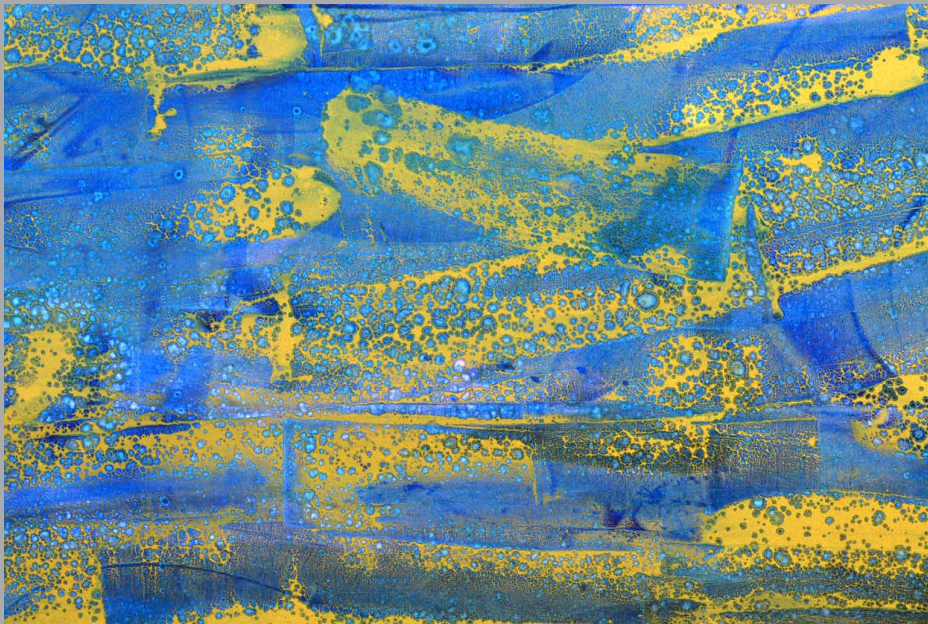


EARTHY HUES





EARTHY HUES

Earthy Hues is an exhibition that shall showcase the artworks of 2 of eminent artists - G Reghu and Anki Bhutia. While G Reghu is a prolific sculptor, Anki Bhutia is known for her nature inspired paintings.

Sculpture for G. Reghu is the embodiment of an idea, a metaphor beyond the physicality of the form itself. Not limited by scale or material, his generic 'heads series' in bronze and ceramic are seemingly simple, sublime and sensitive and are monumental in their expressive contours. They, nevertheless, hold deep cultural connections and memories and speak to the human spirit.

The earthly charm and innocence in his depiction are like a soothing balm to us today. The everydayness of his figures, specially heads, appeal to the viewers and make them feel and introspect. The earthly feel, smile on our lips, kindling charm in our eyes and contemplation lead us to our rural rustic roots where the smell of clay and purity of life are predominant. Often discussed as having deep resonances with Brancusi and Himmat Shah, Reghu's 'Heads' are ultimately steeped in the contours of the Indian landscape. Majestic in their bearing, classical in line and form, they reflect the glowing skin and radiant expression of 'sentient beings' becoming creations of the pure, undiluted human spirit.

His figures immediately recall the simplicity of central India's powerful terracotta votive figures. Without using textures or glaze, Reghu allows the clay to narrate an entire story of a life and its emotional memories that are summed up in his sparse compositions of human figures and objects that reveal a gamut of human energy and emotion. Reghu shows process through traces of the artist's hand, fired into permanence through the medium of his kiln. He treats the body between space and time - as the intermediary between the immaterial and material world. The vitality of Reghu's work lies in how perception creates space and meaning and formulates reality.

Anki Bhutia's Sikkimese roots have imparted all her work with a distinctive meditative quality. Radiating her characteristic childlike innocence Anki says that through her journey across the nation, she remains the girl from the farm back in Sikkim. Well, this talented girl from Sikkim is also the Director of Karma Lakelands, a company developing responsible communities, and just concluded a very successful exhibition of her paintings at Delhi's Triveni Kala Sangam.

The abstract works of artist Anki Bhutia speak in a vocabulary of the inner being within all of us. Visually, they suggest vast expanses and spiritual dimensions expressed through a frenzied riot of colours. We bring to you an exclusive look at the collection of works by Anki Bhutia, titled The Alchemy of Transformation.

The exhibition shall display unseen works of both artist and aims to be a visual treat for art collectors and art enthusiasts alike.



One O Eight Art Projects has been founded as a new avenue for art ecosystem with a vision to be more open & inclusive towards the approach on bringing art and experiences together across timelines, practices and regions. The project aims to nurture the exchange of ideas and experiences through impactful projects and curations working with artists / groups / collectives / art professionals / galleries and institutions.

One O Eight Art Projects has been founded by Tarun Khanna who has adorned various hats as a collector, art advisor, information and environment design expert and an art dealer. With over 20 years of experience in collecting and advising and contributed towards building various important art collections across the world the birth of **One O Eight Art Projects** seemed an appropriate next step to bridge the gaps in the art ecosystem towards being more transparent and inclusive for all.

Moving forward the project will focus on commercial and non-commercial aspects of art like research, publications, grants, fellowships and residency projects for South Asian and International art. The project is already in process to set up a collective ownership-funding model for South Asian Art based on deep research and data that has been collected over years of operating in the market. With this unique concept for the Indian art market, project will also be exploring the growing trends of digital and AI art space which is making a great buzz internationally.



Art Magnum was founded with a vision to provide South Asian Art a platform to showcase its true ability and magnificence and to support upcoming and established artist and craftsmen. Since its inception in 1986, it has been nurturing emerging artist to further the cause of South Asian Art. It's founder Late Shri Prakash Chand Singhvi was a visionary figure whose passion and enthusiasm was the driving force behind the gallery.

Art Magnum's current director, Saurabh Singhvi, is taking his legacy forward. The gallery has prided itself to present different medium of artistic expression ranging from the traditional to the modern to the contemporary to the experimental. A contemporary space with a modern tone located in the heart of South Delhi, the gallery attempts to give voice to the emerging talent of the day balanced with a roster of shows that presents the Masters of India Art through the pre and post-independence era.

Always innovative and always striving towards new paradigms, Art Magnum has, in its journey, reached many milestones and many goals. The firm has held shows in countries such as Dubai and Singapore for which it has won critical and popular acclaim both within India and internationally. The collection of the gallery includes works of M F Husain, S H Raza, F N Souza, Somnath Hore, Suhas Roy, K G Subramanyan, Paresh Maity, T Vaikuntam amongst others. Going forward, Art Magnum shall act as a catalyst for talented young artist striving for creative excellence.



ANKI BHUTIA

Praised by the likes of legendary E. Alkazi, her works have consciously digressed from the idea of making a perfect picture frame. They evolve from a monastic discipline as practised in Buddhism. Imagination intensifies her perception of the nature transforming every object of her painting into a living being.

Originally from Sikkim, Anki grew up in the pristine lap of nature. It was when she moved to Delhi for higher studies that she really realised the richness and wisdom of her inheritance, something she had so far taken for granted. It is this realisation that is often reflected in her work.

Her brush strokes have a gripping appeal and the canvas spaces are delegated into slots of colour, much like a prism held up to a light within. That she was born surrounded by the scintillating landscape of Rumtek in the Himalayas is no simple coincidence.

The textures arising from her tonal applications trace the journey of a pilgrim on the path to self-discovery, where every landmark by the wayside is ticked off with a hue of light and life, making the painting an interesting tracery, actualising one's personal journey through life.



ANKI BHUTIA
Quiet hours turning to years
Acrylic on canvas
84" x 48"
2006



ANKI BHUTIA
Aparition of deja vu
Acrylic on canvas
120 x 72 inches
2006



ANKI BHUTIA
Colliding secret world
Acrylic on canvas
120 x 54 inches
2007



ANKI BHUTIA
The face behind the face
Acrylic on canvas
120 x 54 inches
2008



ANKI BHUTIA

Scape above the blue surface
Acrylic on canvas
120 x 51 inches
2003

ANKI BHUTIA
Symphony of nature
Acrylic on canvas
72 x 48 inches
2004



ANKI BHUTIA
The rigorous test
Acrylic on canvas
120 x 54 inches
2007

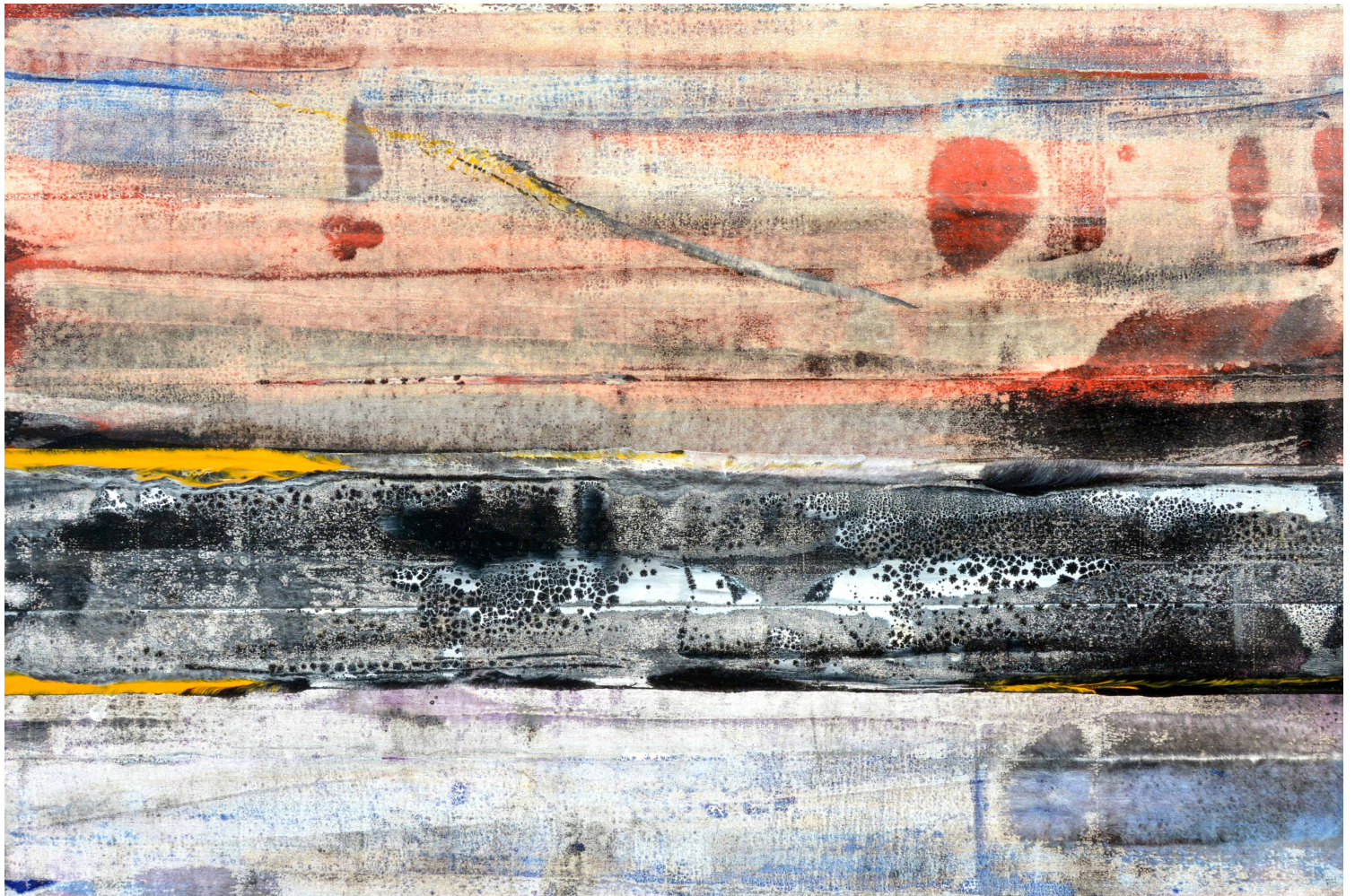




ANKI BHUTIA
Near the purple world
Acrylic on canvas
120 x 54 inches
2008



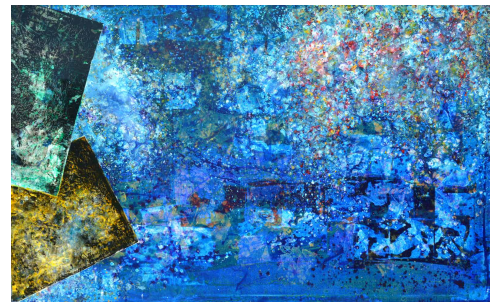
ANKI BHUTIA
Many skies
Acrylic on canvas
96 x 60 inches
2010



ANKI BHUTIA
Deja Vu
Acrylic on canvas
120 x 51 inches
2007



ANKI BHUTIA
Galactic matrix
Acrylic on canvas
96 x 60 inches
2010



ANKI BHUTIA
The broken wave of thoughts
Acrylic on canvas
96 x 66 inches
2007



ANKI BHUTIA
Controlled accident
Acrylic on canvas
96 x 69 inches
2007



ANKI BHUTIA
Evidence of emergent behaviour
Acrylic on canvas
120 x 72 inches
2006



ANKI BHUTIA
My black and white inscape
Acrylic on canvas
96 x 72 inches
2007

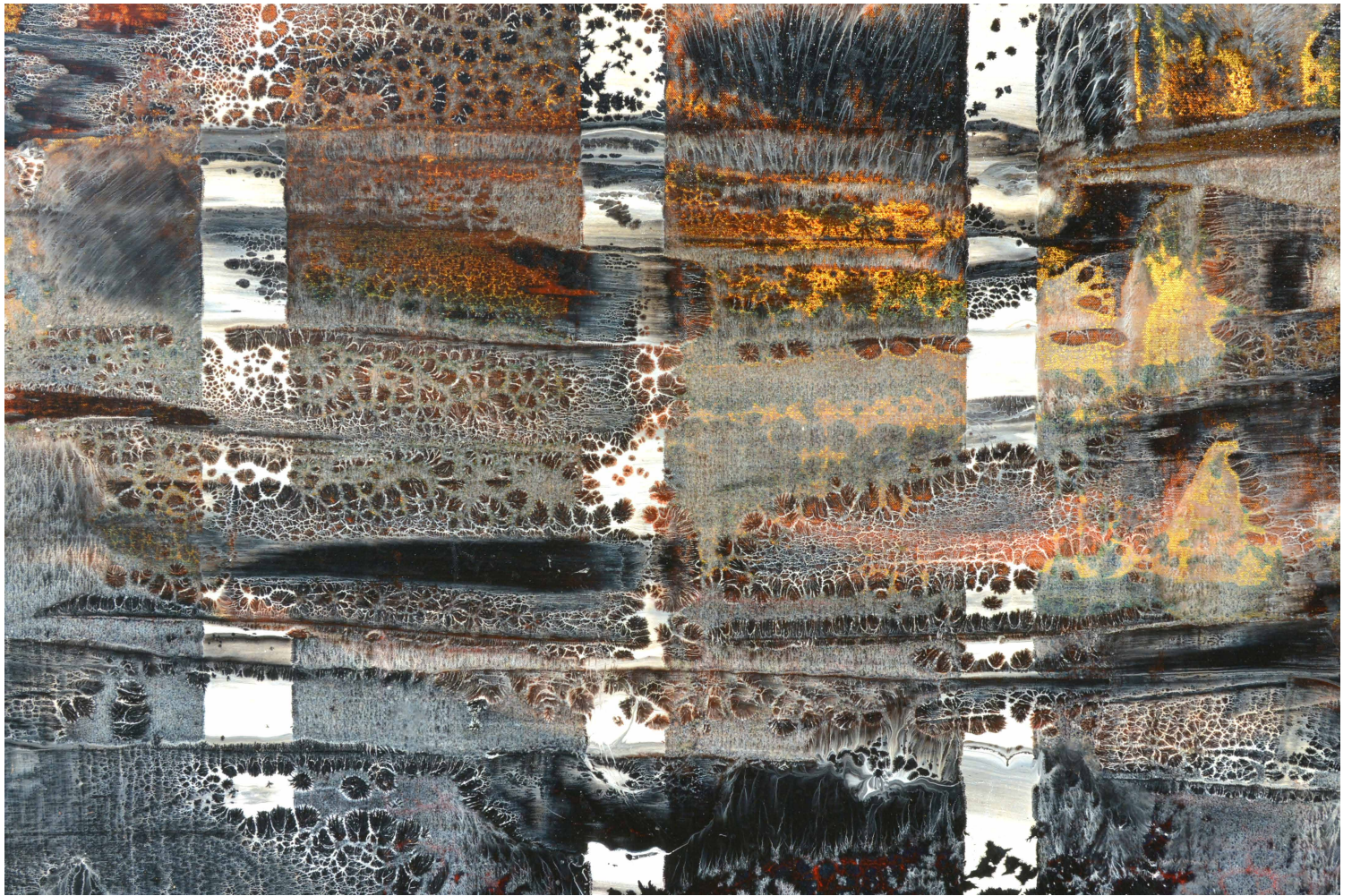


ANKI BHUTIA
Dark is shining afar
Acrylic on canvas
96 x 72 inches
2007

ANKI BHUTIA
Untitled
Acrylic on canvas
84 x 48 inches
2006

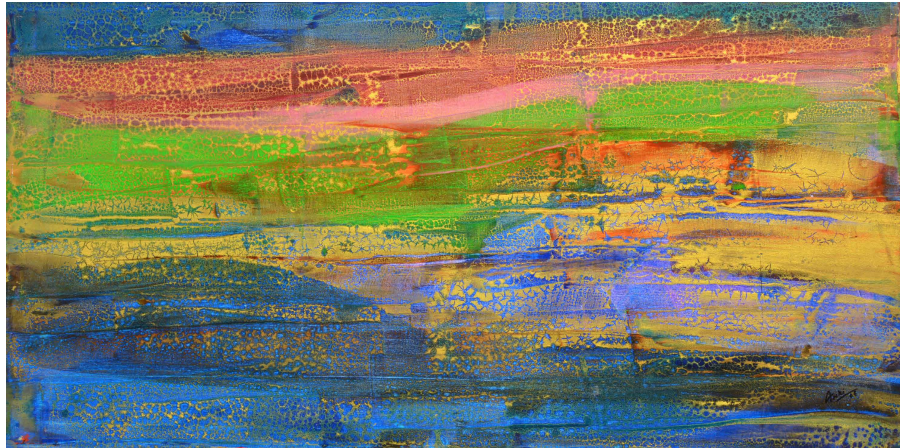


ANKI BHUTIA
Untitled
Acrylic on canvas
48 x 36 inches
2004





ANKI BHUTIA
Between light and darkness
Acrylic on canvas
40 x 30 inches
2008



ANKI BHUTIA
Harmony in discord
Acrylic on canvas
72 x 36 inches
2006

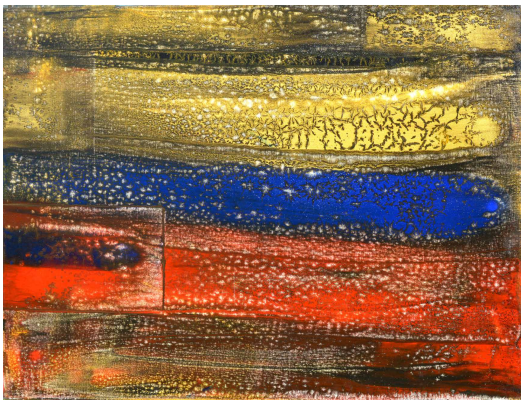
ANKI BHUTIA
Sphere beneath the water
Acrylic on canvas
120 x 60 inches
2008



ANKI BHUTIA
Trust
Acrylic on canvas
120 x 60 inches
2007



ANKI BHUTIA
Like the earth in the arms of sun
Acrylic on canvas
120 x 72 inches
2004



ANKI BHUTIA
Energy forms
Acrylic on canvas
40 x 30 inches
2008

ANKI BHUTIA
Redscape
Acrylic on canvas
60 x 48 inches
2006





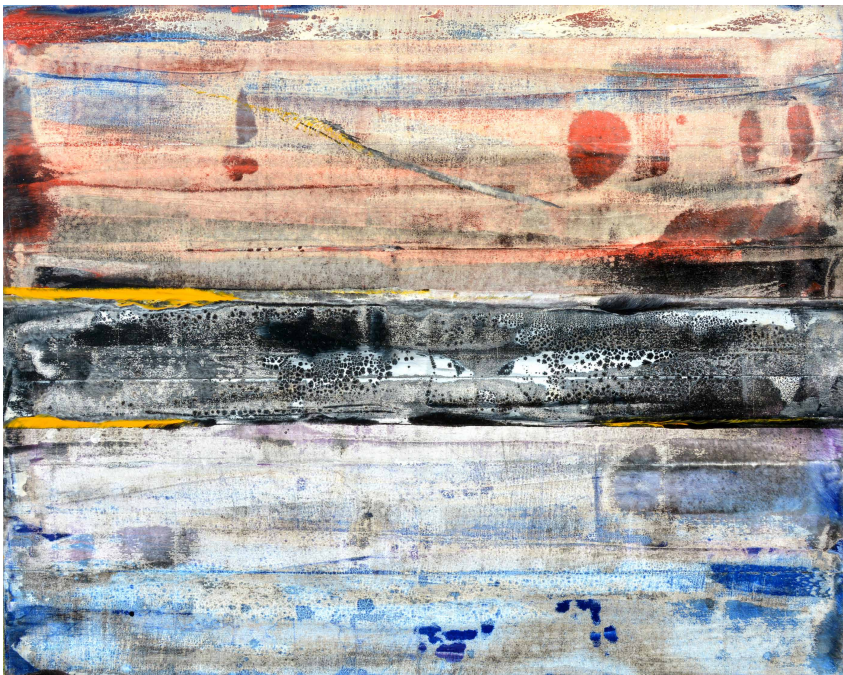
ANKI BHUTIA
Contract with nature
Acrylic on canvas
120 x 51 inches
2007



ANKI BHUTIA
Polarities of coexistences
Acrylic on canvas
60 x 48 inches
2006

ANKI BHUTIA
Flowing ground
Acrylic on canvas
60 x 48 inches
2005

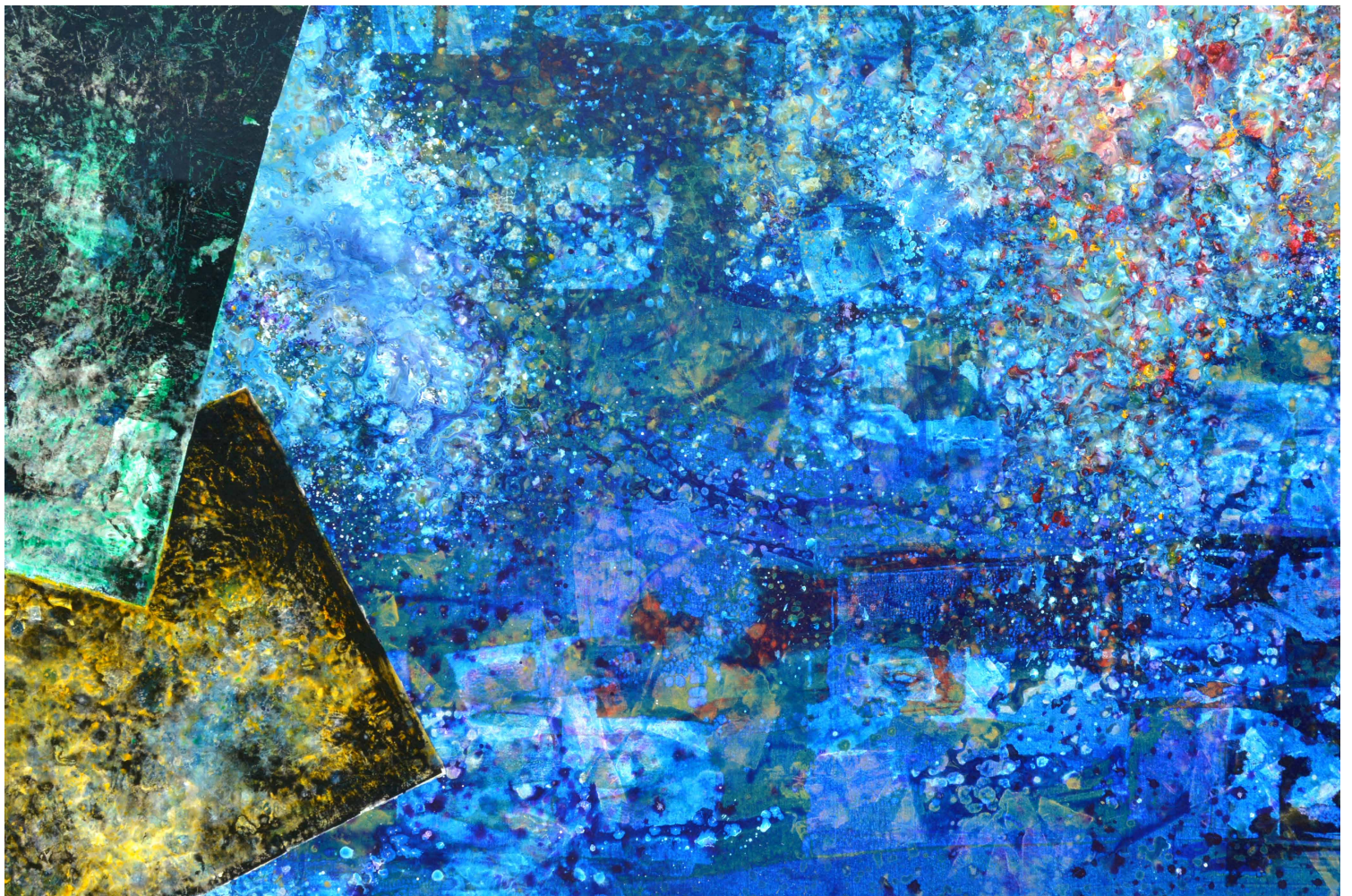


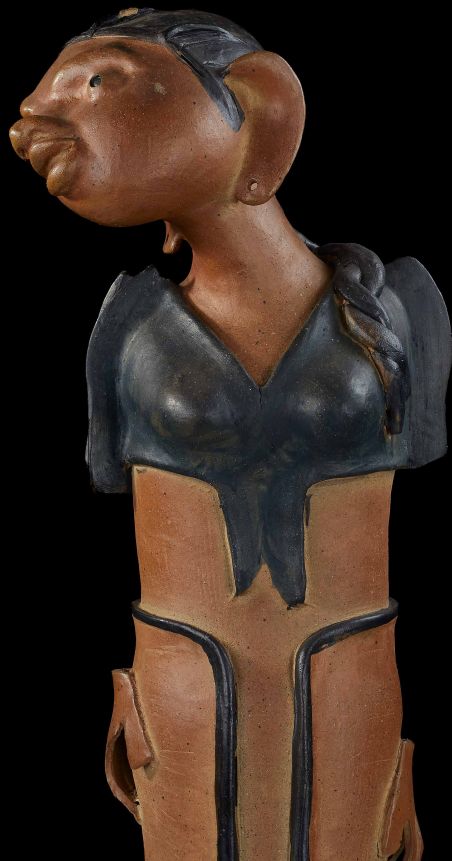


ANKI BHUTIA
Imprint of time
Acrylic on canvas
60 x 48 inches
2006



ANKI BHUTIA
Amorphous form
Acrylic on canvas
60 x 48 inches
2007

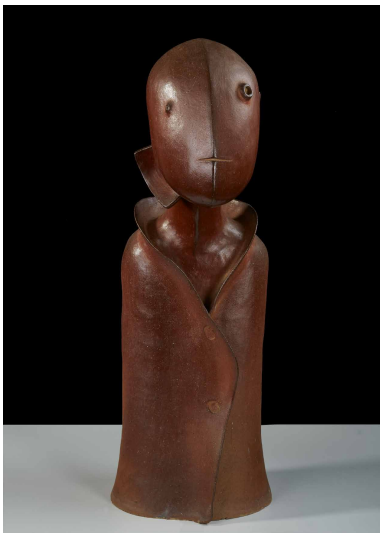




G REGHU

Reghu was born in 1959 in Kilimanoor, Kerala. He studied sculpture at the College of Fine Arts, Thiruvananthapuram. Though he began with stone as a medium, his sensibility gained direction after interacting with Elizabeth and Laurie Baker. Their Gandhian philosophy of working with indigenous materials influenced him greatly. He shunned expensive materials like marble or bronze in favour of humble terracotta. Another huge influence in his life was J. Swaminathan. As a final year student, Reghu participated in an All India Students' Camp organized by the Roopankar Museum of Fine Arts at Bharat Bhavan, Bhopal. Swaminathan who was the Director at that time spotted Reghu's talent and awarded him a scholarship for two years to work there.

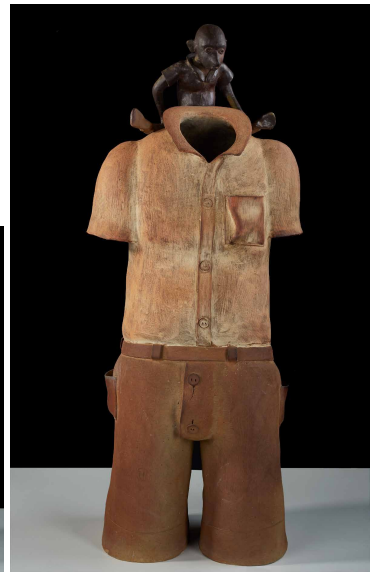
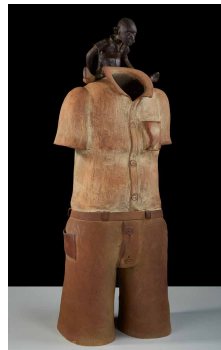
Reghu remained at Bharat Bhavan for 15 years, where he shifted to ceramic and terracotta art. Swaminathan in his persona of a 'tribal' artist, voiced the cause of the dispossessed, and this further inspired Reghu's works. Although Reghu was traditionally a potter, he abandoned pottery and turned to ceramic sculpture. This journey in form from "the pot to the head" is marked by a certain fluidity. The convex curves of the pot now assume the contours of the head and the inanimate and utilitarian object is fused with spirit of a living image. He showed an intimacy using the tactile processes of modeling with clay and using the potter's wheel. The medium and method reflected his familiarity with a rural lifestyle. Using the processes of hollow-modeling, slabbing, folding, coiling and pinching, Reghu began to evolve a racial type that mingled Dravidian and African facial features - bulging eyes, thick lips, and cabbage ears mingle both Dravidian and African facial features, evocative of an ancient civilization. Thereby transcending his well-defined local images to convey a world of magic, myth, and bucolic innocence. From here, he moved to his present preoccupation, an exploration of the human form.



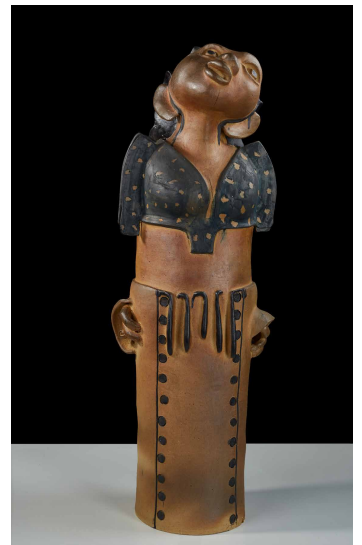
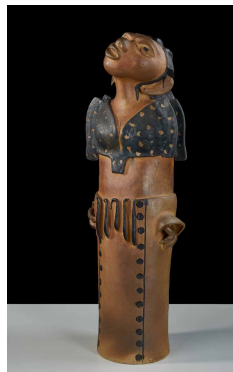
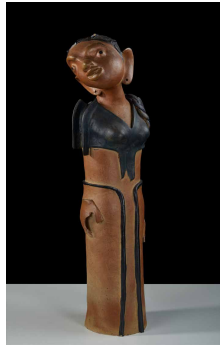
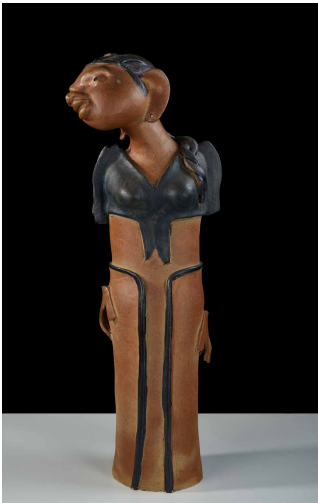
G REGHU
Untitled
Ceramic
20 x 14 x 38 inches
2012



G REGHU
Untitled
Ceramic
22 x 12 x 52 inches
2012



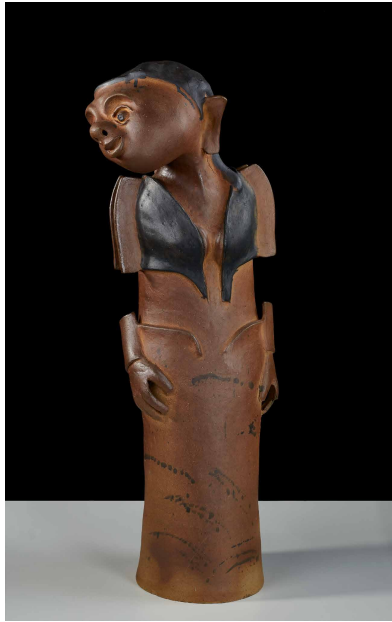
G REGHU
Untitled
Ceramic
16 x 12 x 44 inches
2019



G REGHU
Untitled
Ceramic
16 x 12 x 44 inches
2019

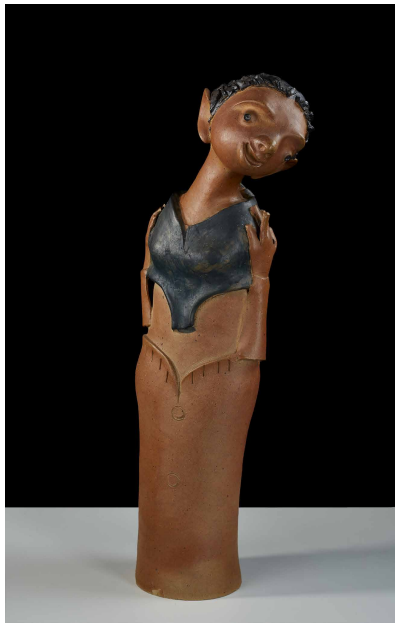


54

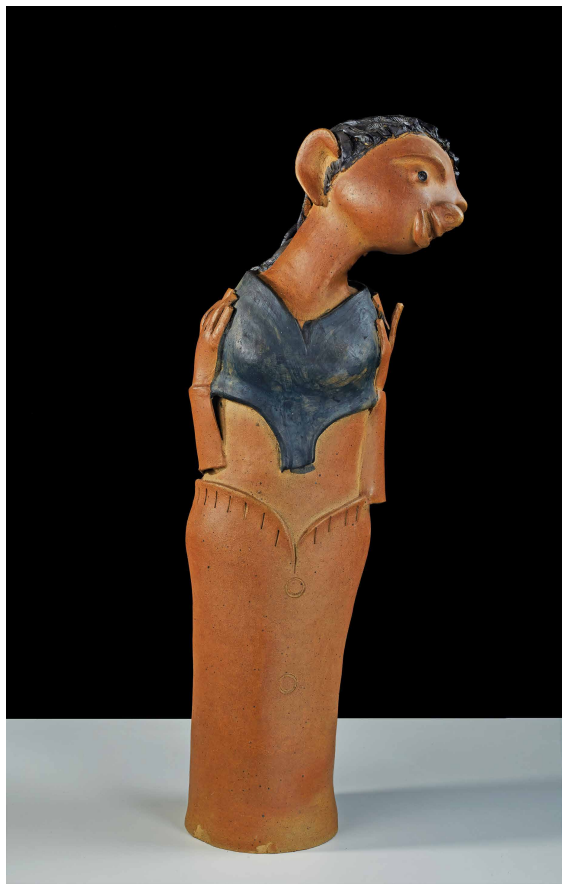


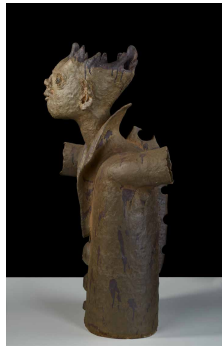
G REGHU
Untitled
Ceramic
16 x 12 x 44 inches
2019

55



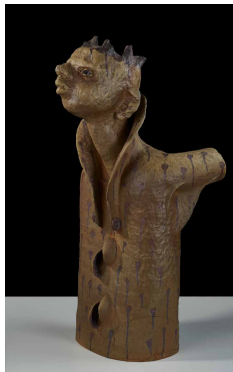
G REGHU
Untitled
Ceramic
16 x 12 x 44 inches
2019



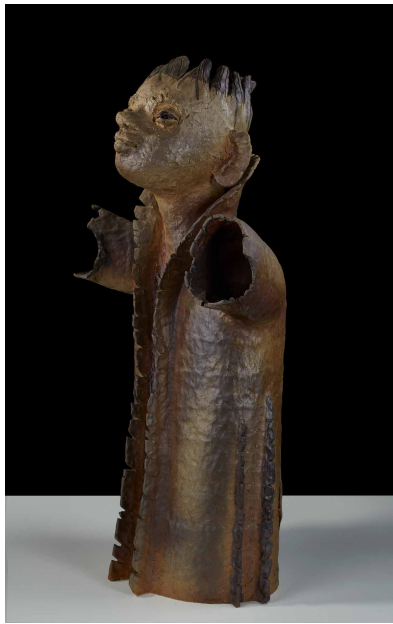


G REGHU
Untitled
Ceramic
24 x 20 x 40 inches
2017

G REGHU
Untitled
Ceramic
24 x 20 x 40 inches
2017

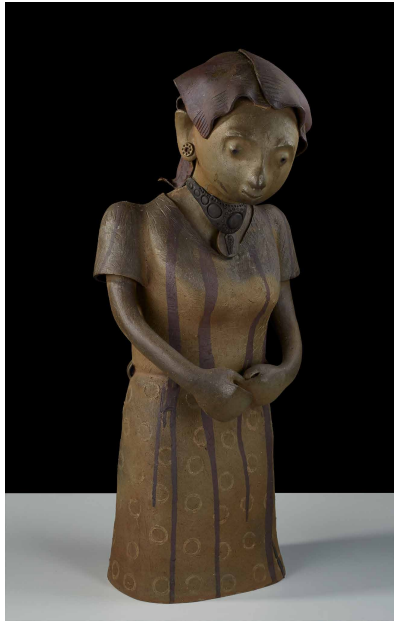




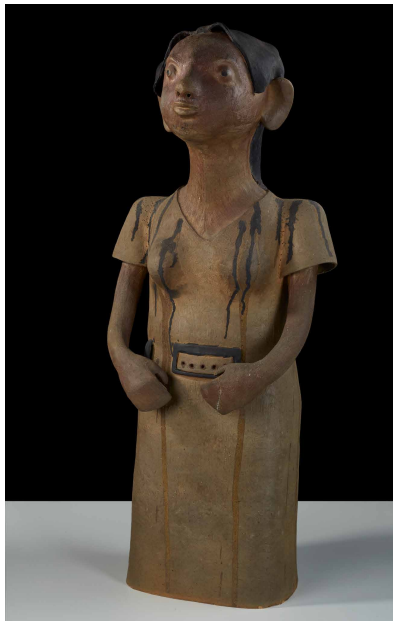


G REGHU
Untitled
Ceramic
24 x 20 x 40 inches
2017

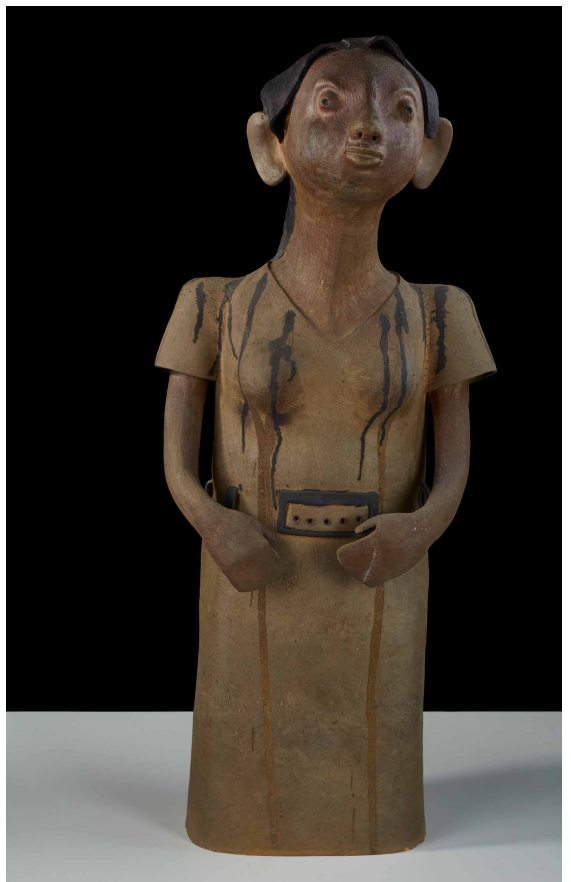


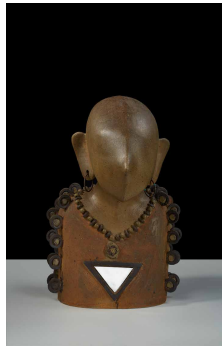
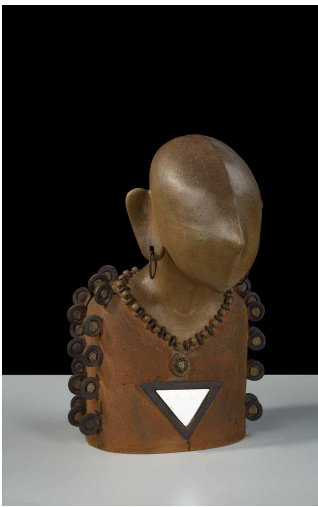


G REGHU
Untitled
Ceramic
20 x 16 x 42 inches
2017

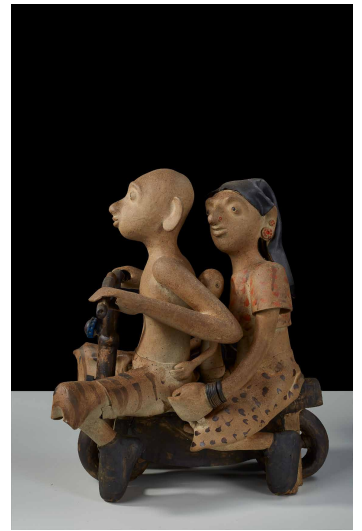
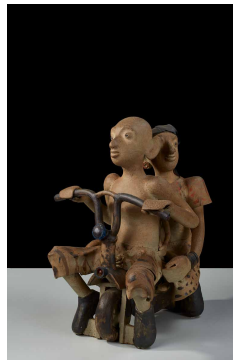


G REGHU
Untitled
Ceramic
18 x 14 x 44 inches
2015





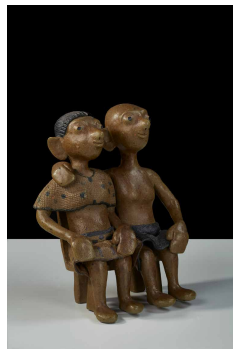
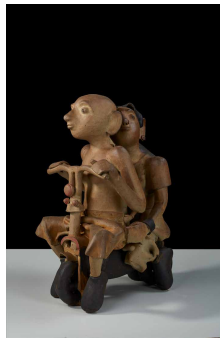
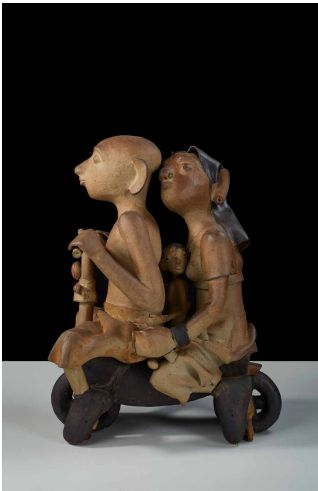
G REGHU
Untitled
Ceramic
20 x 18 x 26 inches
2015



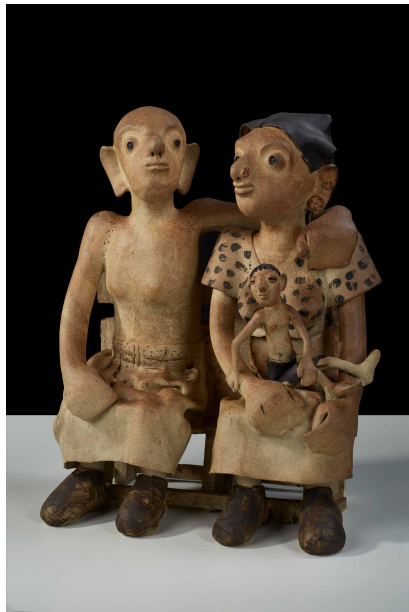
G REGHU
Untitled
Ceramic
22 x 18 x 24 inches
2019



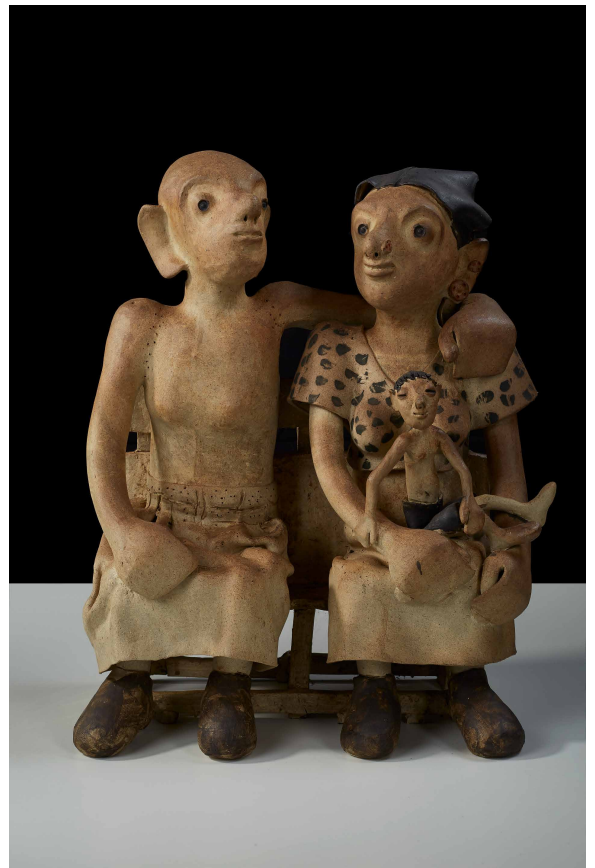
G REGHU
Untitled
Ceramic
22 x 18 x 28 inches
2019



G REGHU
Untitled
Ceramic
16 x 8 x 18 inches
2021

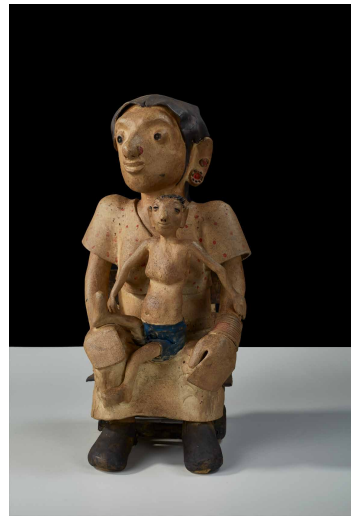
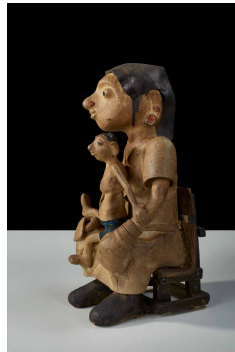
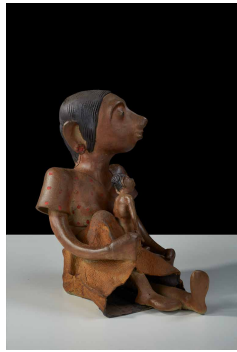


G REGHU
Untitled
Ceramic
28 x 10 x 24 inches
2021



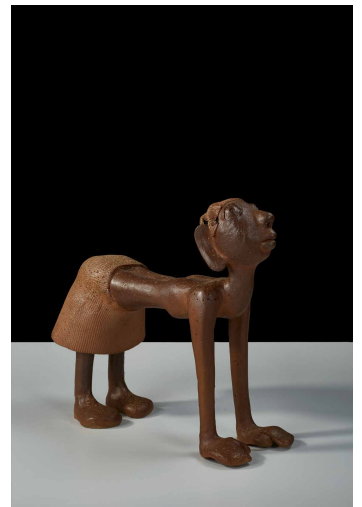
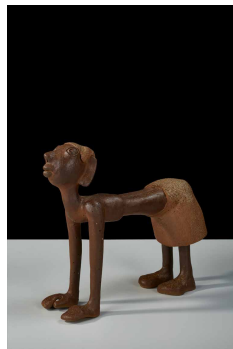
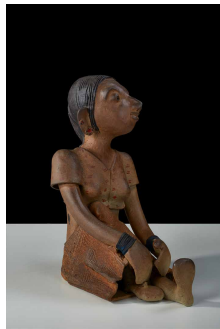
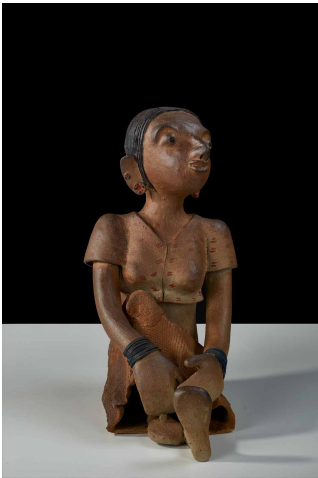


G REGHU
Untitled
Ceramic
14 x 16 x 20 inches
2021



G REGHU
Untitled
Ceramic
14 x 12 x 24 inches
2021

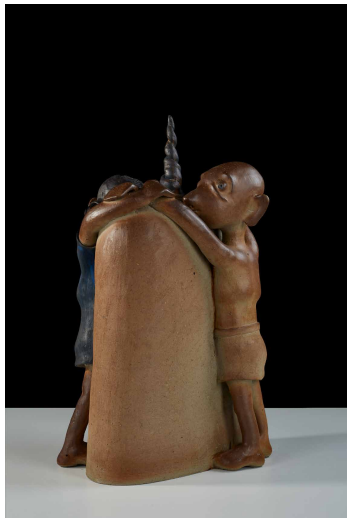
G REGHU
Untitled
Ceramic
14 x 16 x 20 inches
2021



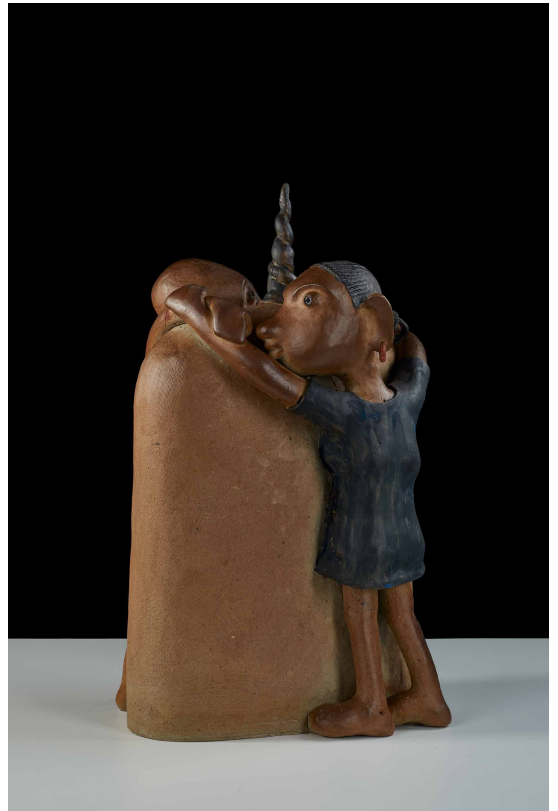
G REGHU
Untitled
Ceramic
8 x 18 x 16 inches
2021



G REGHU
Untitled
Ceramic
14 x 16 x 24 inches
2021

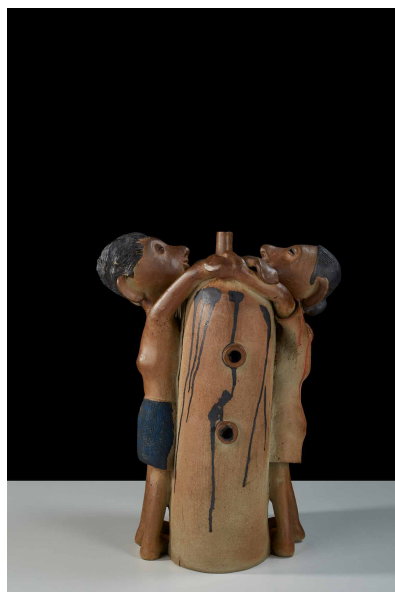


G REGHU
Untitled
Ceramic
14 x 16 x 26 inches
2021

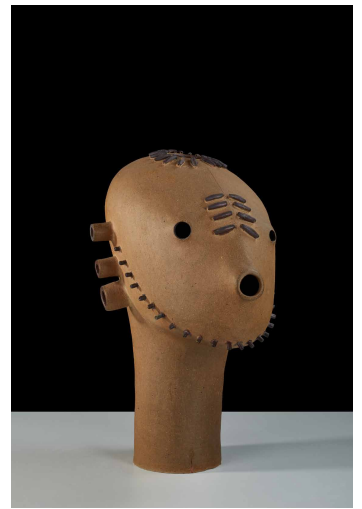
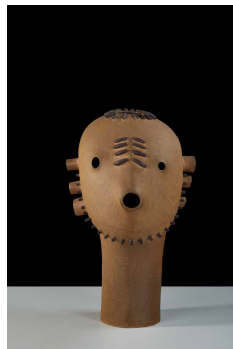
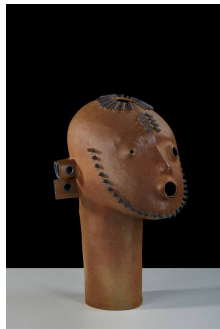
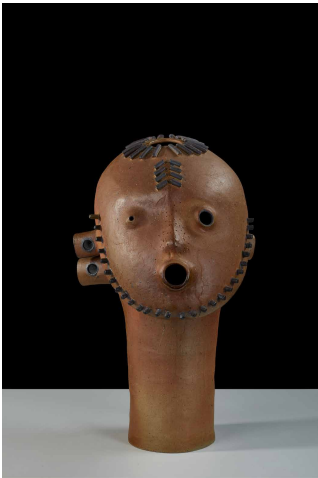




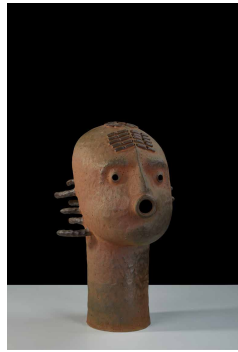
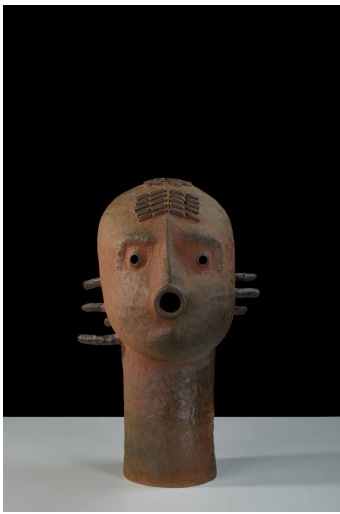
G REGHU
Untitled
Ceramic
14 x 16 x 24 inches
2021



G REGHU
Untitled
Ceramic
18 x 16 x 28 inches
2017

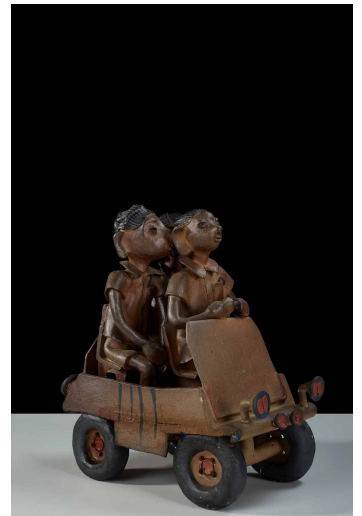
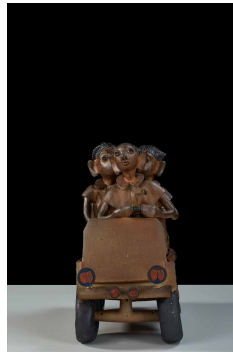


G REGHU
Untitled
Ceramic
18 x 16 x 30 inches
2017



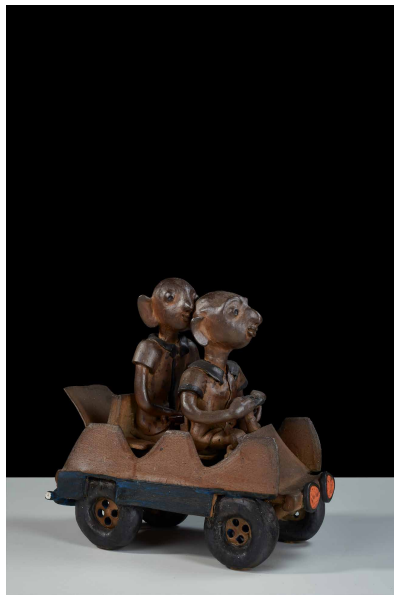
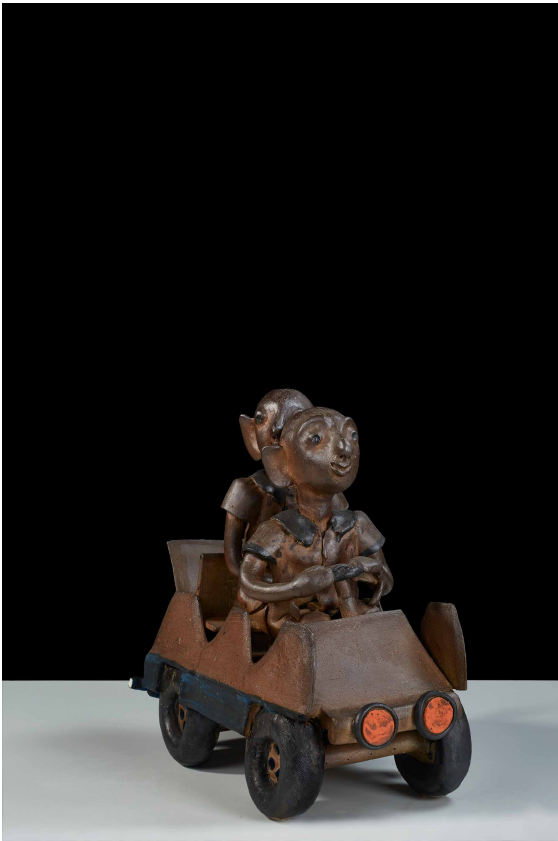
G REGHU
Untitled
Ceramic
16 x 16 x 26 inches
2017

G REGHU
Untitled
Ceramic
10 x 20 x 18 inches
2017



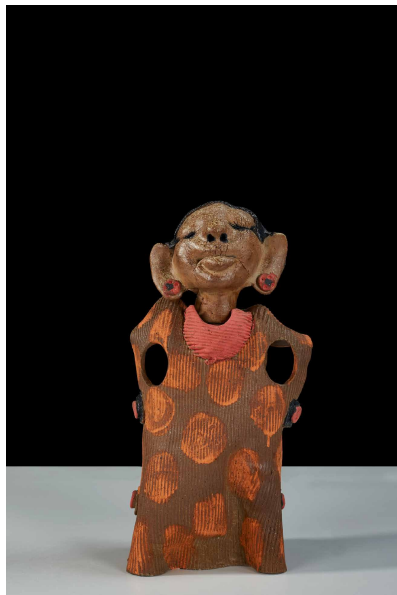


G REGHU
Untitled
Ceramic
12 to 15 inches Height (Variable sizes)
2021

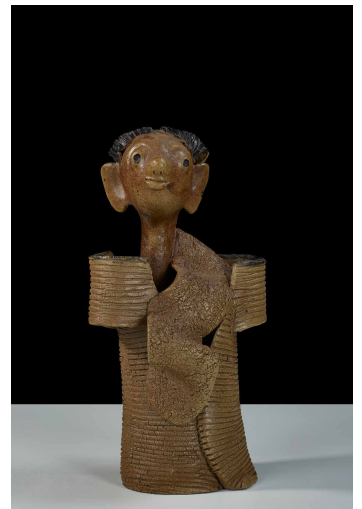
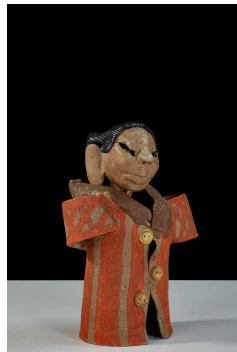
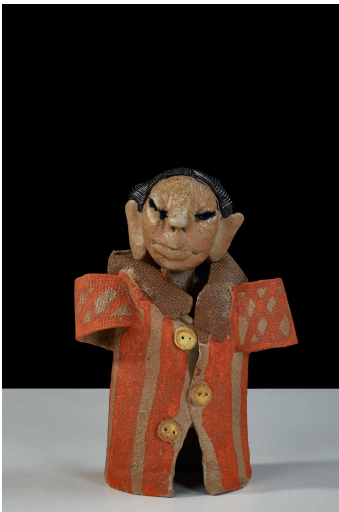


G REGHU
Untitled
Ceramic
8 x 16 x 6 inches
2017

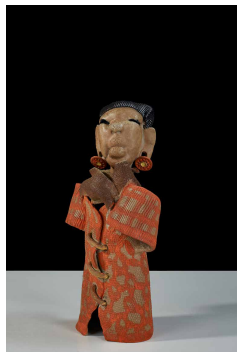
G REGHU
Untitled
Ceramic
10 x 8 x 18 inches
2020



G REGHU
Untitled
Ceramic
10 x 8 x 16 inches
2020

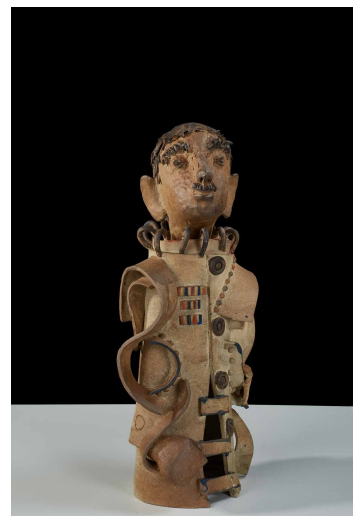
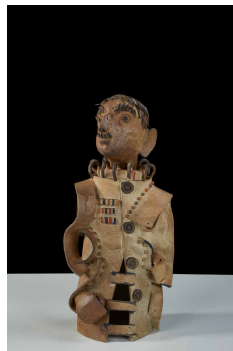


G REGHU
Untitled
Ceramic
10 x 8 x 18 inches
2018



G REGHU
Untitled
Ceramic
10 x 8 x 18 inches
2020

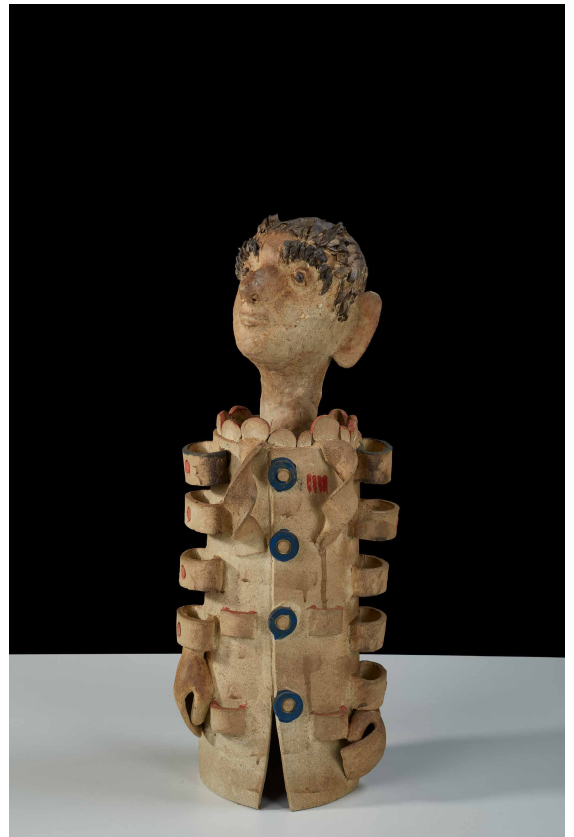
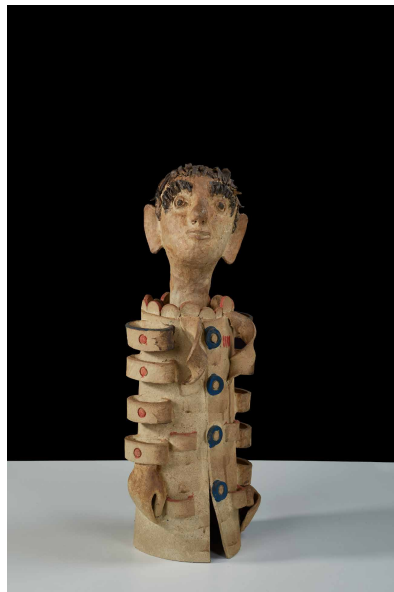
G REGHU
Untitled
Ceramic
10 x 11 x 20 inches
2022



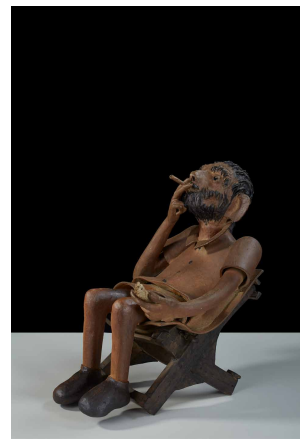
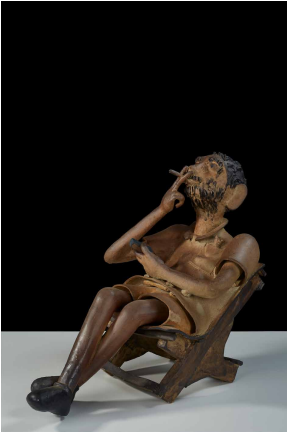
G REGHU
Untitled
Ceramic
6 x 4 x 10 inches
2021



G REGHU
Untitled
Ceramic
10 x 11 x 20 inches
2022



G REGHU
Untitled
Ceramic
14 x 14 x 26 inches
2022



G REGHU
Untitled
Ceramic
14 x 14 x 26 inches
2022



G REGHU
Untitled
Ceramic
18 x 8 x 6 inches
2019



www.artmagnum.in @art.magnum

www.108artprojects.com @artprojects.108

Pouring Partners:

