



Soulscape

Tawatchai Somkong



ART SG

23—25 Jan 2026
Marina Bay Sands
Singapore

Founding and
Lead Partner



UBS



Soulscape

Tawatchai Somkong

Curator Jyotirmoy Bhattacharya

Co-curator Roma Madan Soni

Fate in God's Hands: Rainbow, Fields, Village

2022

Oil on canvas, 200 x 340 cm



Under the Shade: Time, Unceasing

2022

Oil on canvas, 200 × 340 cm



Utopia: Yellow Scenery

2022

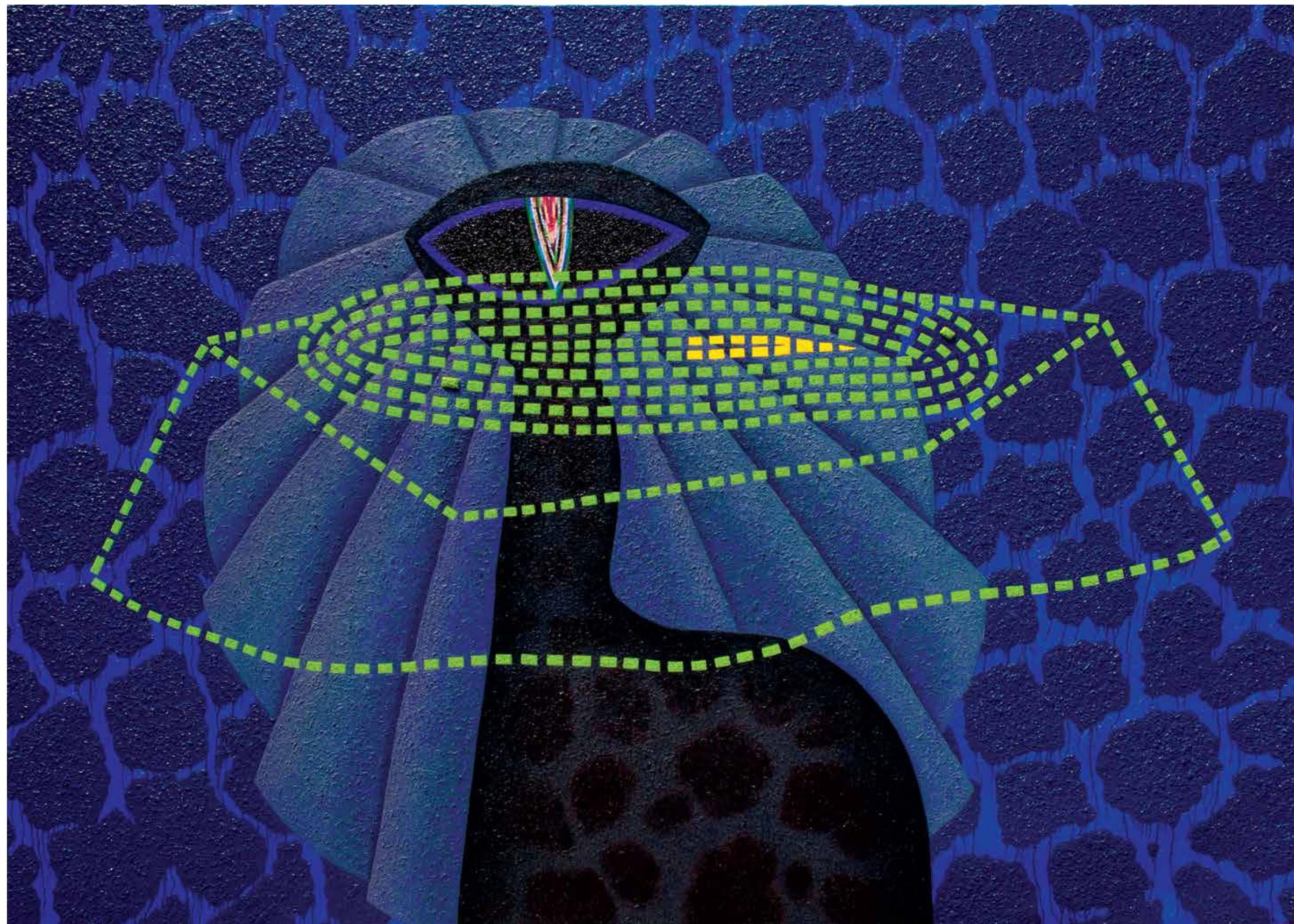
Oil on canvas, 270 x 340 cm



Through Unletting Eyes (Kali & Noah)

2022

Oil on canvas, 270 x 380 cm



Seed

2022

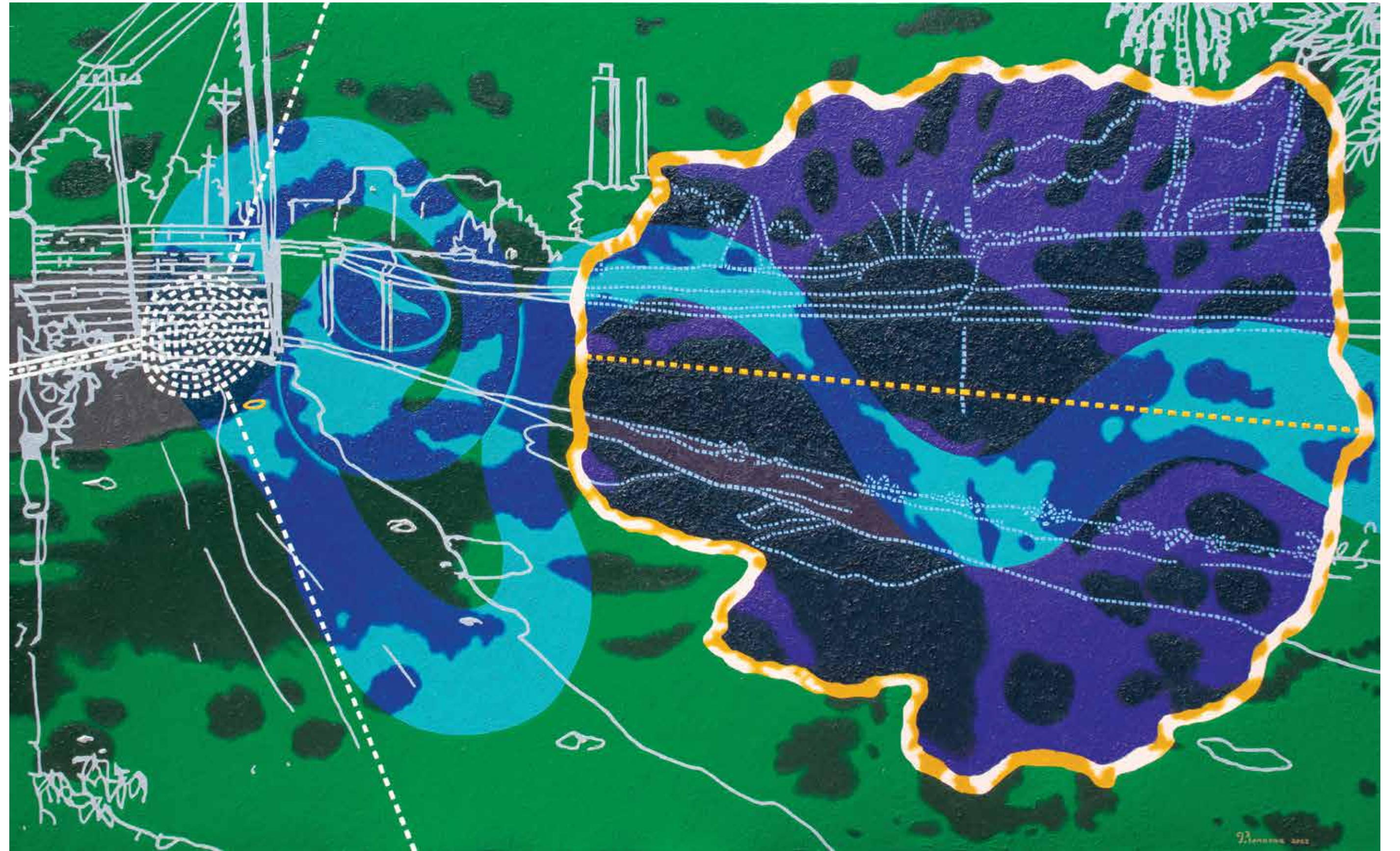
Oil on canvas, 270 x 340 cm

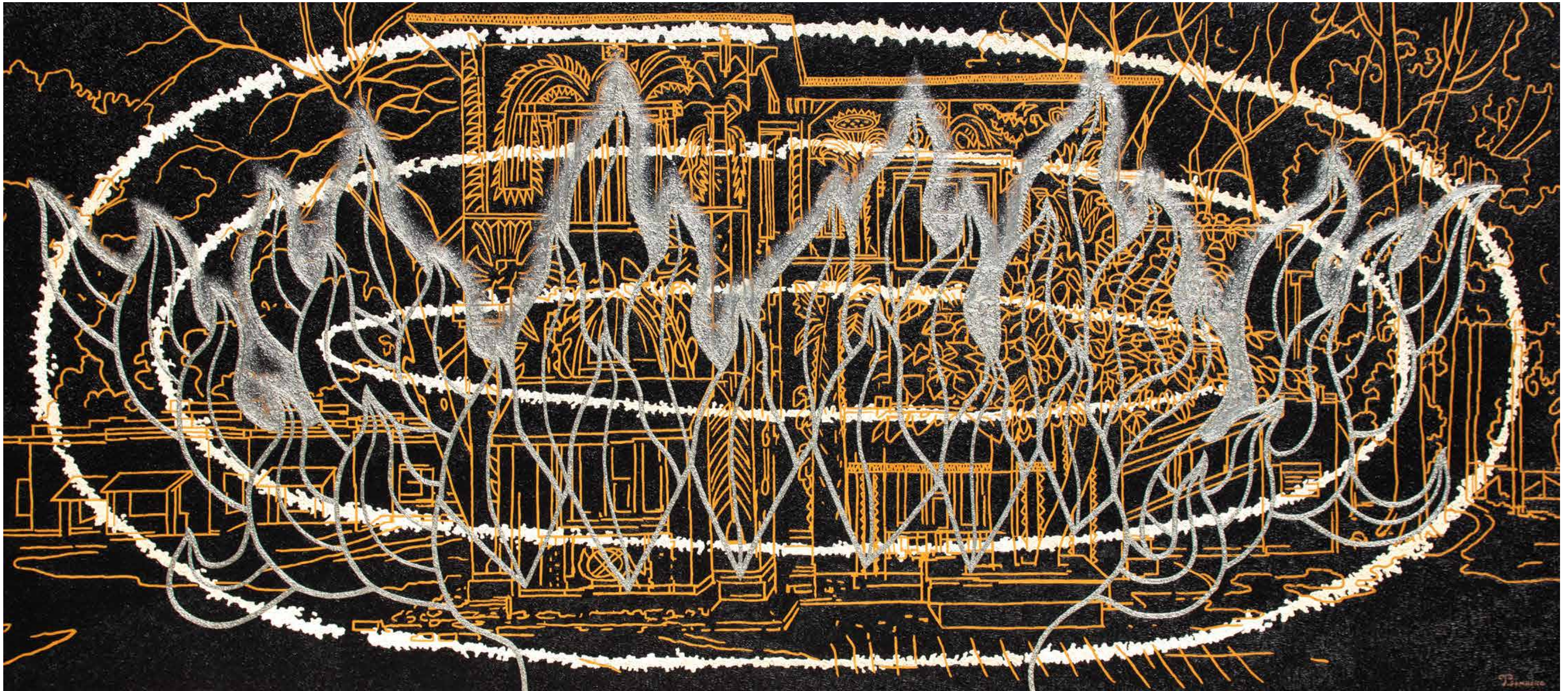


The Path One Must Walk Alone

2022

Oil on canvas, 200 x 320 cm





Awakened Before the Black Building, 2022, Oil on canvas, 200 x 450 cm

An Altar in the Ocean of Contemplation

2022

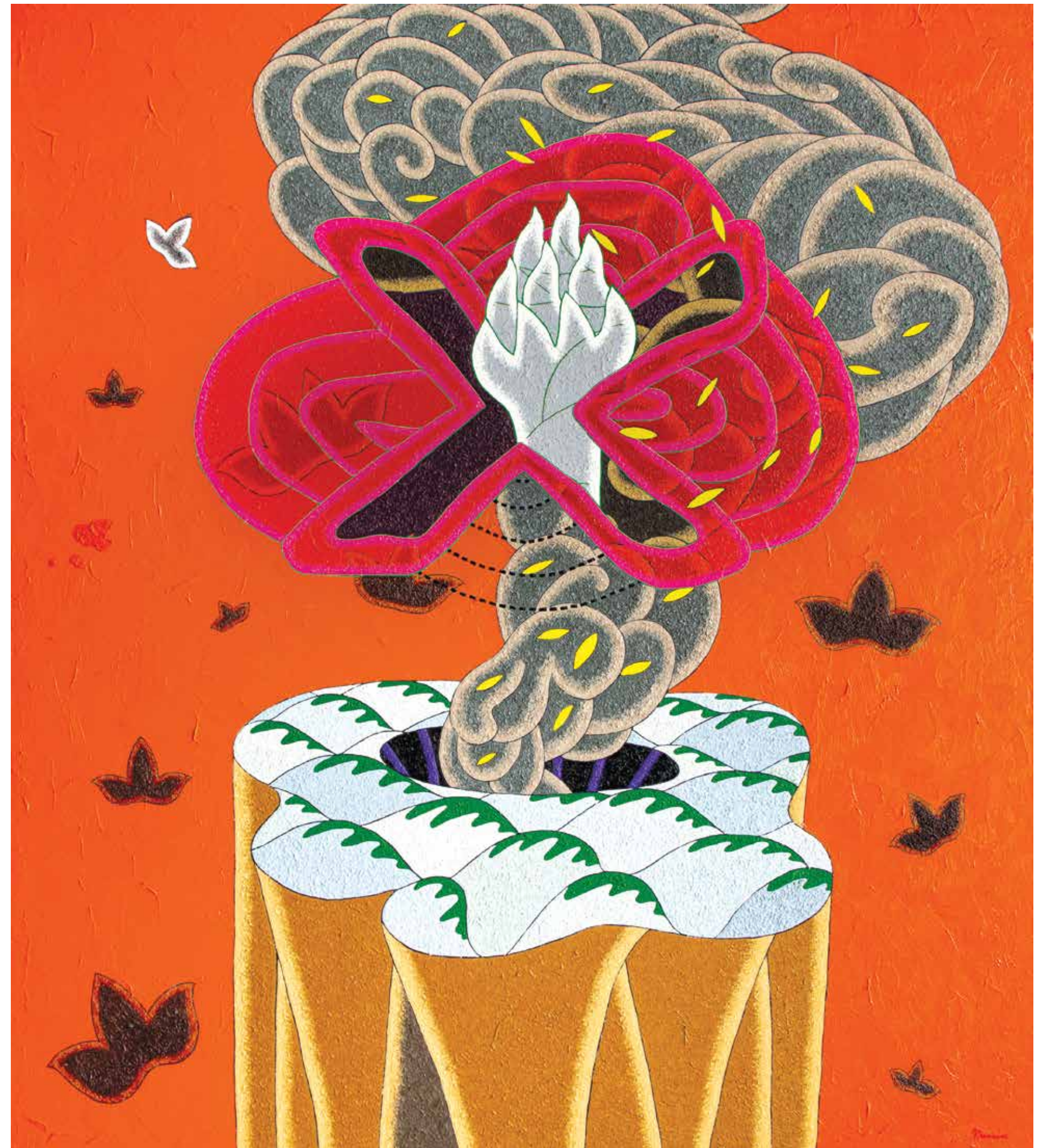
Oil on canvas, 270 x 240 cm



A Continuous Phenomenon

2022

Oil on canvas, 270 × 240 cm



Studio at Kala Bhavana

2022

Oil on canvas, 170 x 180 cm

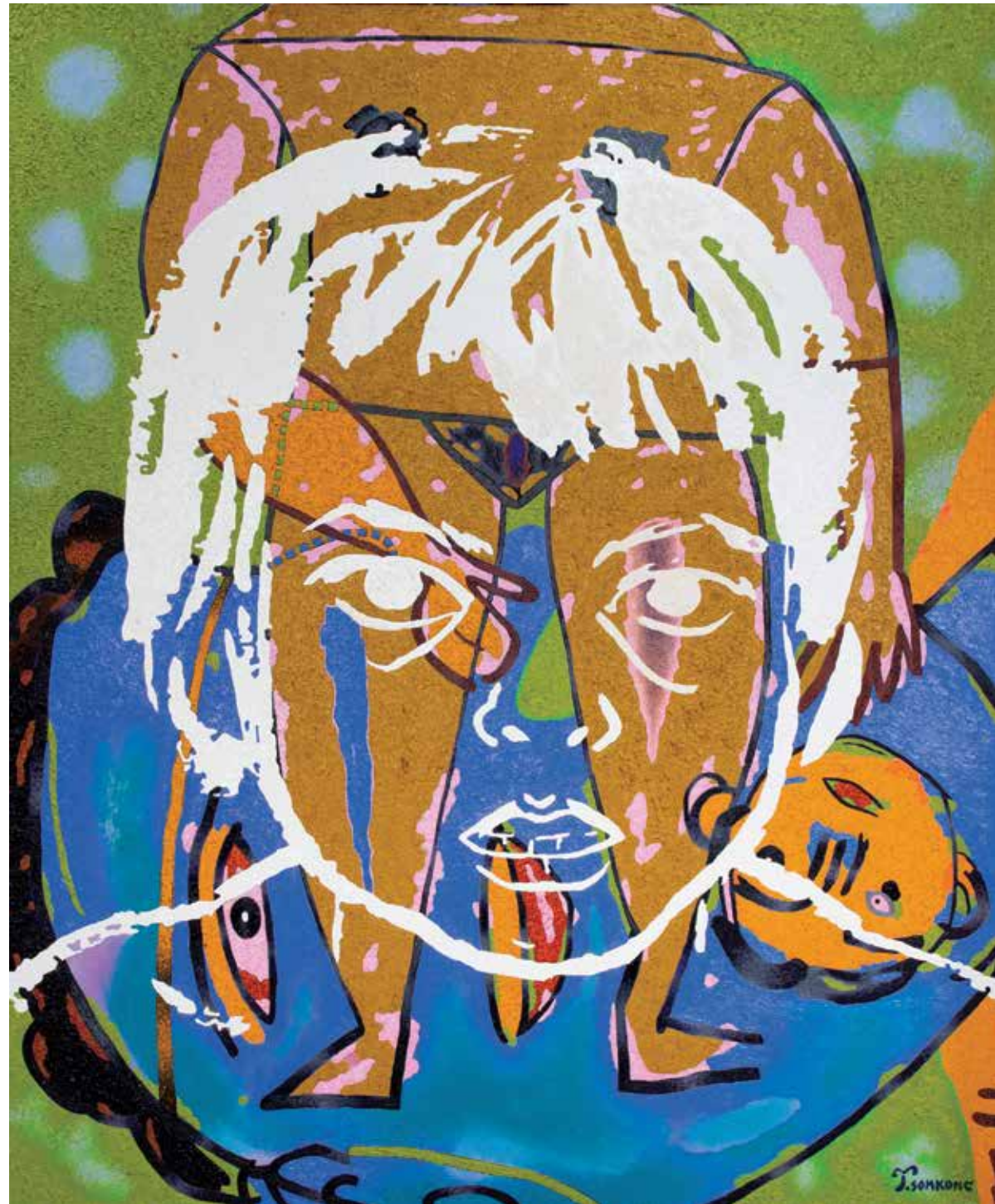


A Night at Deer Park

2022

Oil on canvas, 170 x 230 cm





Jumma Halichandala
2022
Oil on canvas, 170 × 140 cm



Bengali Woman
2022
Oil on canvas, 170 × 140 cm

Mud House and Puppy in a Santhal Village

2022

Oil on canvas, 170 × 200 cm



A Bengali Elder and a Young Japanese Woman

2022

Oil on canvas, 170 × 140 cm



The Day Butterflies Crossed a Sky of Rainbows

2023

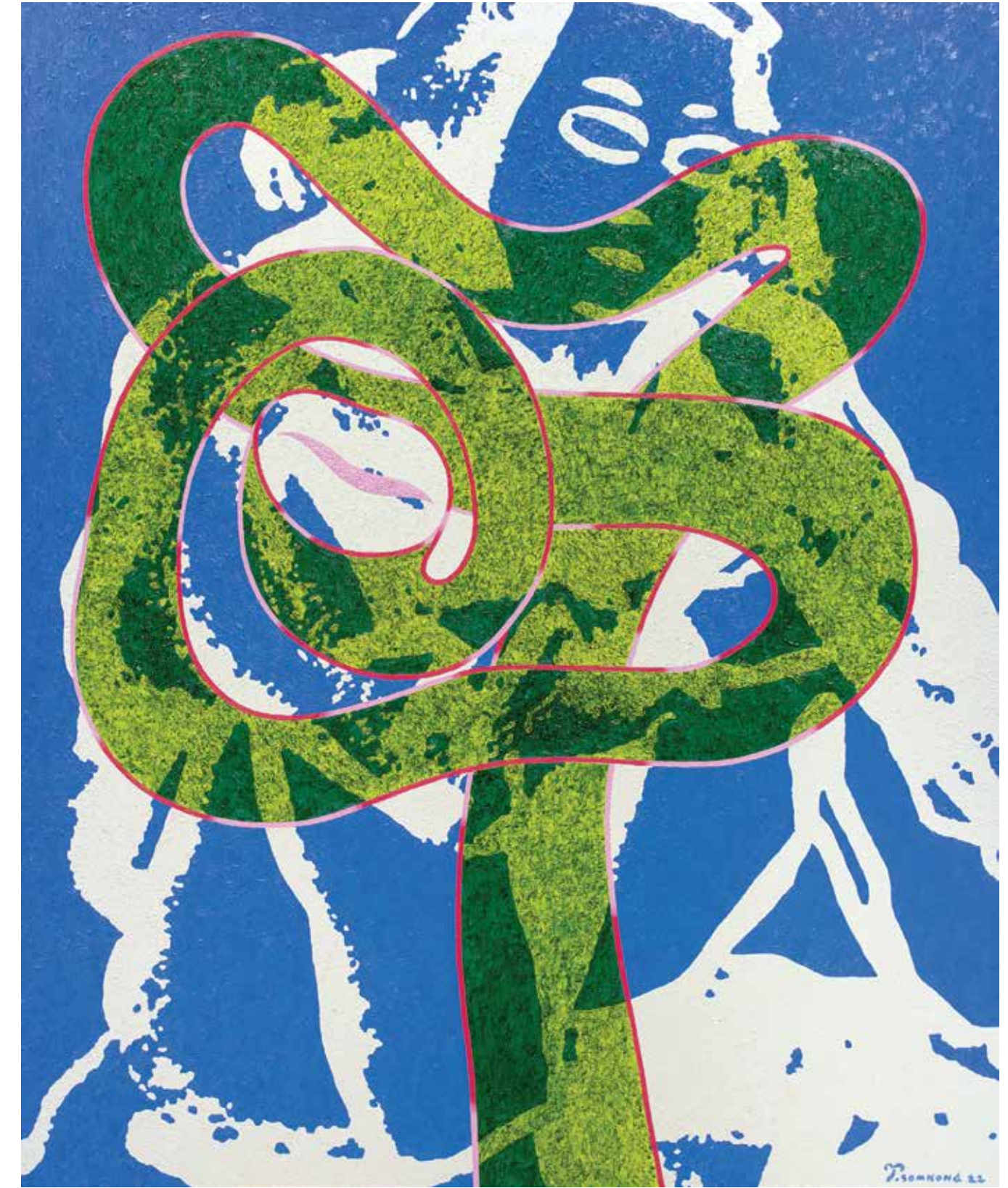
Oil on canvas, 180 × 200 cm





Yellow Puppy

2022
Oil on canvas, 170 × 140 cm



Sitting Still as the World Turns

2022
Oil on canvas, 170 × 140 cm

Sitting Still as the World Turns 2

2022

Oil on canvas, 170 x 140 cm





The series “Soulscape” by Tawatchai Somkong is a journey back to 1992, during the period when he was studying art at Visva-Bharati University, Santiniketan, India, to explore what he encountered and experienced at that time.

Once, while painting a watercolour of a mud house in a rural village, Tawatchai came across a small puppy wandering past. He quickly picked up black ink and sketched it on the drawing paper. This moment made him realise that even as he was deeply absorbed in a single action, the world and everything around him continued to move and unfold with countless stories within their own contexts. Each artwork in this series is therefore composed of at least two images, drawn from sketchbooks, art books, and works created during his time in Santiniketan.

The compositions range from landscapes, architecture, people, and animals, to abstract symbolic forms that reflect a vision of an ideal world where people of different faiths can coexist peacefully. These elements merge and overlap to form a landscape of the artist’s inner world. “Soulscape” thus serves both as a record of memory and as a profound expression of thought from a pivotal moment in his life.



For queries
Saurabh Singhvi
+91 9818003839
studioartmagnum@gmail.com