

Art of Sushma Roy



Art of Suhas Roy

Exhibition :
3rd December, 2023 - 10th January, 2024

Curator
Jyotirmoy Bhattacharya



Art of Suhas Roy

Curator: Jyotirmoy Bhattacharya

Design: Art Alinda, Kolkata

Photograph By: Nepal Bhadra

ART MAGNAM

6C/4, Yusuf Sarai,

Aurobindo Marg,

Inside Indian Oil complex,

New Delhi - 110016

Contact Us: **Sourabh Singhvi**

Phone: 98180 03839

info@artmagnum.in

Curator's Note

Bengal, the Land of Shri Chaitanya Dev, is the origin soil of Bhaktism. This Bhaktism, which has retained its influence over literature, philosophy, and society life of Bengal, has also made its rooted impact in the expressions of art and artists as well. The genius of Poet Jayadeva lies in his portrayal of Radha-Krishna as mortal beings, which has resulted in their love story becoming deeply intertwined with the lives of Bengal. Even today, this school of creation continues to captivate and inspire, bearing witness to the power of art to shape culture. The portrayal of divine idols as human beings is not just limited to literature but also holds significant importance in the realm of art. Since the advent of different periods, the distinguished forms of Radha and Krishna have been portrayed in varied depictions and have become lively with the strokes of various mythological scenes. While the style of miniature painting became more prominent in early Bengali painting, these forms and figures developed into human characters towards the end of the 19th

century. Those implications of Radha Krishna were quite visible in the paintings of Bamapada Bandopadhyay. The tradition found more permanency in the works of artists Abanindranath Tagore, Nandalal Bose, and others. Artist Kshitindranath Majumdar's 'Geetgovinda' series is one such part of this fascinating rendition.

The societal life of undivided Bengal has deeply inspired artist Suhas Roy since his childhood. When he was a child, the idols of gods and goddesses or the oleographs of Raja Ravi Varma were the inspiration for him to develop an artist's soul. From his student self till various periods of his life, Suhas Roy has successfully enriched himself by capturing numerous aspects of cities and villages in his own style. However, the artist's printmaking skills and imaginative prowess are astounding. His works continue to leave us in awe, even today. After returning from France to Calcutta, where he went to pursue a higher degree in graphics artform, we came to observe a different and elevated form of abstraction in Suhas Roy's creations. Suhas Roy embarked on a new artistic journey when he dedicated himself to creating art featuring the divine Shri Radha. He began the series by painting "Radha-Krishna", drawing inspiration from various mythological stories. The series quickly gained popularity among the populace, with "Radha" becoming an iconic subject among art enthusiasts. Suhas Roy brought the canvas to life with his fascinating use of dry pastels and the Western Light and Shadow influence. Each depiction of Radha in Roy's series has become a unique entity of its own; to be more precise, Suhas Roy's 'Radha.'

-Jyotirmoy Bhattacharya




Biography of Artist Suhas Roy

The versatile painter of contemporary Bengal Art, Suhas Roy, was born on the 1st of September, 1936. Known for its soft and romanticised themes filled with sensuality and innocence, Suhas Roy has stroked his artistic journey through the bits and pieces of humbleness derived from this mortal life. Born in Dhaka, Bangladesh, Suhas Roy developed an interest in painting since childhood. His parents were Purnachandra Roy and Hemlata Roy. Art was something the Roy family had always been a keen admirer of. Roy's father was a manager at a Tea Company, and he was an art enthusiast, especially music.

They lived in their ancestral home in Dhaka. The Roy family had their share of happy days until Suhas Roy's father died when the artist was just a year and a half old. After the demise of Suhas Roy's father, his elder brother Subodh Roy took up his family's responsibility and had to lead their lives in difficulties. Yet, despite the hardships and pitfalls in life, Suhas Roy pursued his dream career of painting with the support of his mother.

Roy was an observant person since childhood. As a kid, his surroundings inspired him the most for painting. His earlier inspirations include the ornate images of Goddess Durga, the painted Theatre scenes used in the drama, paintings of Artist Raja Ravi Varma in the possession of his cousin, Rai Bahadur Rajendranath Roy, scenic greeneries, and the bright sky. The first lessons for Suhas Roy were when he used to copy the portraits of Rabindranath and Debendranath from the in-house calendars.

After the communal violence and the plight of the Indian partition, Suhas Roy and his family came to Haringhata in Nadia, West Bengal, in 1946. He heard about an art college



in Calcutta after coming to Haringhata. In 1951, Suhas Roy joined the Indian College of Arts and Draftsmanship as a student. He left his house at 7 in the morning and had to travel daily from Nadia to Calcutta by train. During this time, Suhas Roy befriended later acclaimed artists like Ganesh Pyne, Lalu Prasad Shaw, Bikash Bhattacharya, and others, who were students of his college's competitor, Government Art College. Suhas Roy pursued his degree in painting with graphics and sculpture as his additional subjects. He learned painting in terms of 'British Conservatism.' Roy has even painted for the cover of the renowned Bengali magazine Desh in 1958. Soon after graduating in 1958, Suhas Roy started to look for employment. Though, he wished to apply for the job vacancy as a graphic teacher after Veteran artist Somenath Hore went off to Delhi. But Roy couldn't apply for the post as he was blacklisted due to leading a student movement. However, after two years, he got the job. Roy also started to apply for other commercial-based art jobs in the city. He worked on the graphics of the medical book Gray's Anatomy.

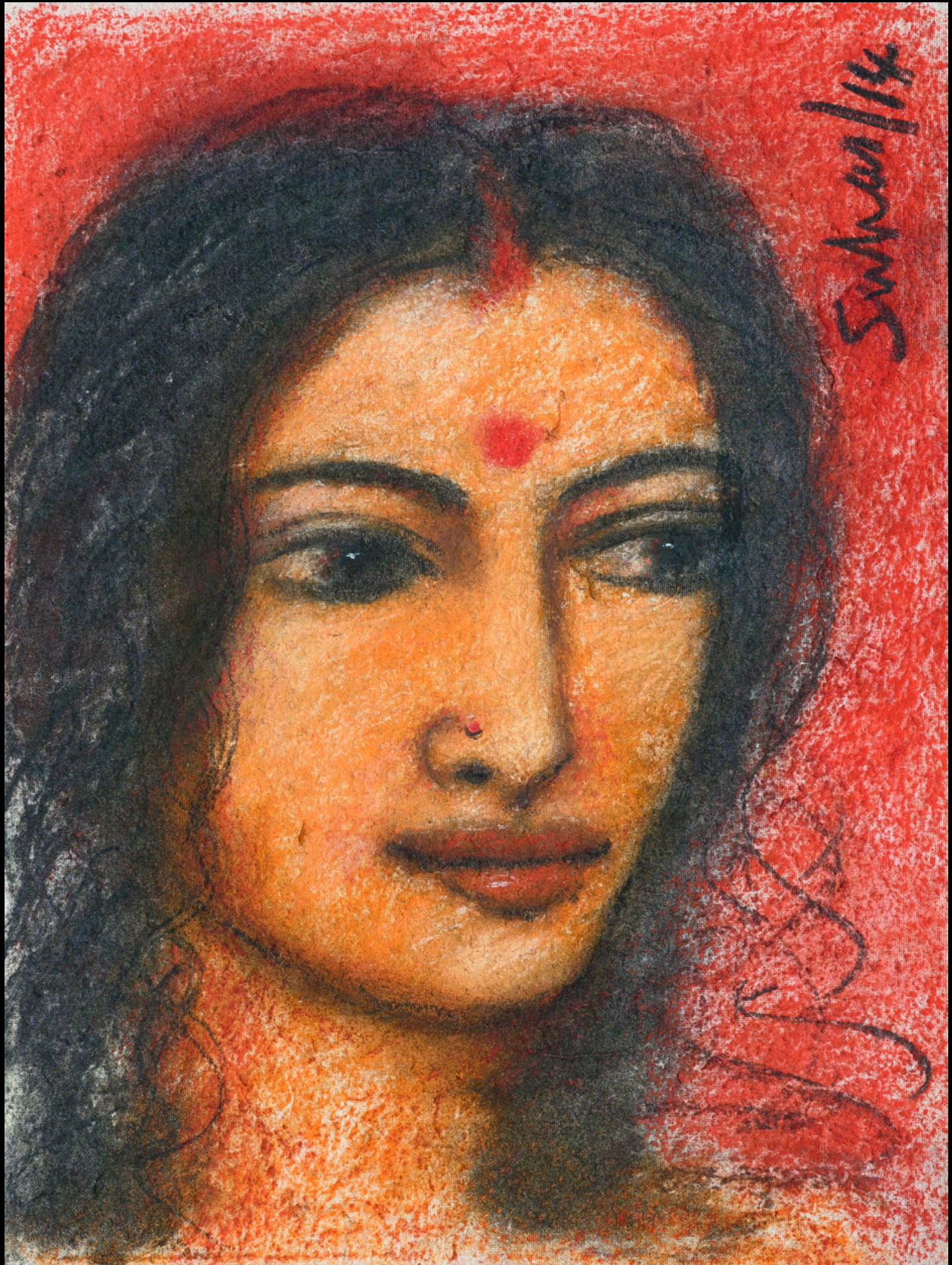
After completing his course, Roy learned from the Veteran artist Atul Basu, who has a rented room in Netaji Subhash Chandra Bose's house to work on live models. In 1960, Suhas Roy joined the Society of Contemporary Artists at 17A Mysore Road, Calcutta, as one of the founding members. He stayed actively involved in group meetings, individual growth, and discussions for the development of Bengal's art.

In 1964, Suhas Roy applied for a scholarship in France but couldn't make it in the first attempt. On his next try, Roy qualified and went to Paris to study and work on modern art. He learned graphic arts under the schooling of S.W Hayter at Atelier 17 Ecole Superior Des Beaux Arts, Paris. After a year, Suhas Roy returned to Calcutta at his old job in the college and resumed his experiments with graphics. During this time, he introduced his renowned pictorial idea, 'Stare.' Also, he got married to his once-fellow student and beloved one, Jharna. Jharna Roy was a schoolteacher in Howrah, and they had two children, Suman and Kathakali. In 1967, he got into painting in full throttle. His paintings, which once crept into fantasy and the serenity of pastoral sceneries, were now unleashed into the clutches of reality. They were mainly affected by the Naxalite movement in the early 70s. In 1971, he became the Principal of the Indian College of Art and Draftsmanship. However, due to the workload of the college administration, Suhas Roy took a job in Kala Bhawan, Santiniketan. During his Santiniketan phase, Suhas Roy painted the most than in his entire life. Later, he retired from Kala Bhawan. He remained on the simple side of aestheticism throughout the rest of his life. Throughout his life, Suhas Roy has painted with versatility. He started painting with female portraits and forms. Most of his works are subject to romanticism, innocence, and sensuality. His themes were mainly a projection of everyday life. Due to his subjectivity of grace, passion, and elegance, he worked with crayons, charcoal, and brushes to retain the romantic element.

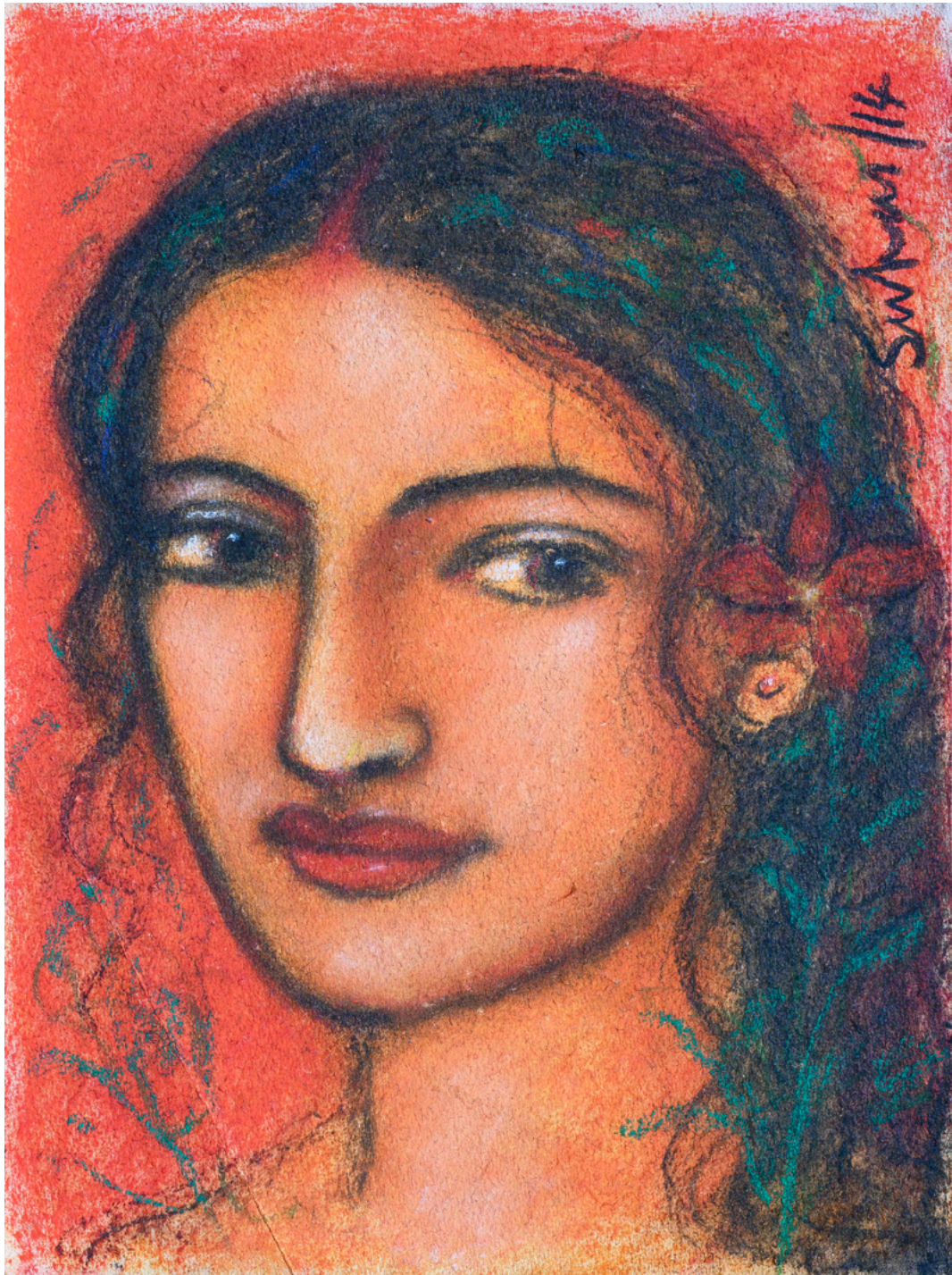
Some of Suhas Roy's notable works include 'Landscape' (series), 'Simplicity' (series), 'Radha' (series), 'Mistress of the Moon' (series), 'Twilight' (series), and 'Jesus: Bridging the Gaps...Through the Gospel' (series). Suhas Roy's artworks have been exhibited globally through notable exhibitions such as the Asian Graphic Prints Travelling Exhibition, 'Indian Harvest' presented by Crimson- The Art Resouce, Bangalore at SG Private Banking, Singapore, 'Exhibition of Women In Indian Art' organized by The Gallery, Hong Kong, Tokyo Print Biennale, Japan, 'Wounds' at the Central Institute Modern Art, New Delhi, and the National Modern Art, New Delhi.

In 2015, the West Bengal government awarded Suhas Roy the 'Life Time Achievement Award'. In 2016, the veteran artist Suhas Roy passed away.

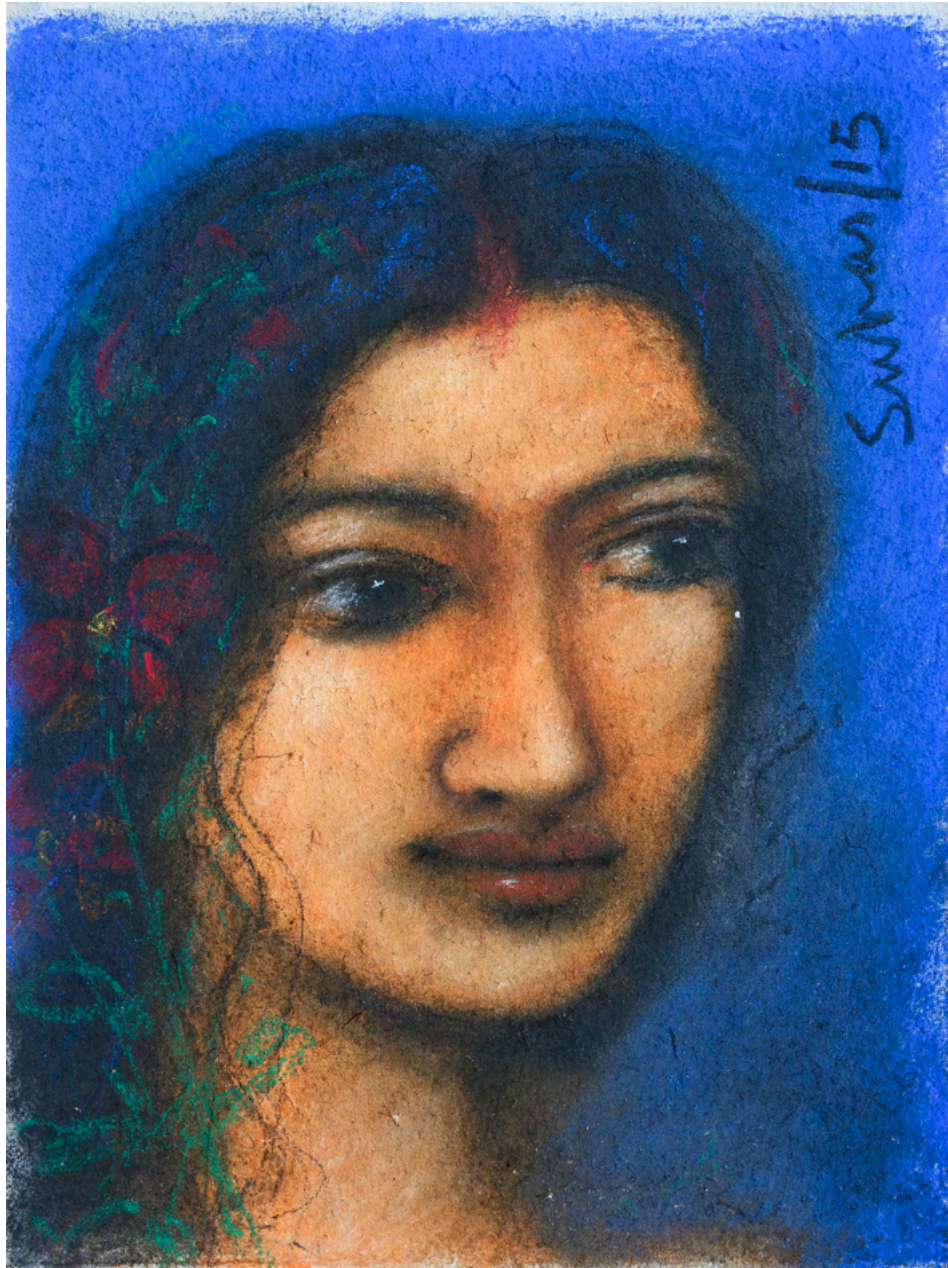
SUHAS ROY'S
SKETCH BOOK



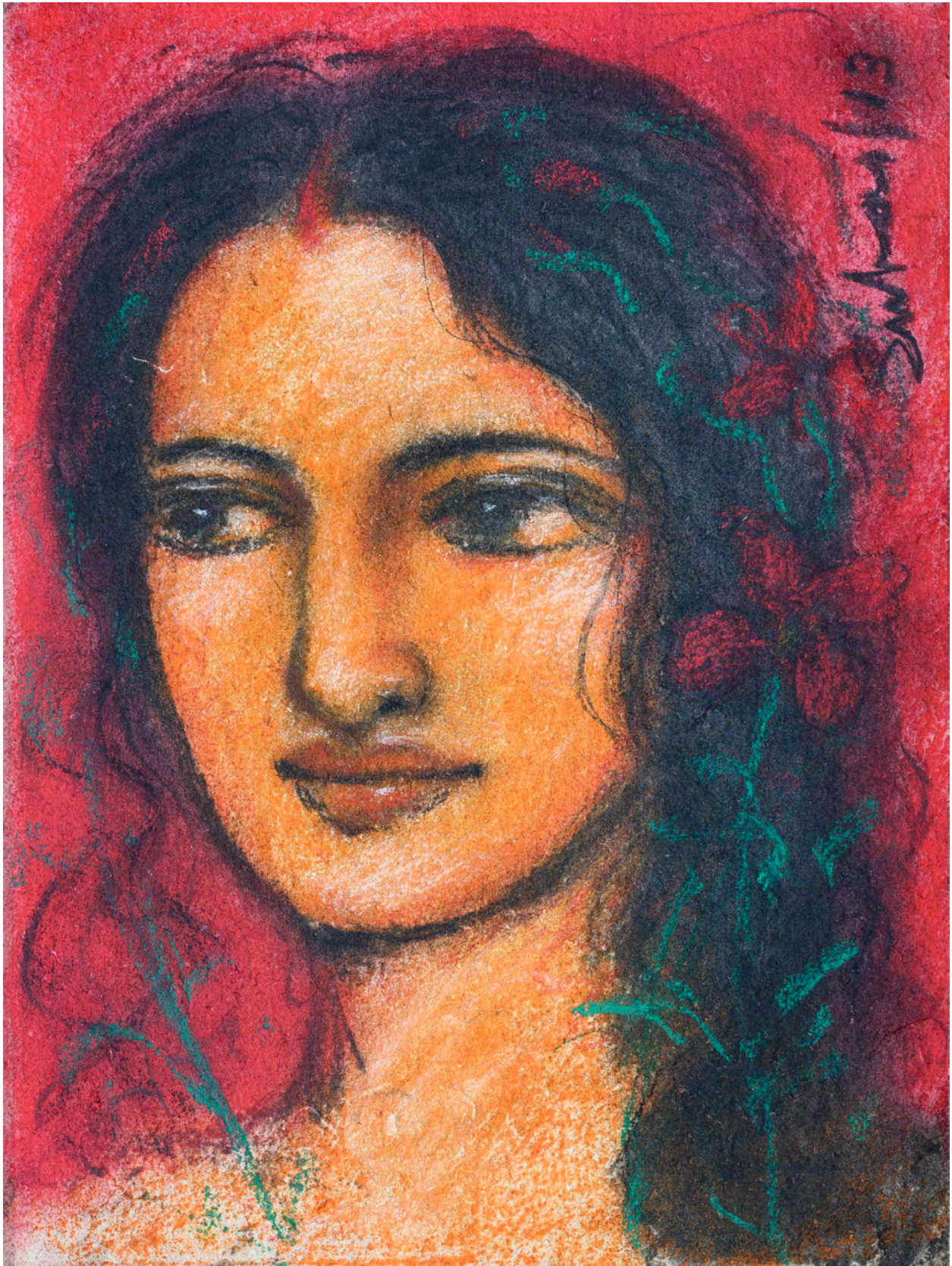
Mixed Media on Paper, 15x11, 2014



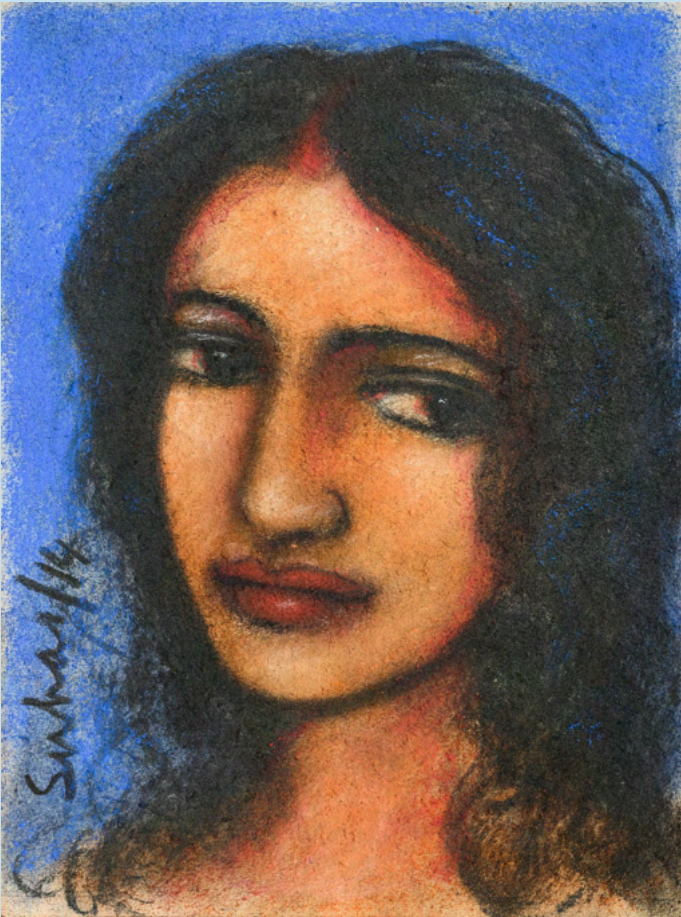
Mixed Media on Paper, 14.6x11, 2014



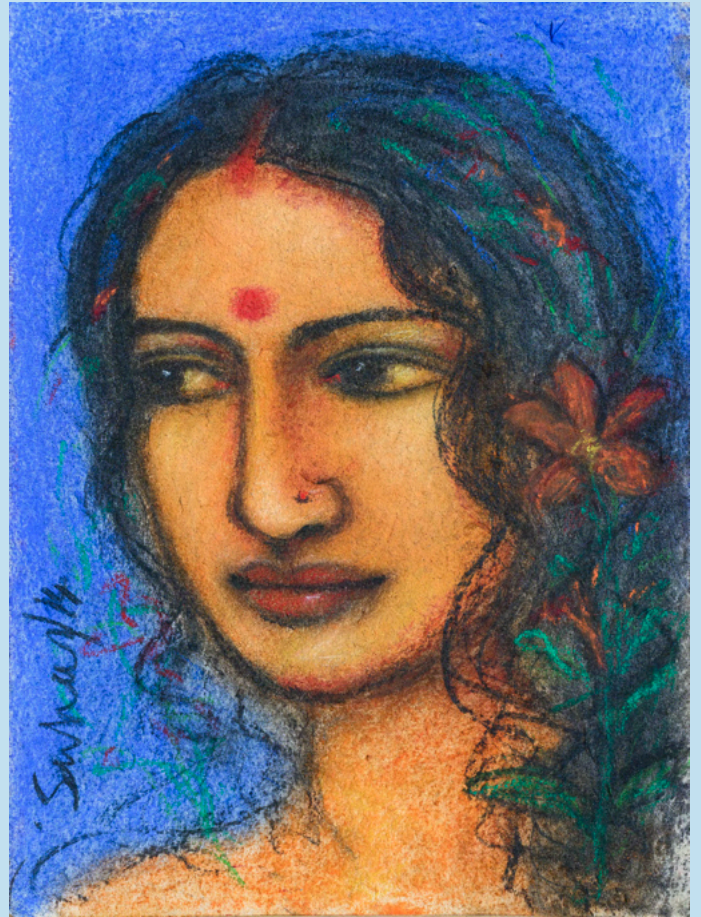
Mixed Media on Paper, 15x11, 2015



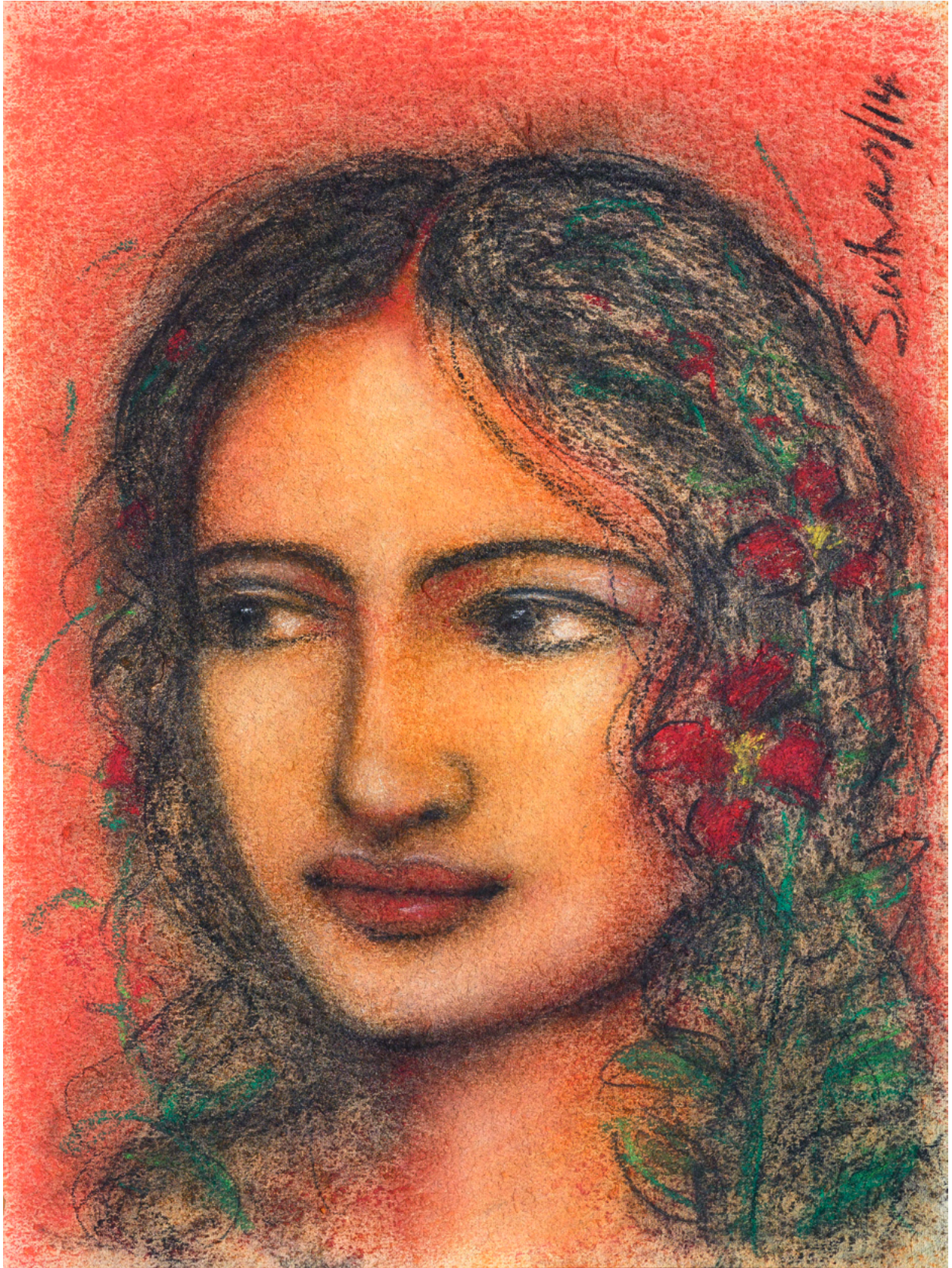
Mixed Media on Paper, 15x11, 2013



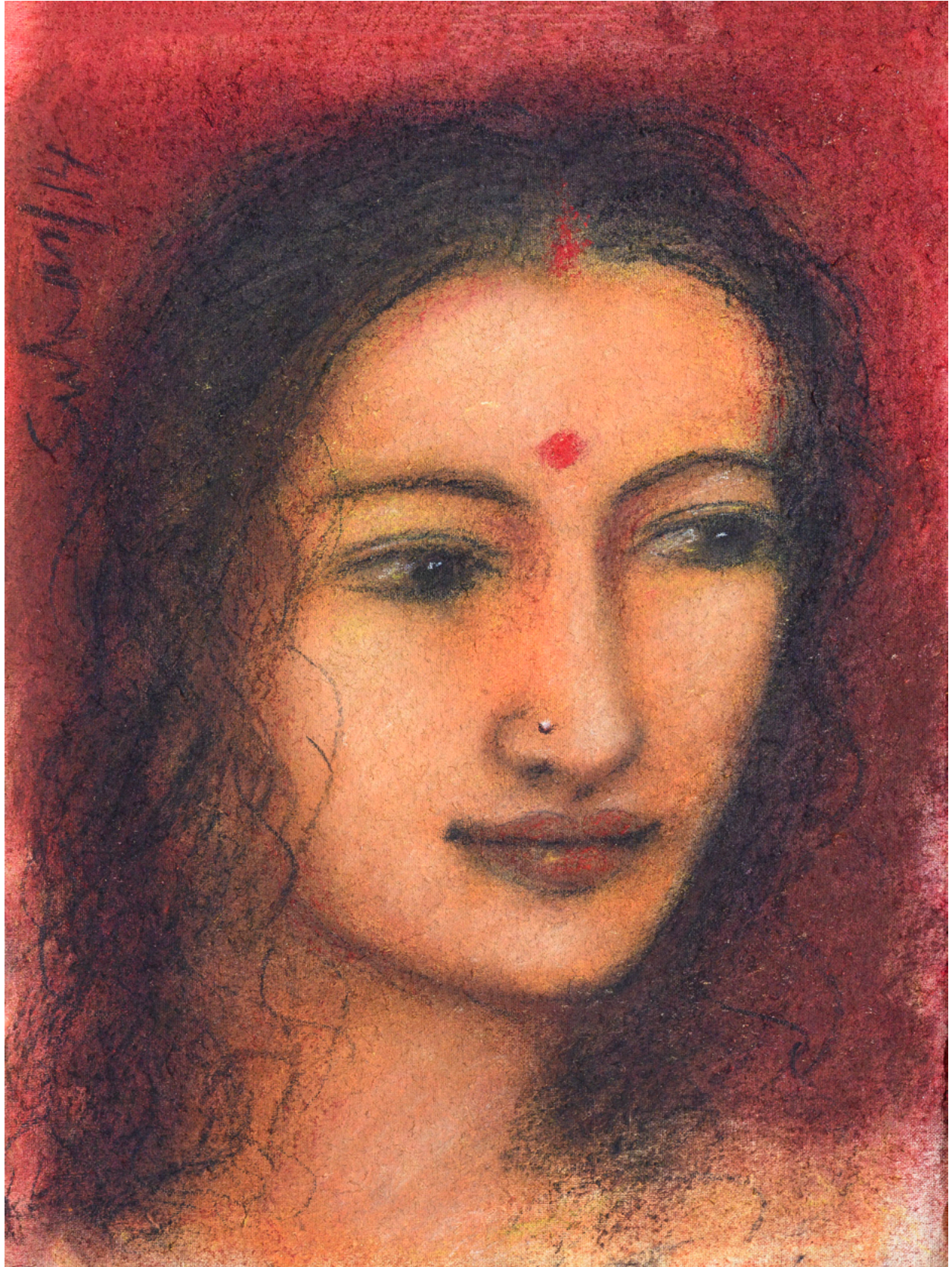
Mixed Media on Paper, 15x11, 2014



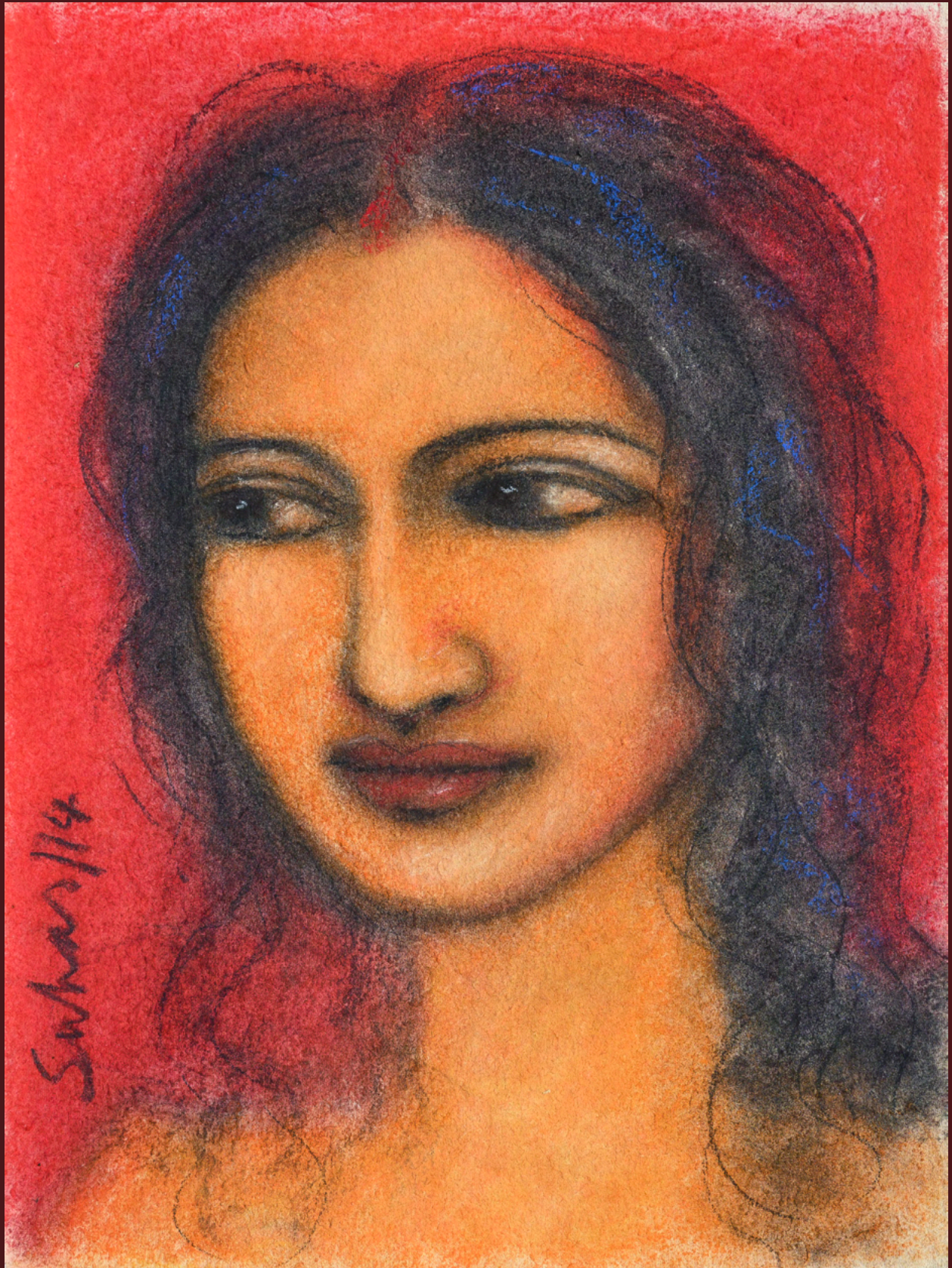
Mixed Media on Paper, 14.6x11, 2014



Mixed Media on Paper, 14.6x11, 2014

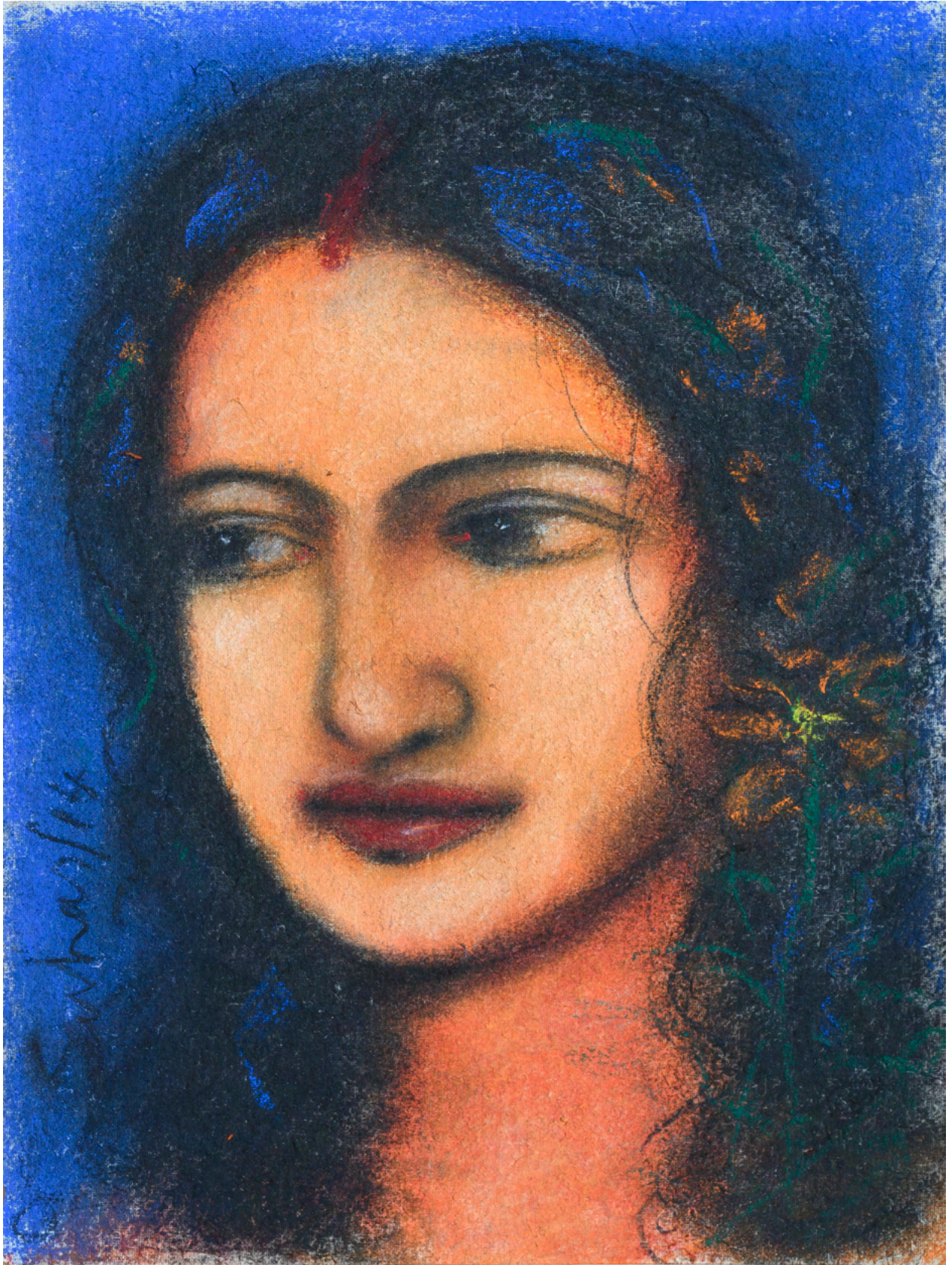


Mixed Media on Paper, 15x11, 2014

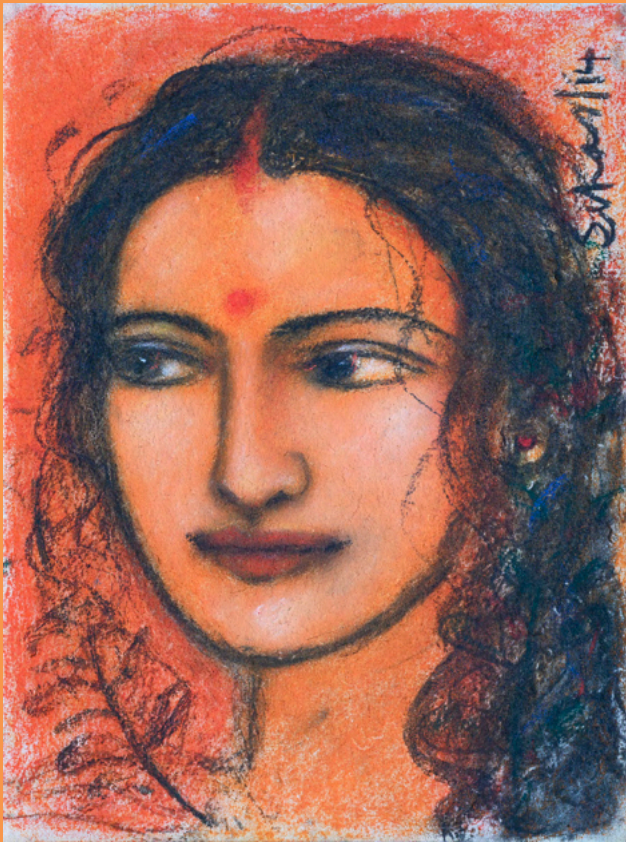


Suhans/14

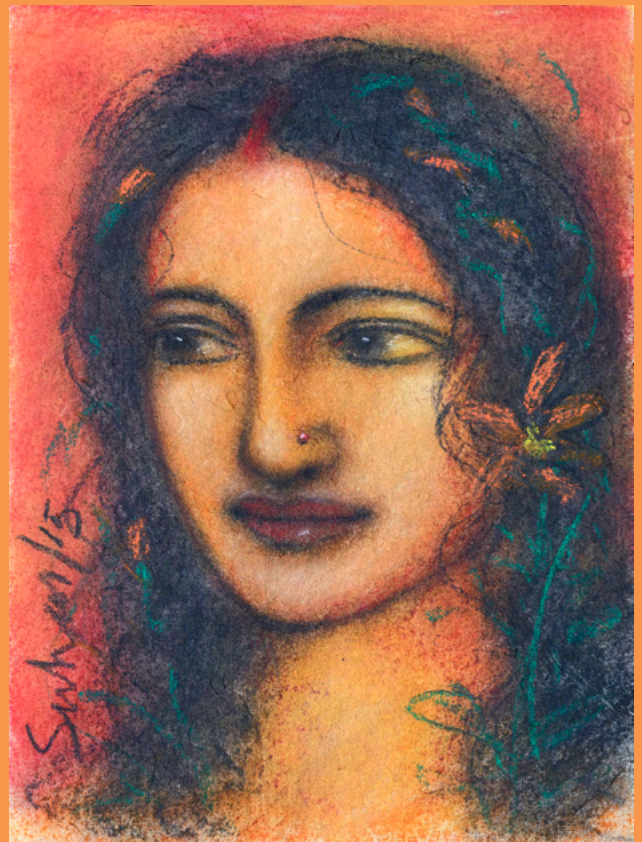
Mixed Media on Paper, 14.6x11, 2014



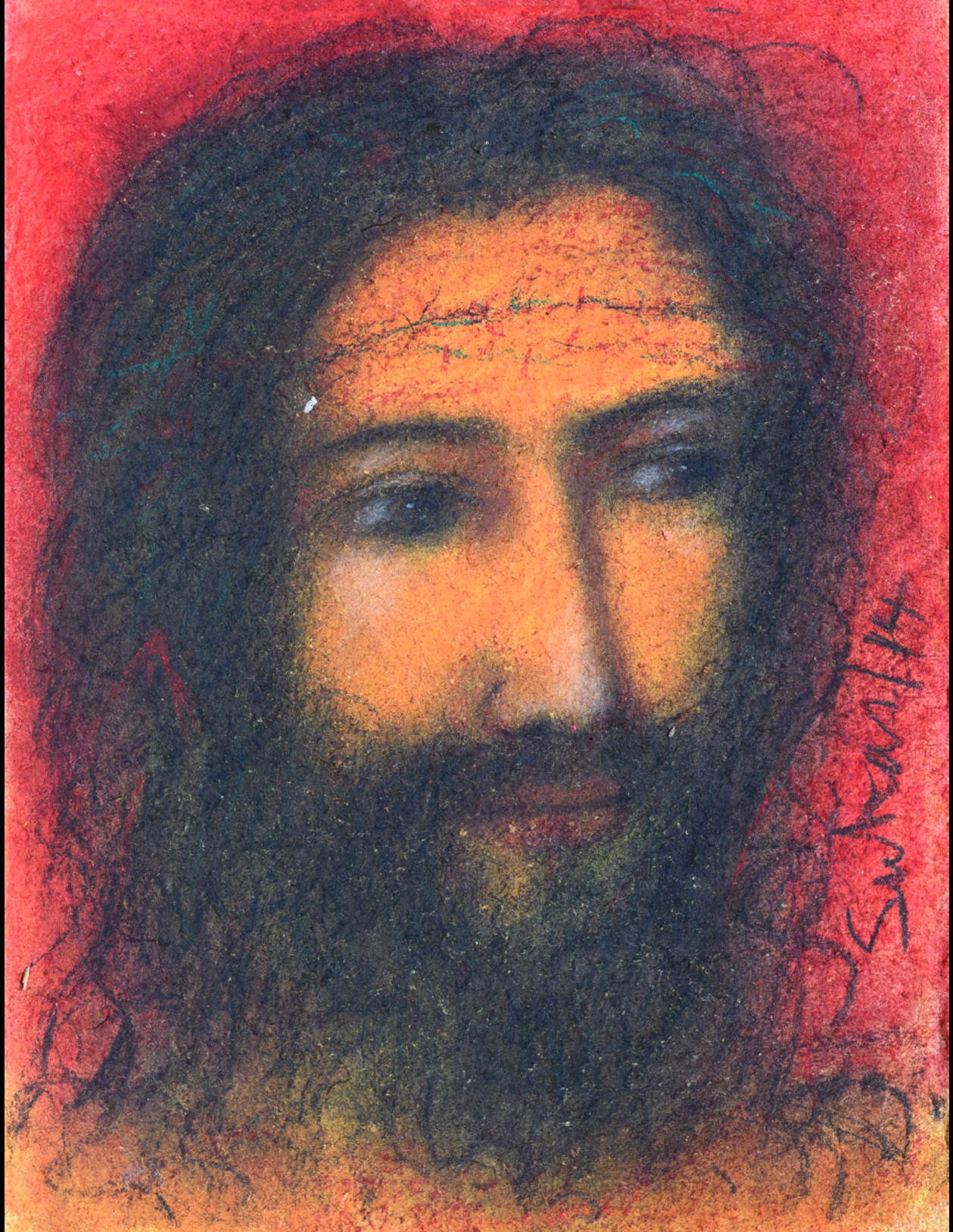
Mixed Media on Paper, 14.6x11, 2014



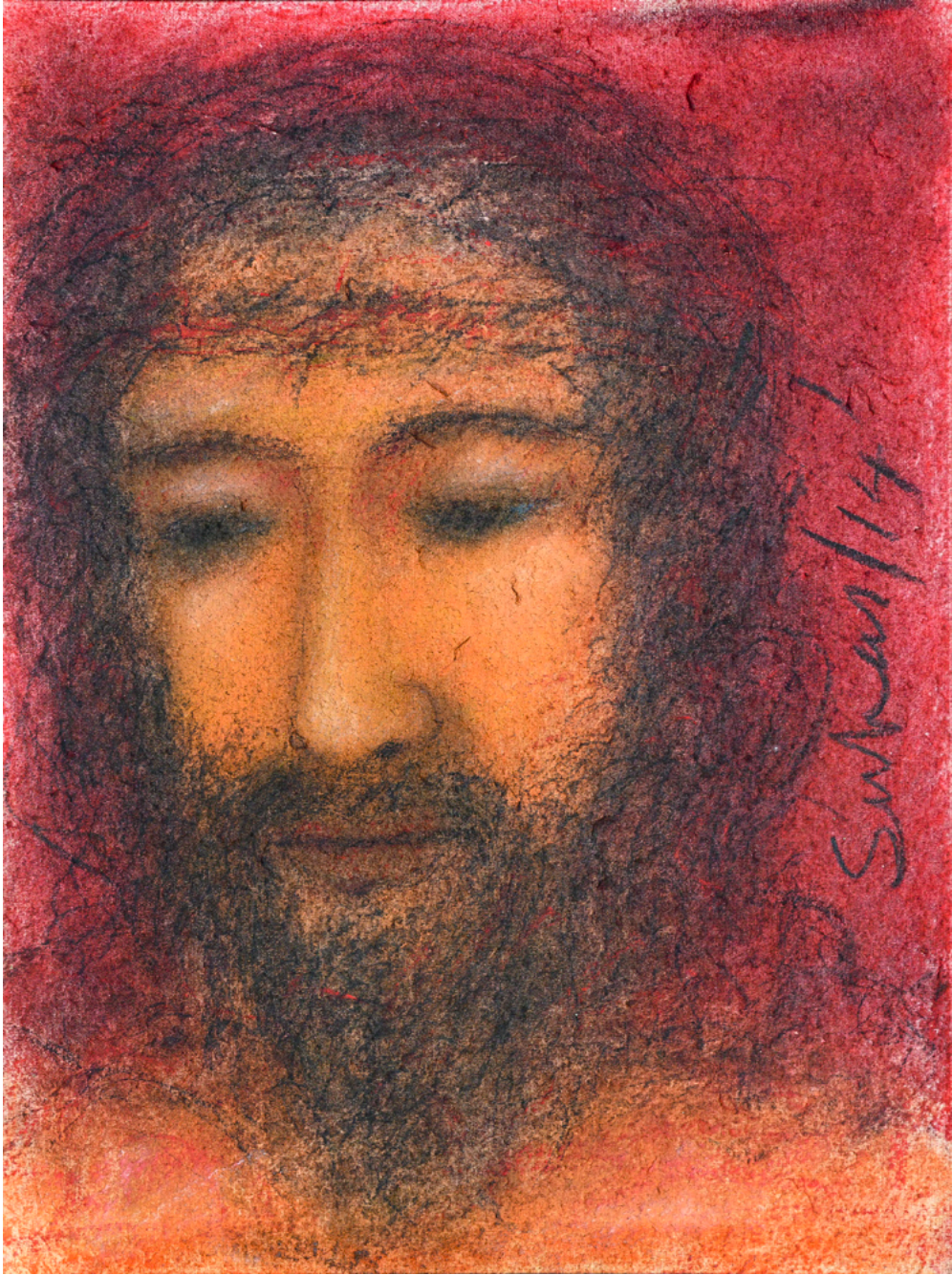
Mixed Media on Paper, 15x11, 2014



Mixed Media on Paper, 15x11, 2015



Mixed Media on Paper, 14.6x11, 2014

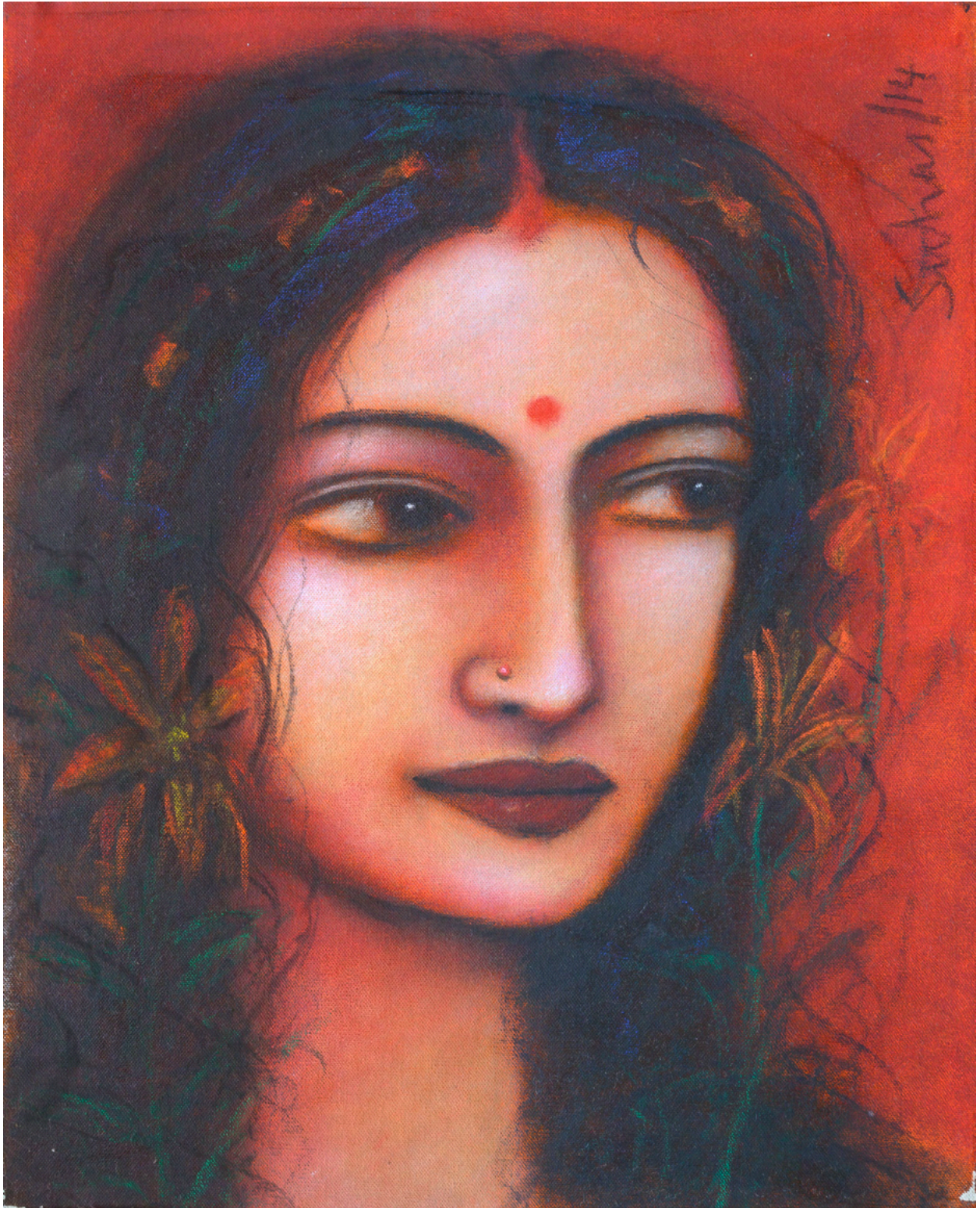


Mixed Media on Paper, 14.6x11, 2014

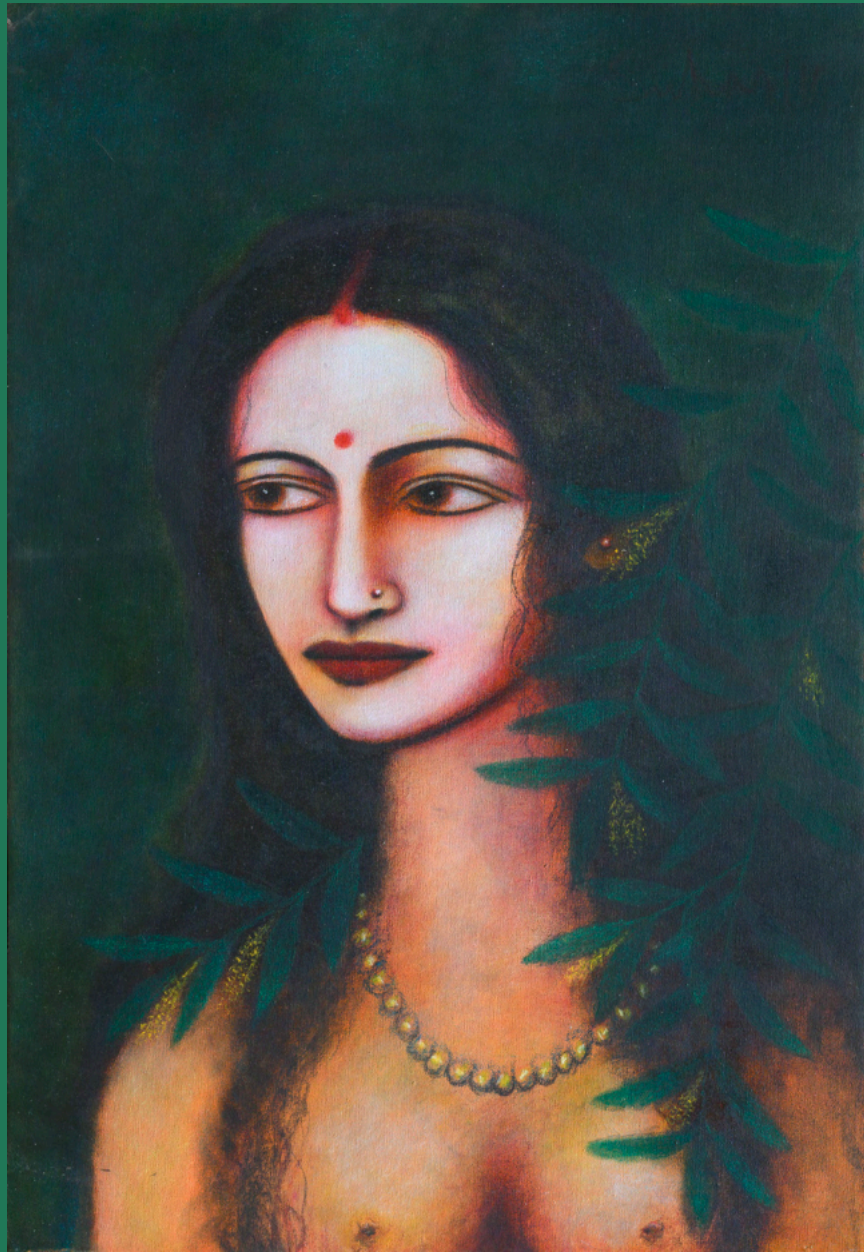


Mixed Media on Paper, 15x11, 2014

PAINTINGS



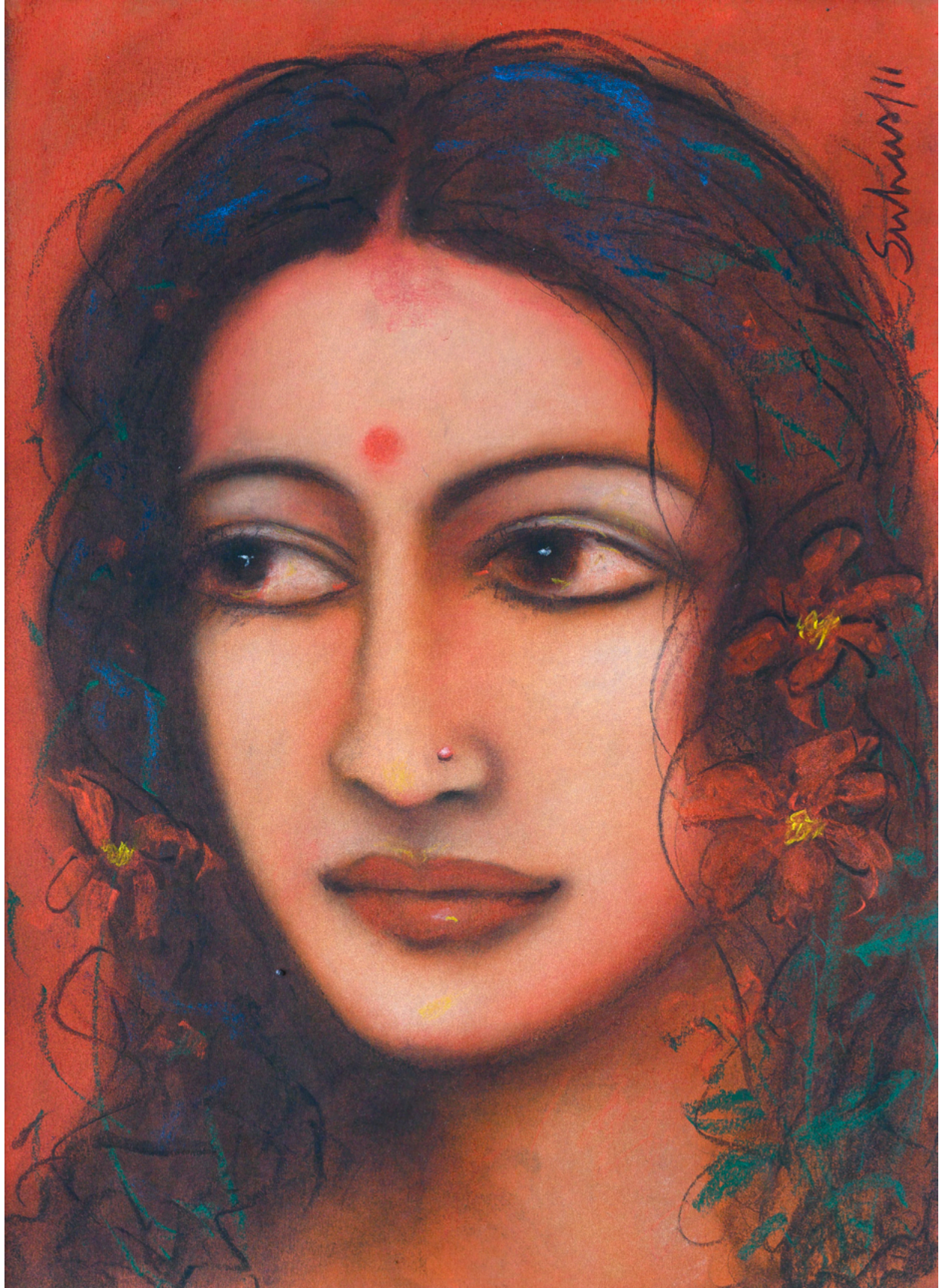
Mixed Media on Canvas, 16 x 20, 2014



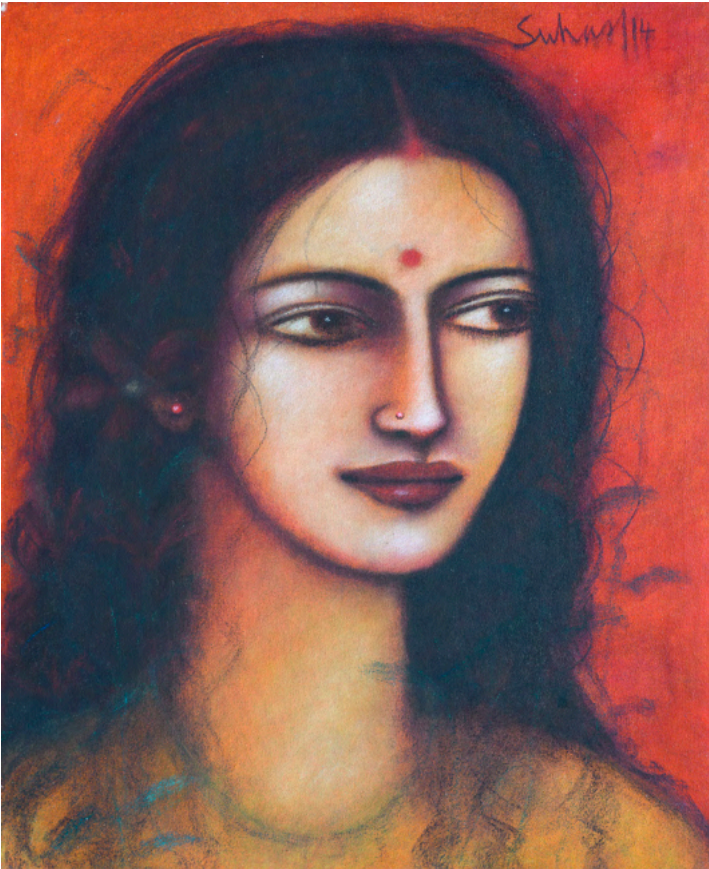
Mixed Media on Canvas, 24 x35, 2011



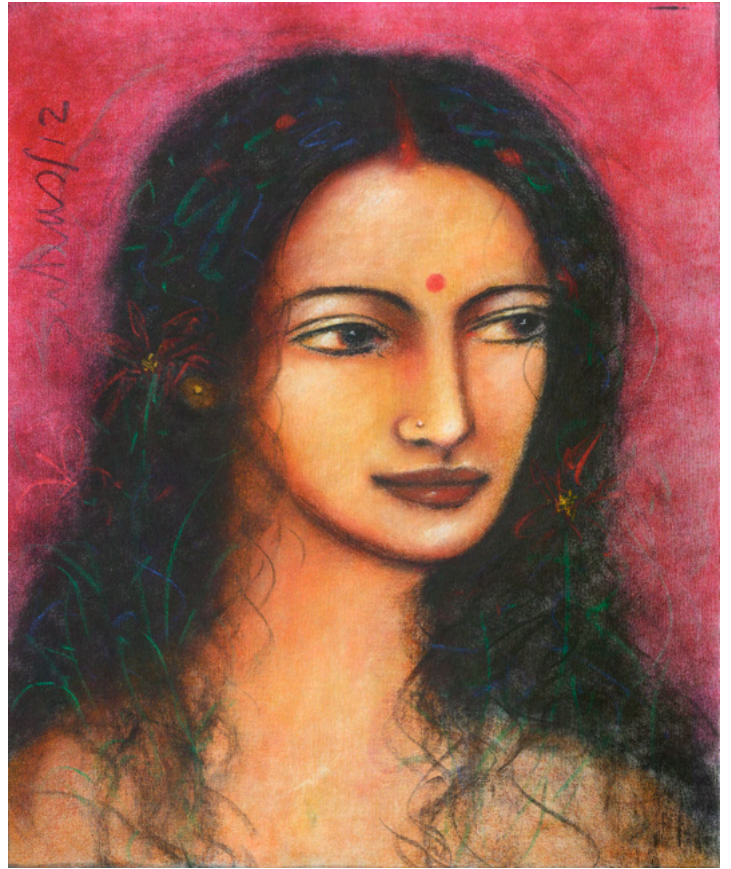
Mixed Media on Paper, 16.6 x 19.6, 2011



Mixed Media on Paper, 13.6 x 18.6, 2011



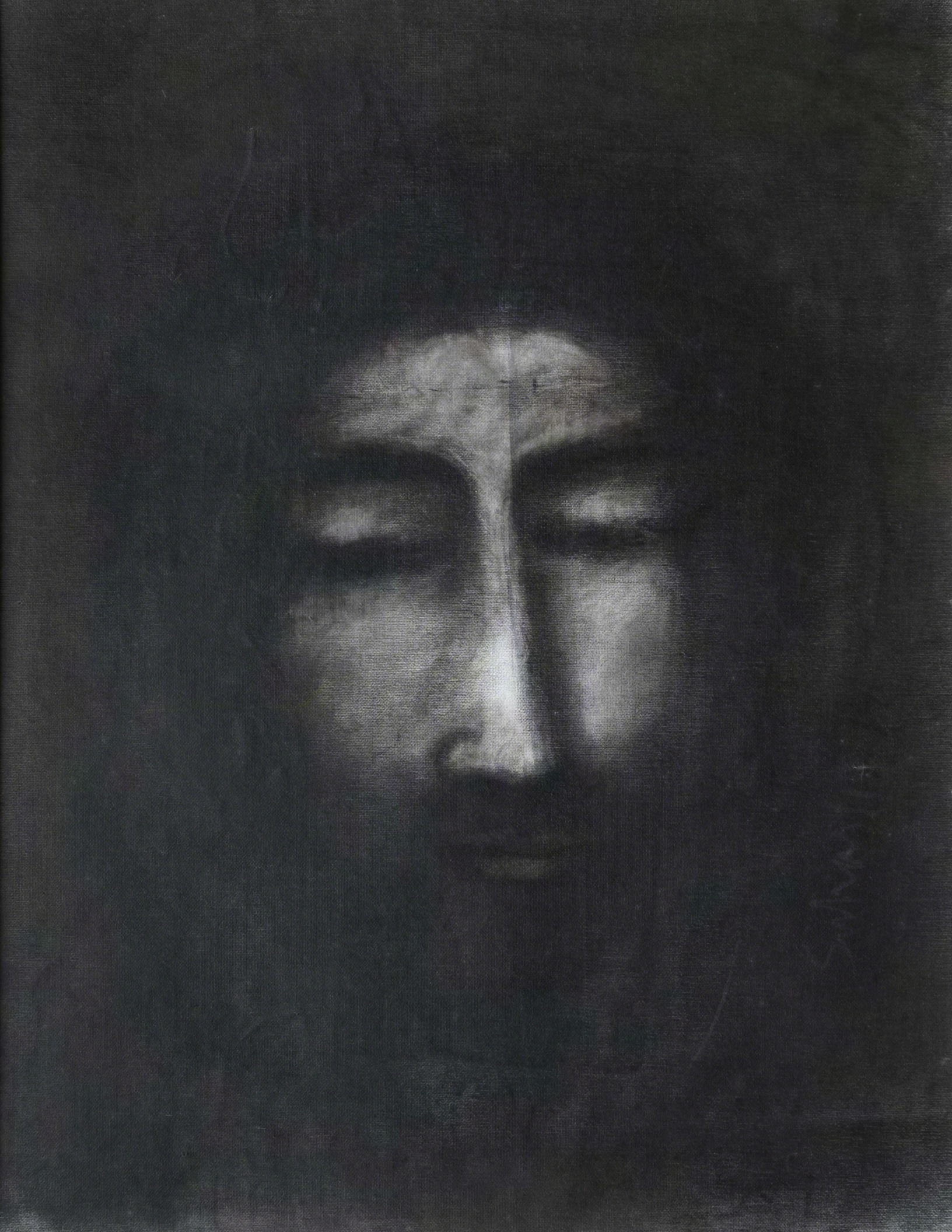
Mixed Media on Canvas, 24 x 30, 2014

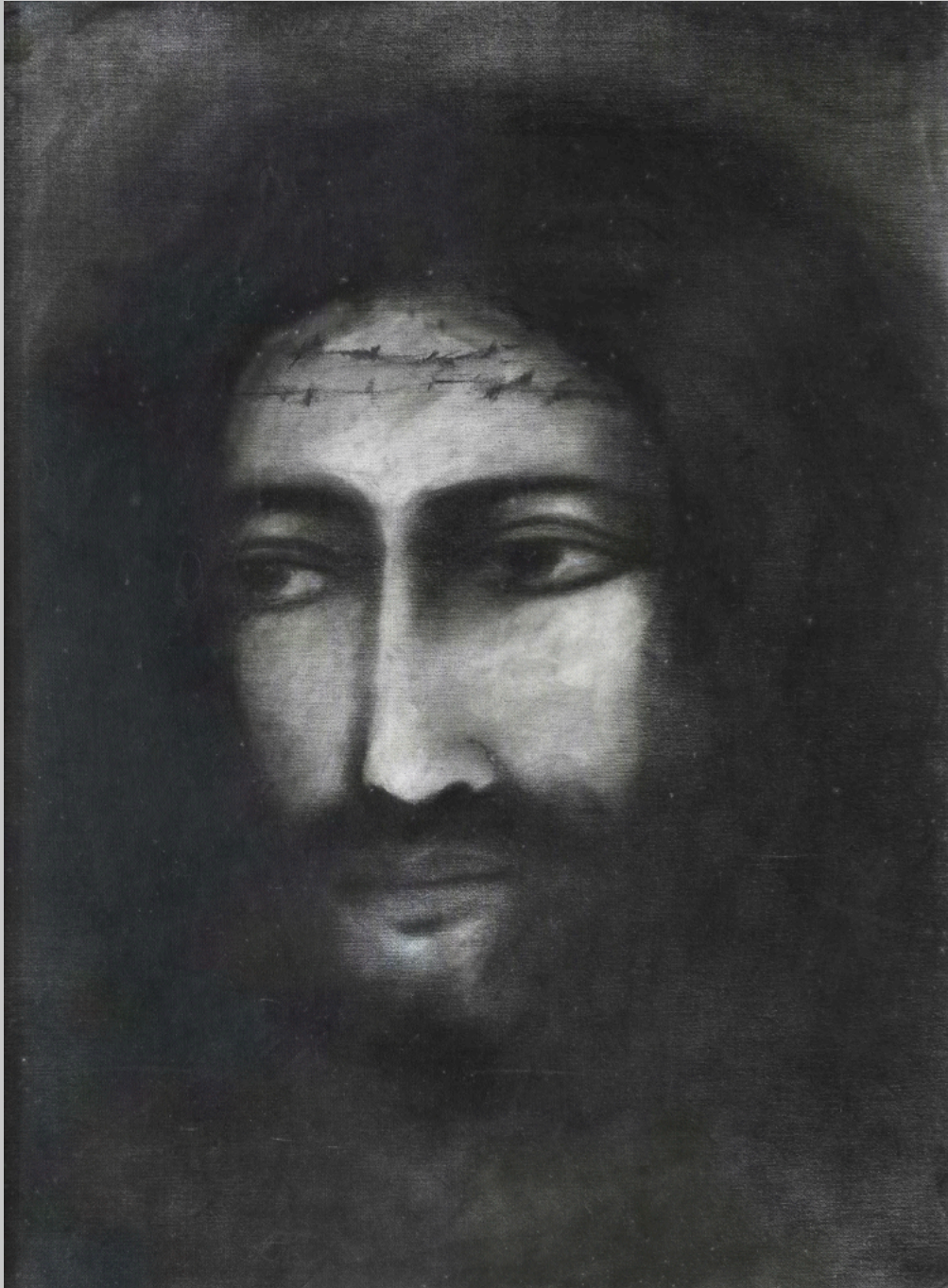


Mixed Media on Canvas, 24 x 30, 2012



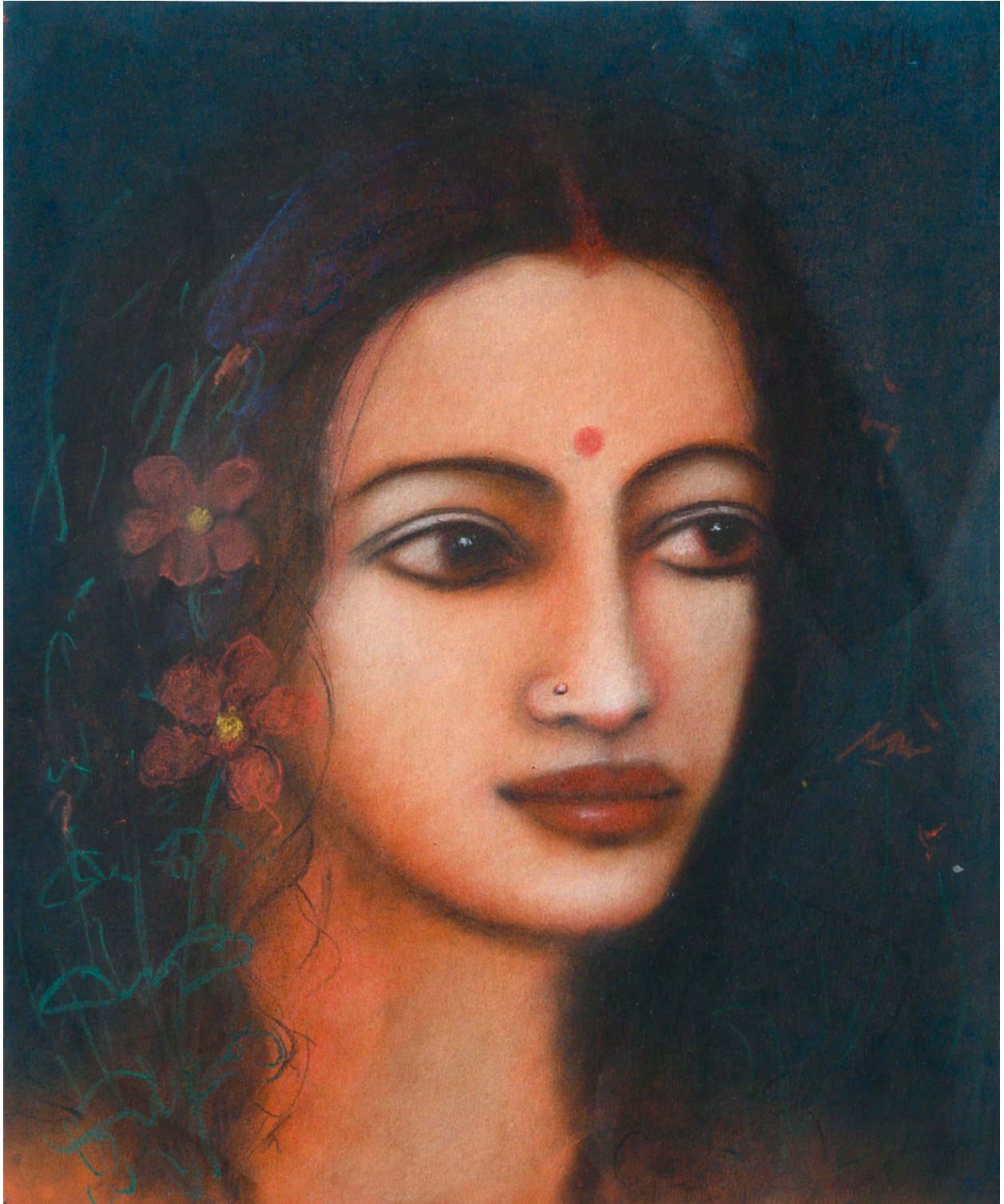
County on Paper, 20 x 28, 2011



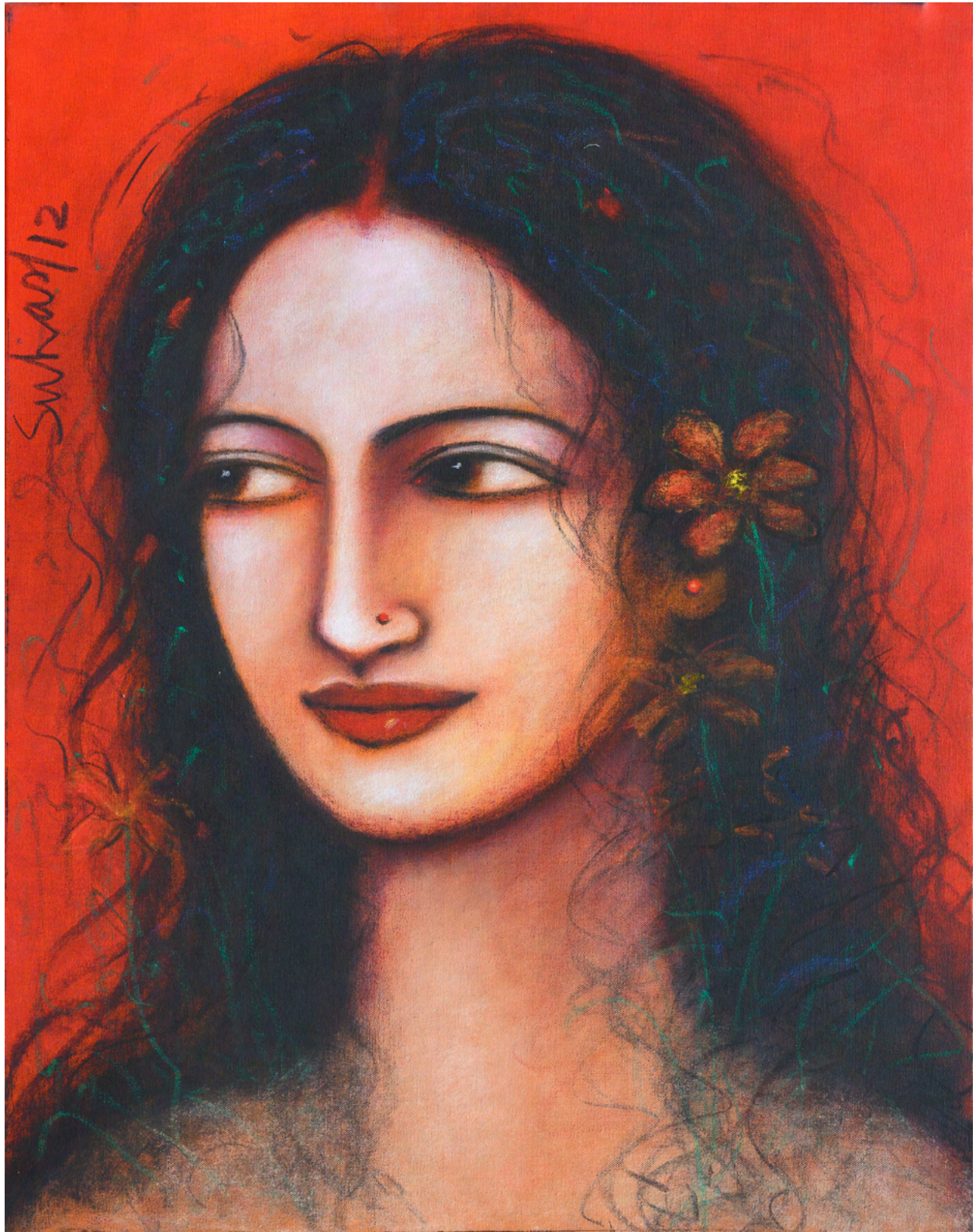


Charcoal on Canvas, 16 x 22

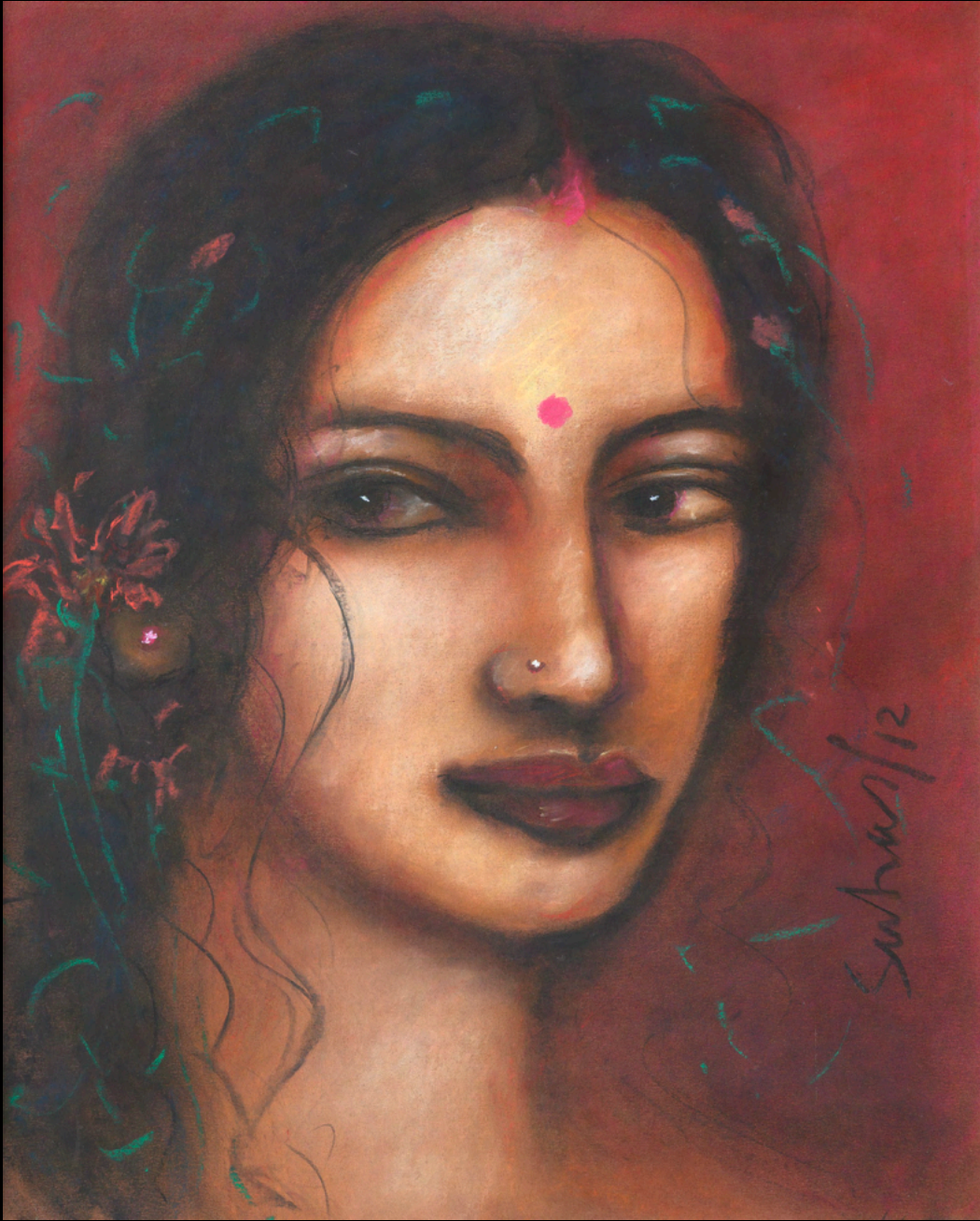
Charcoal on Canvas, 16 x 21



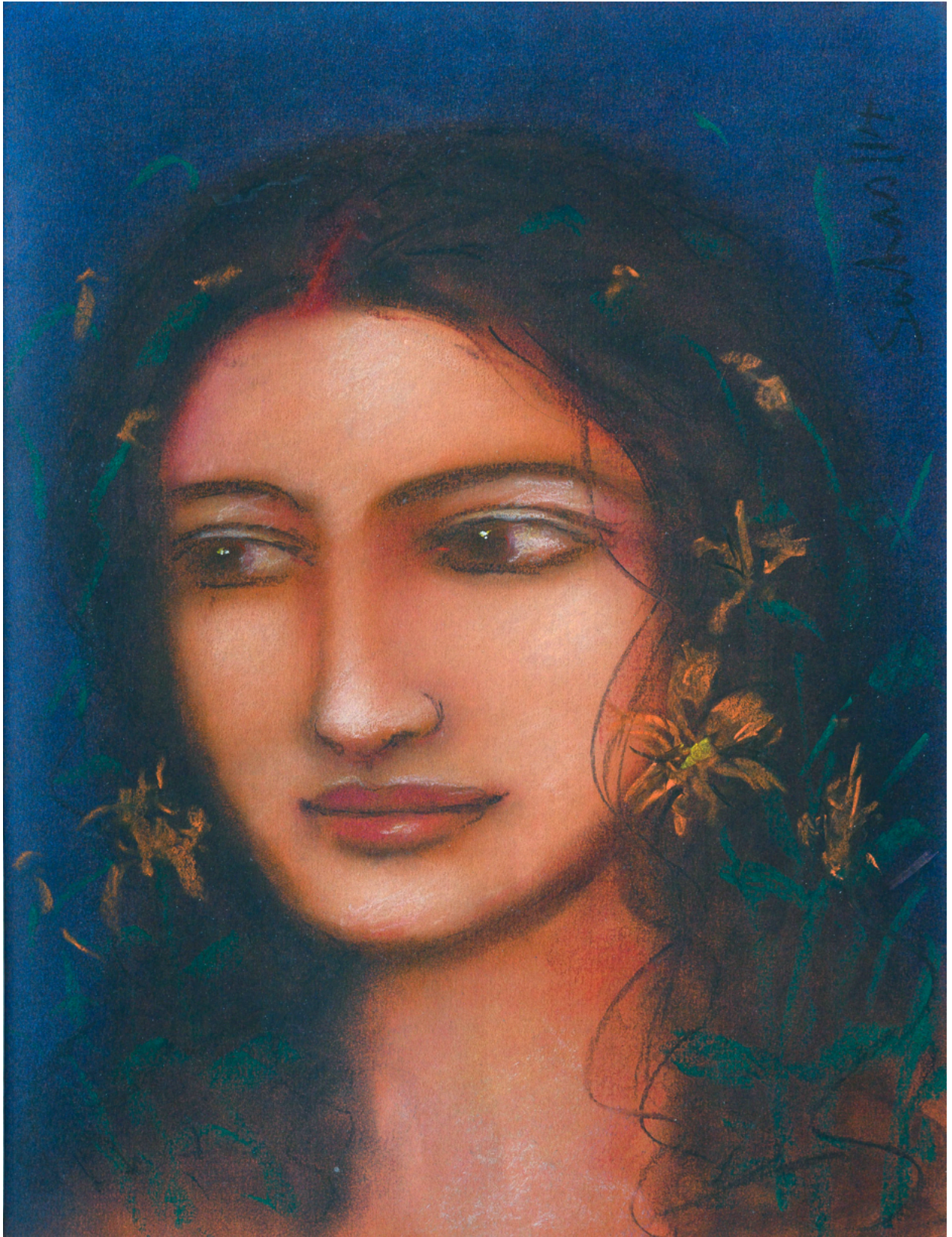
Mixed Media on Paper, 16 x 20, 2014



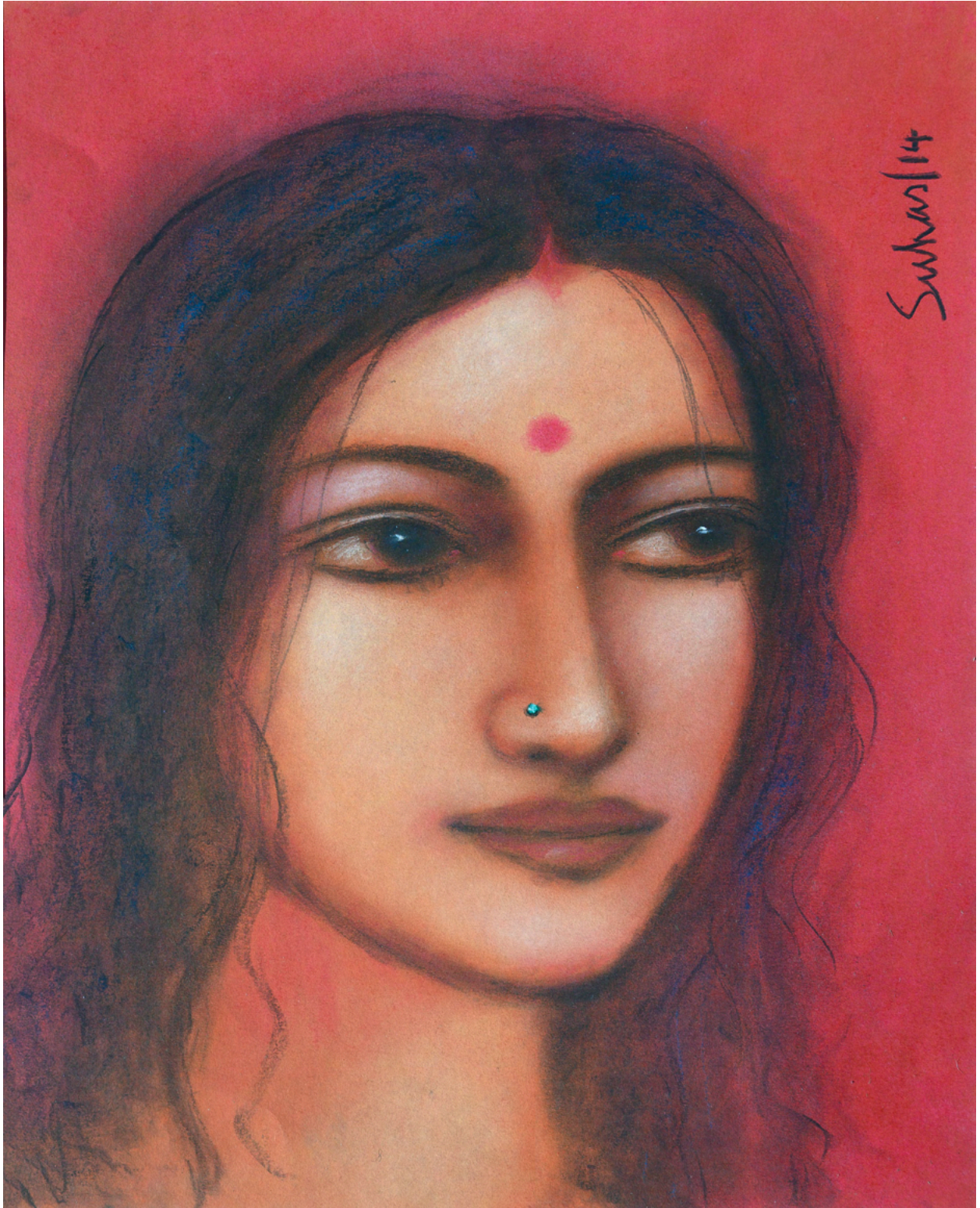
Mixed Media on Canvas, 24 x 30, 2012



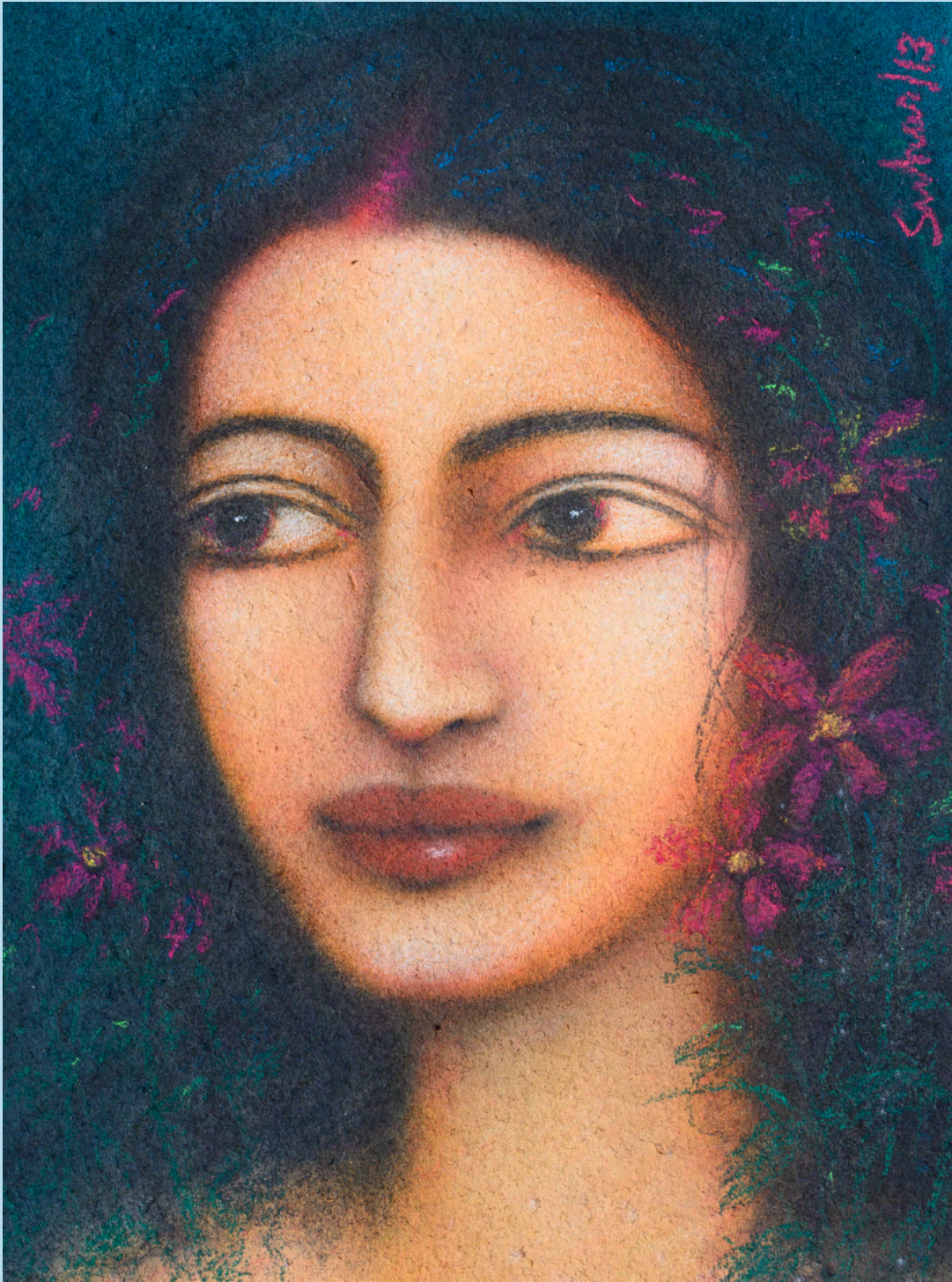
Mixed Media on Paper, 16.8x20.8, 2012



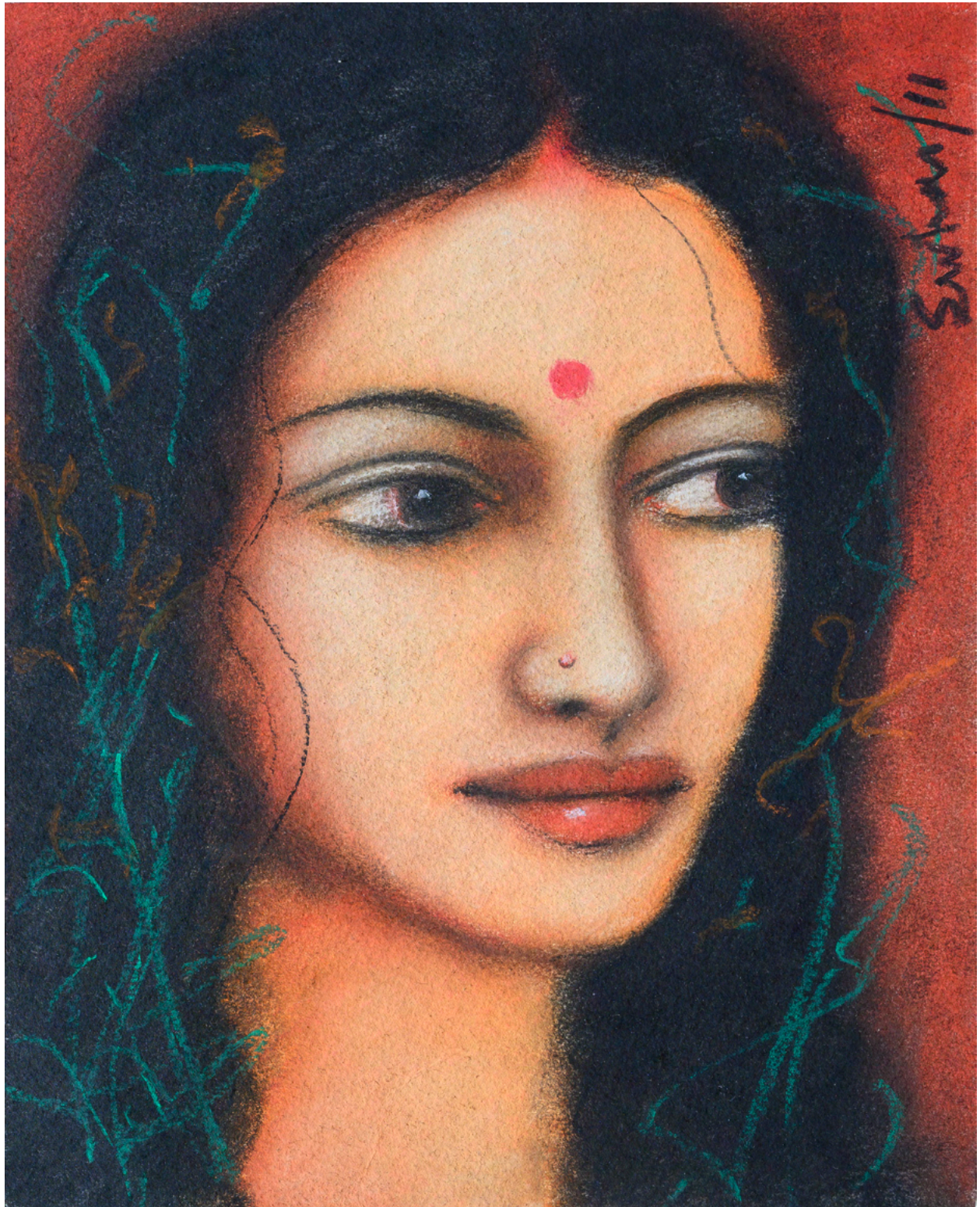
Mixed Media on Paper, 12.4x16.4, 2014



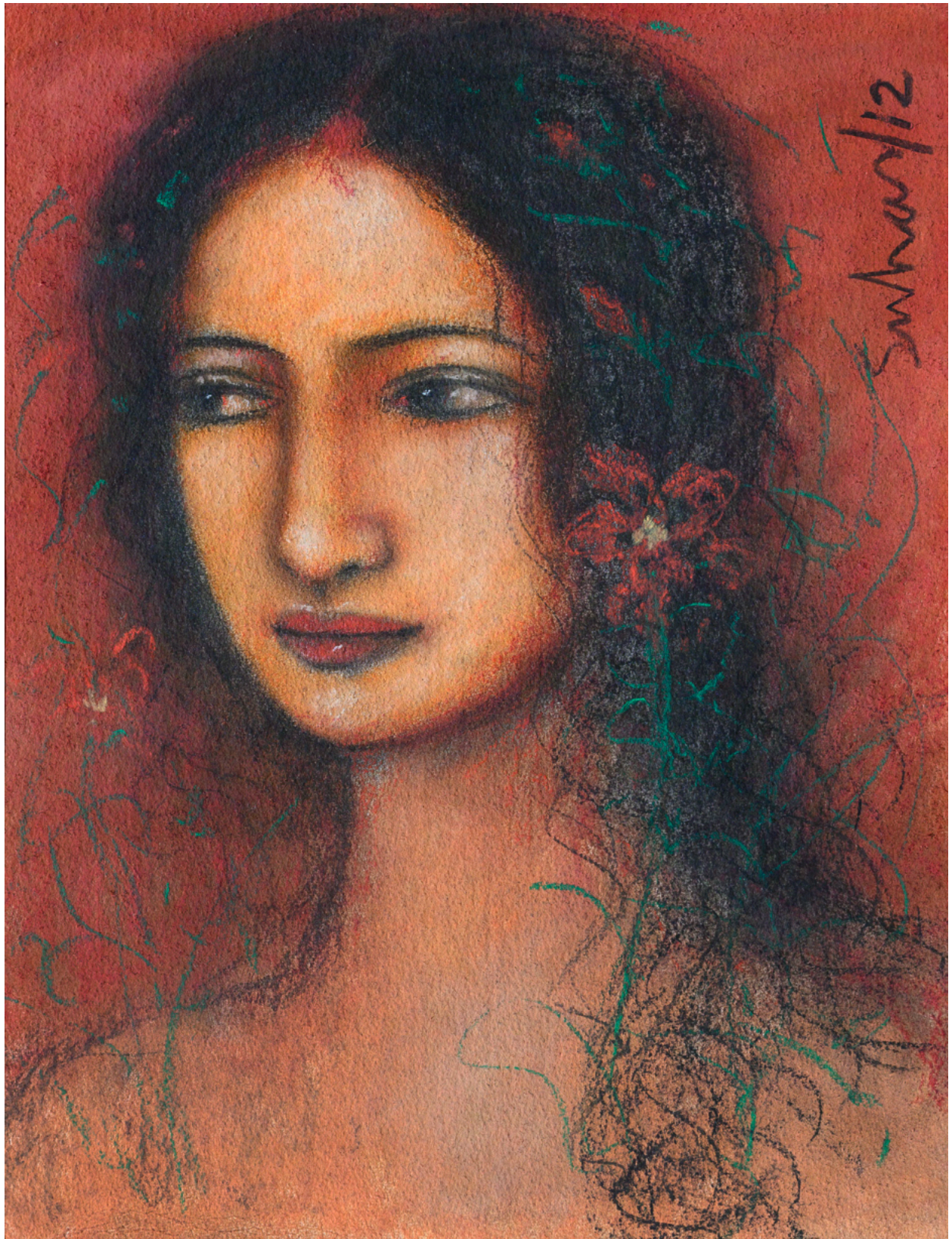
Mixed Media on Paper, 16 x 20, 2014



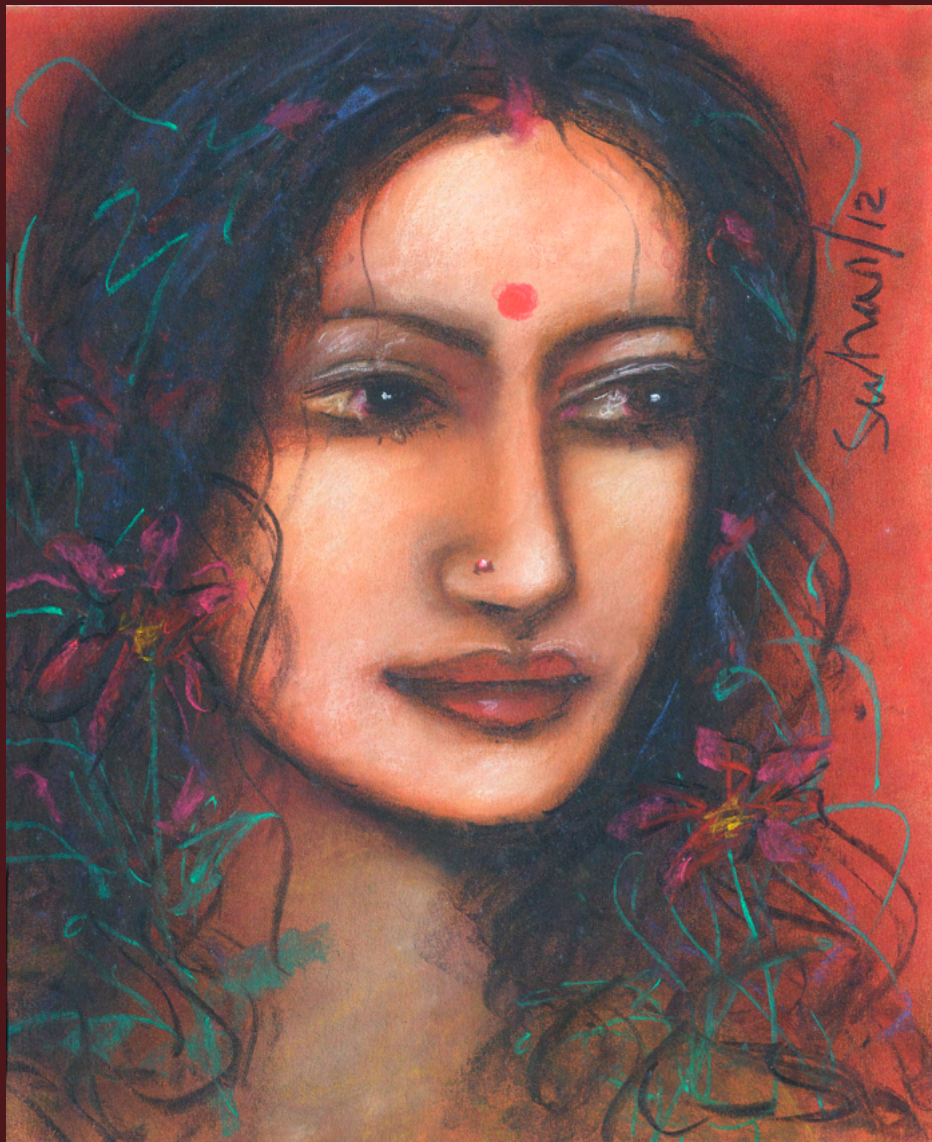
Mixed Media on Paper, 16 x 12, 2013



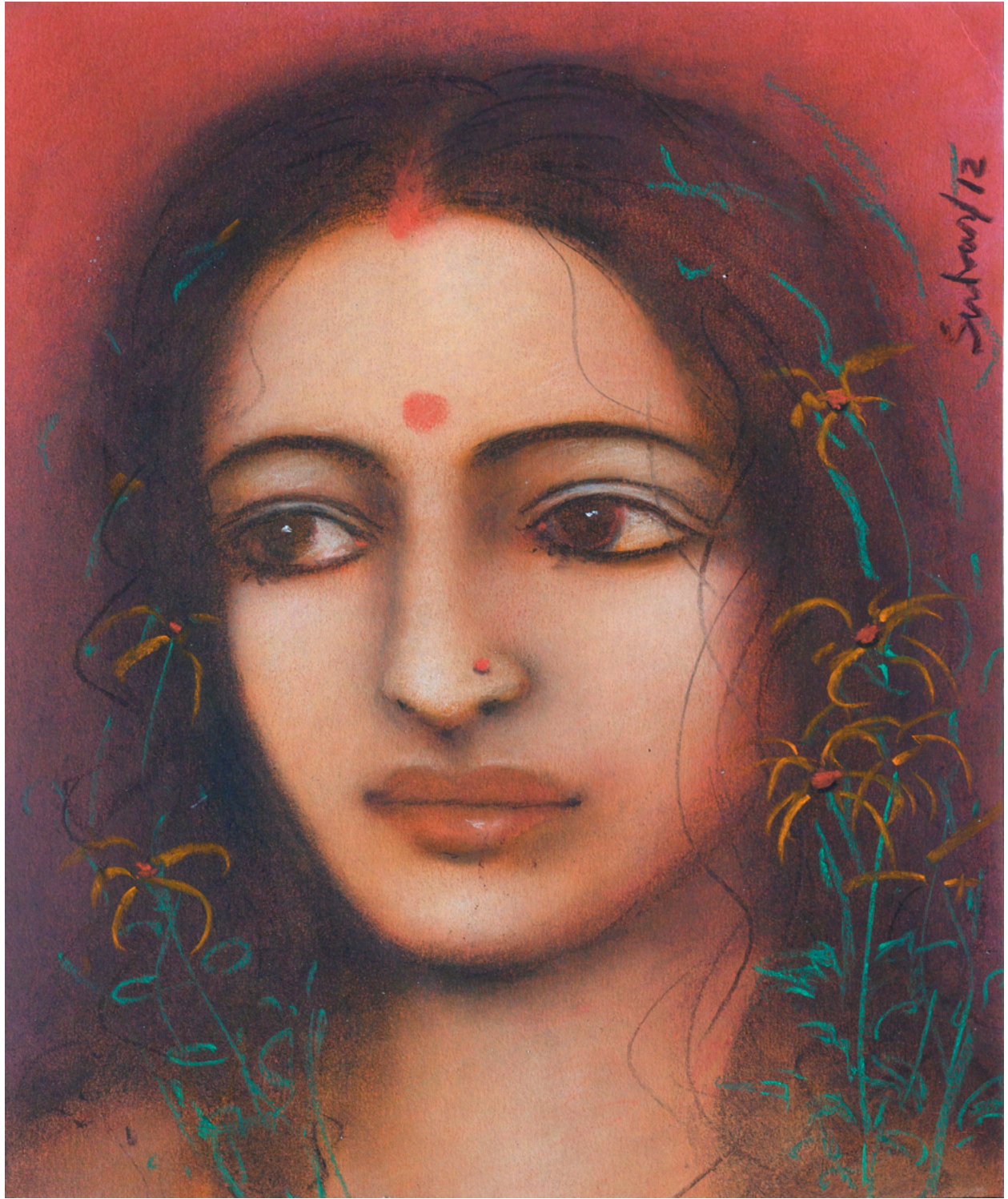
Mixed Media on Paper, 11.6 x 13.6, 2012



Mixed Media on Paper, 16 x 20, 2012

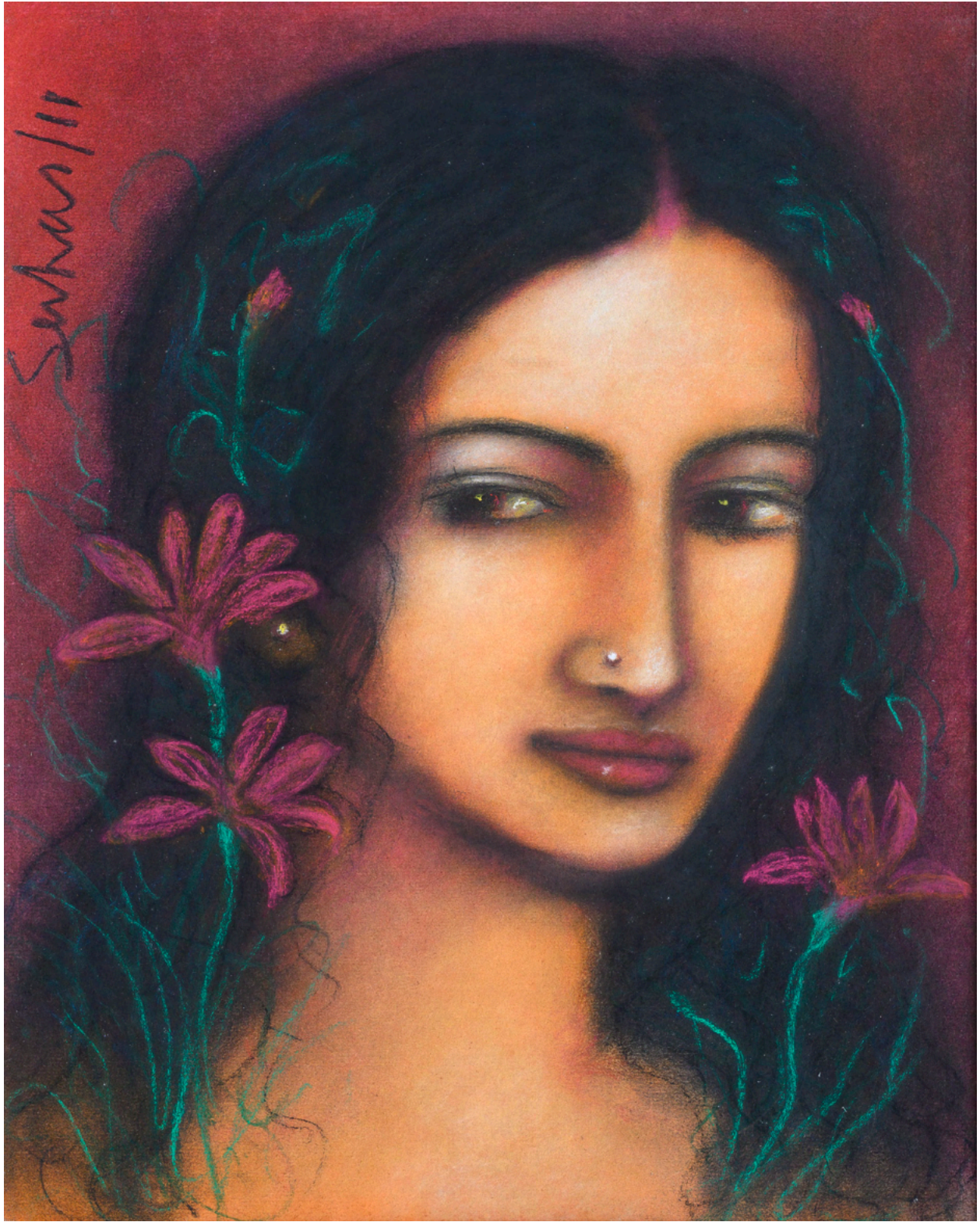


Mixed Media on Paper, 13.5 X 16, 2012

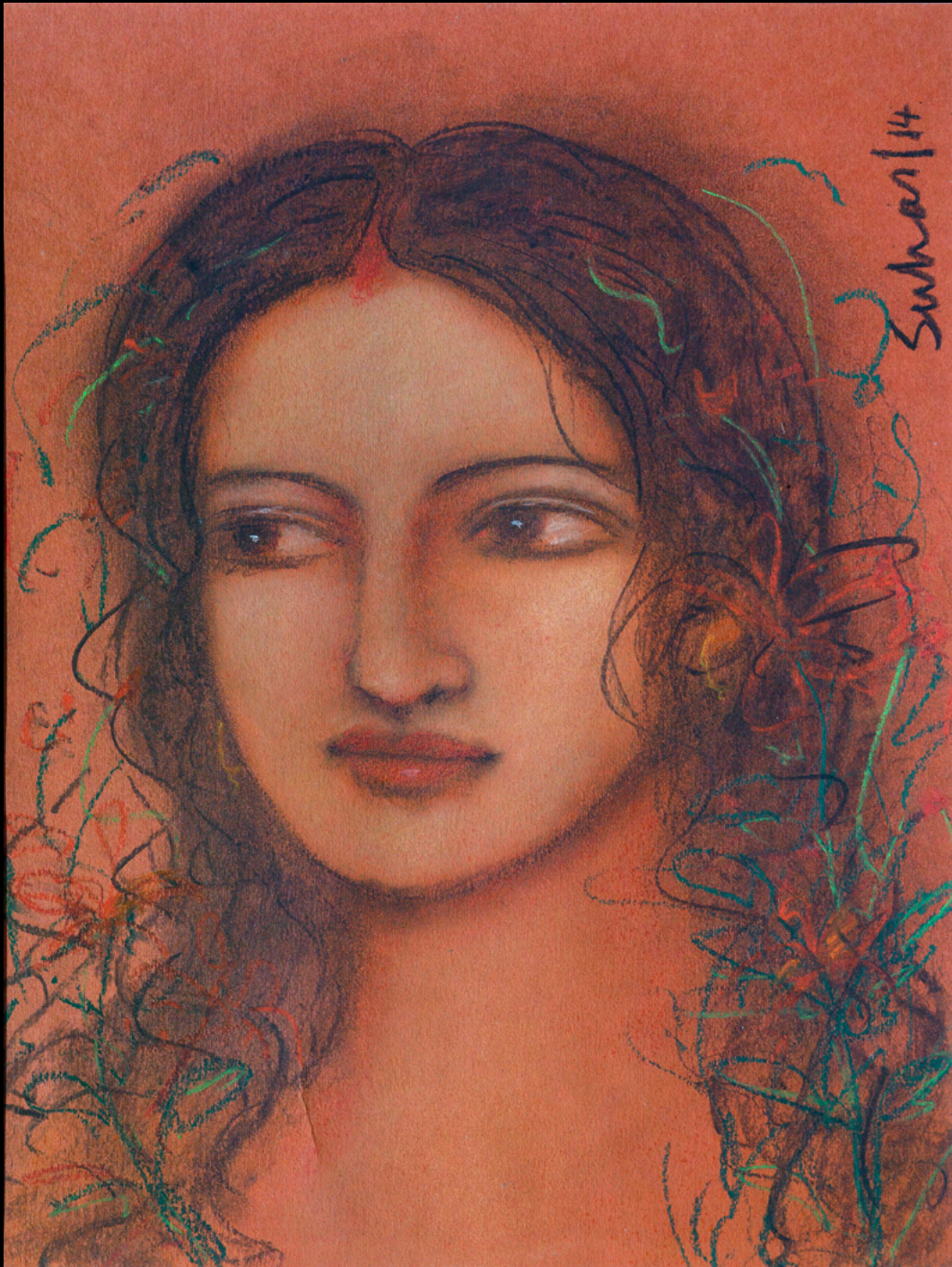


Sankar 12

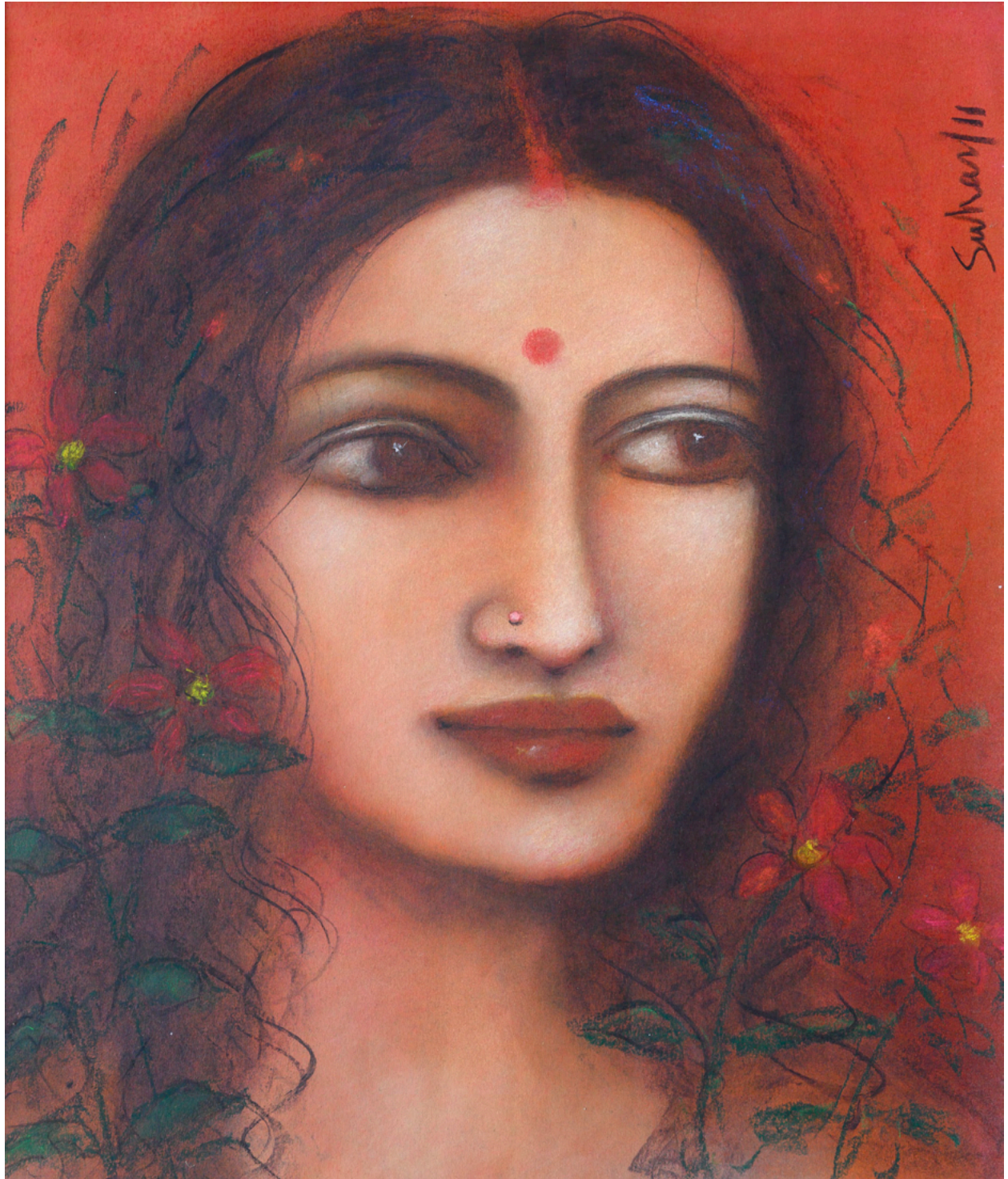
Mixed Media on Paper, 10 x 12, 2012



Mixed Media on Paper, 16 x 20, 2012



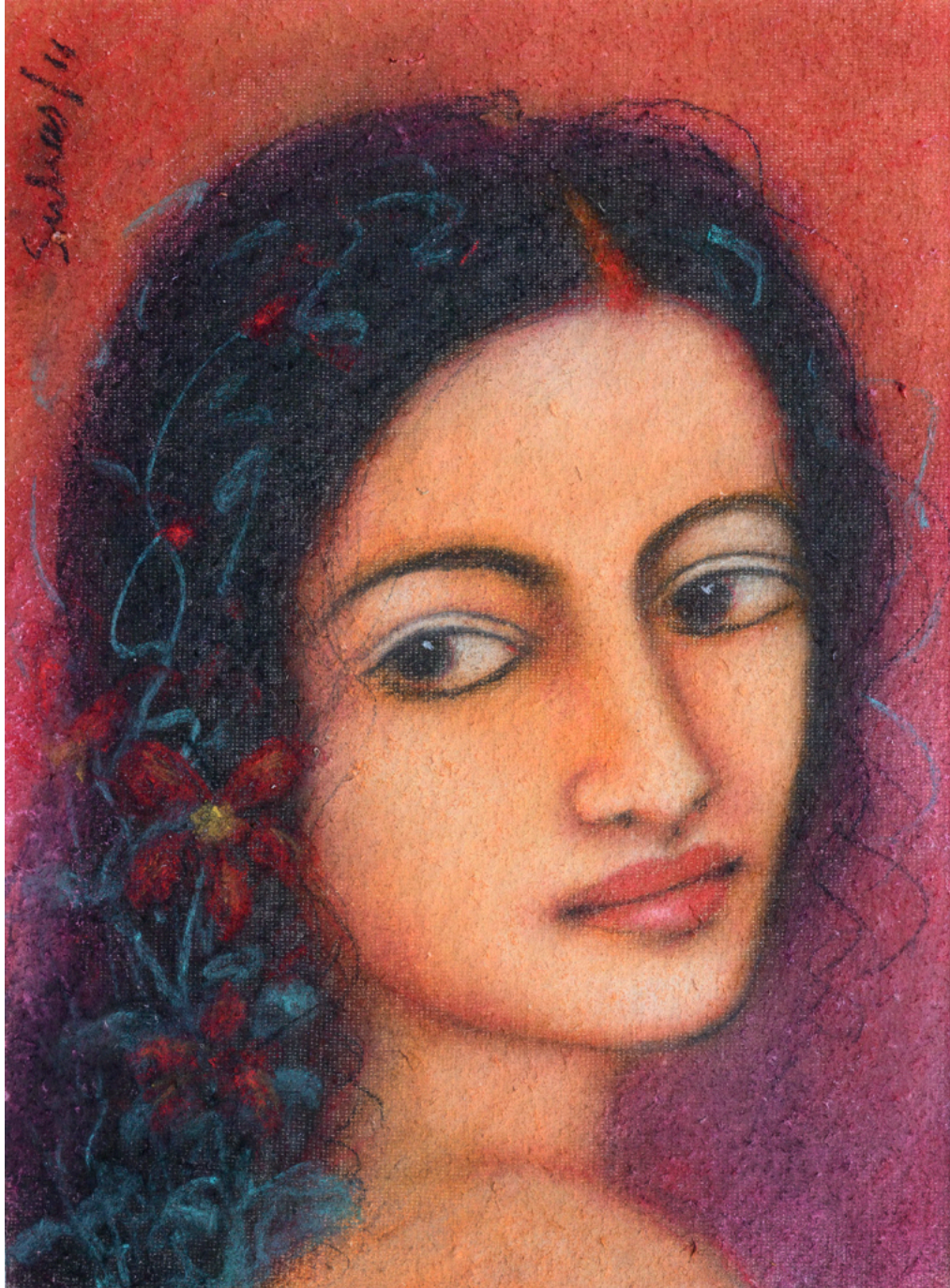
Mixed Media on Paper, 16 x 12, 2014



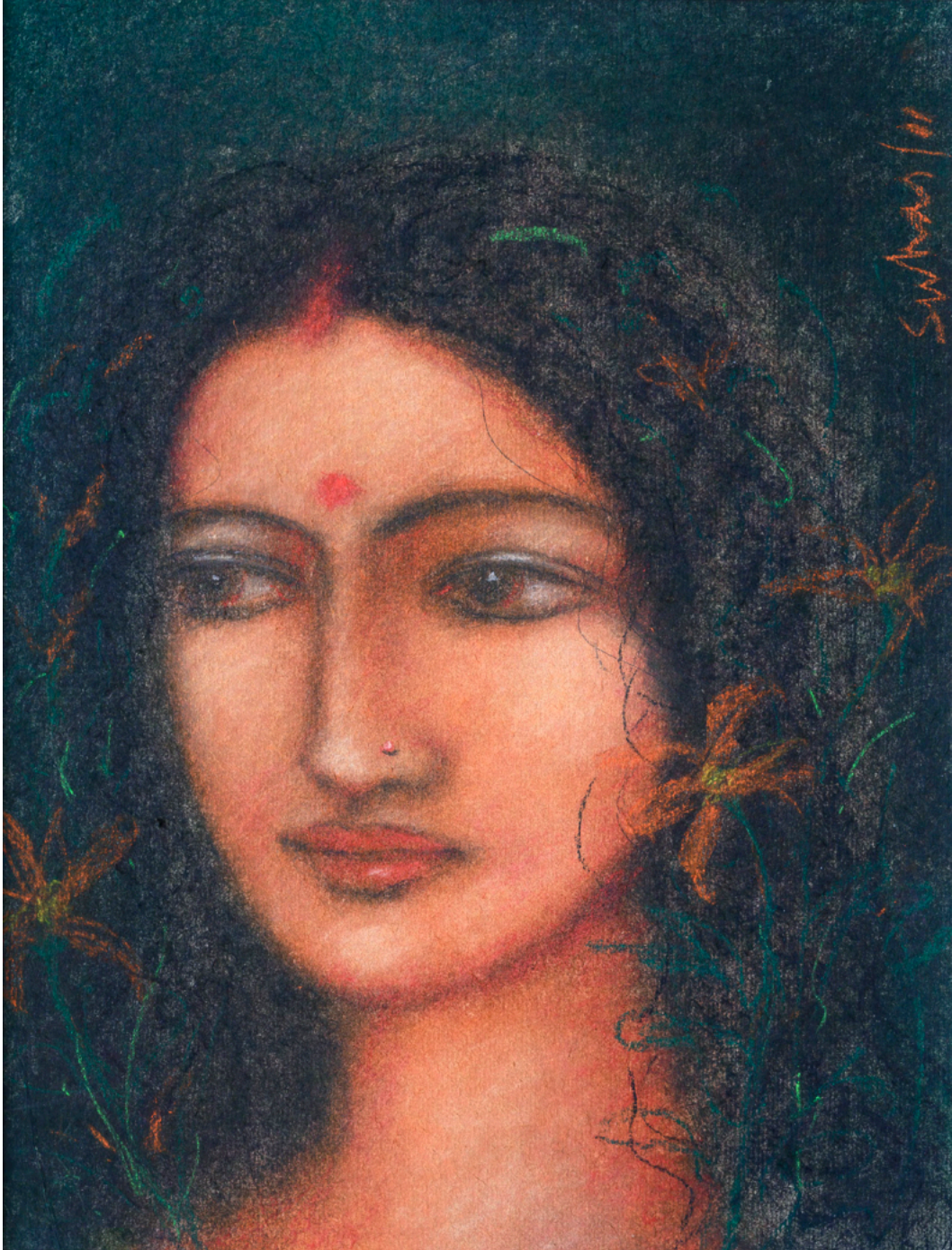
Mixed Media on Paper, 16.6 x 19.6, 2011



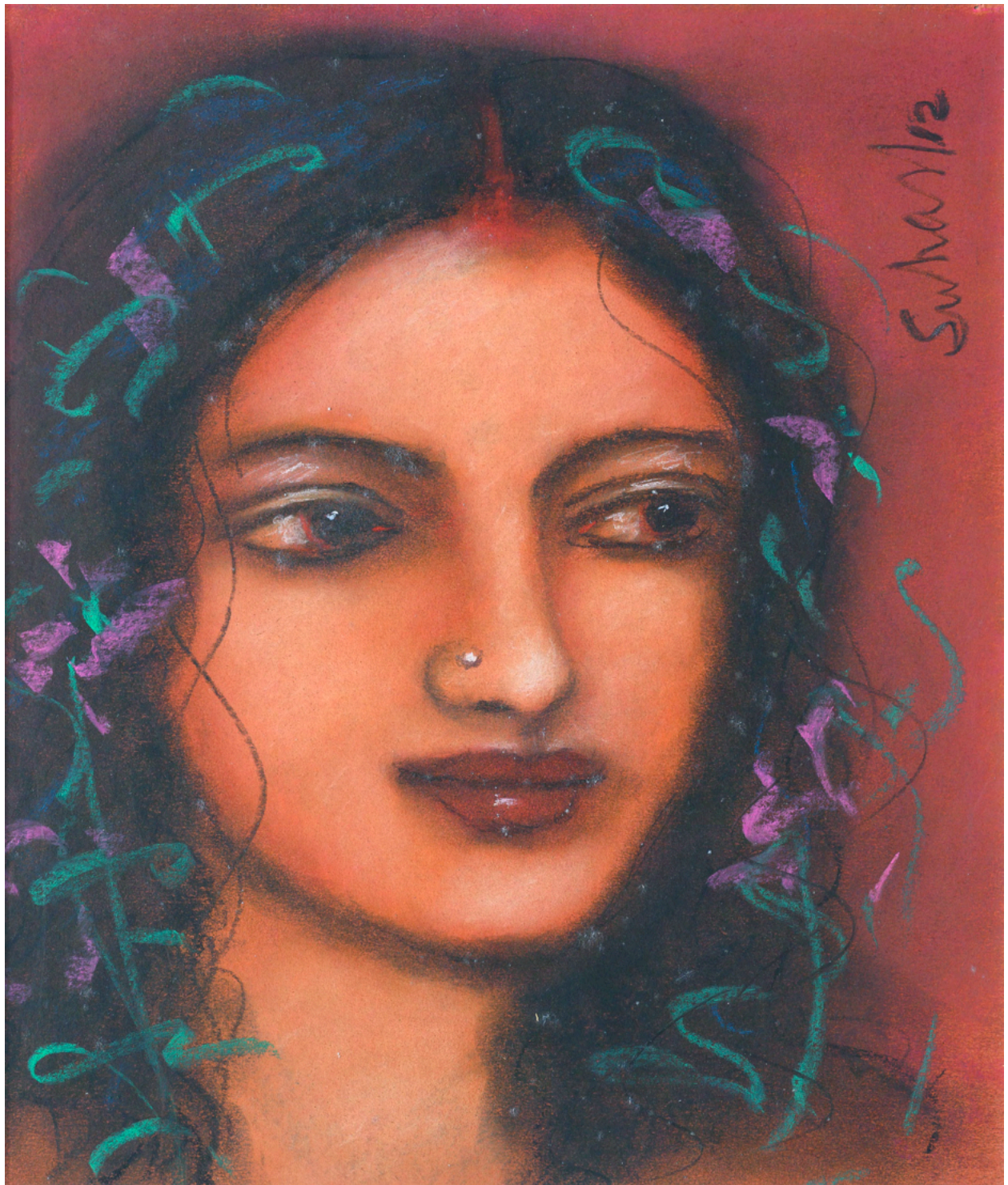
Mixed Media on Paper, 8.75 X 10, 2014



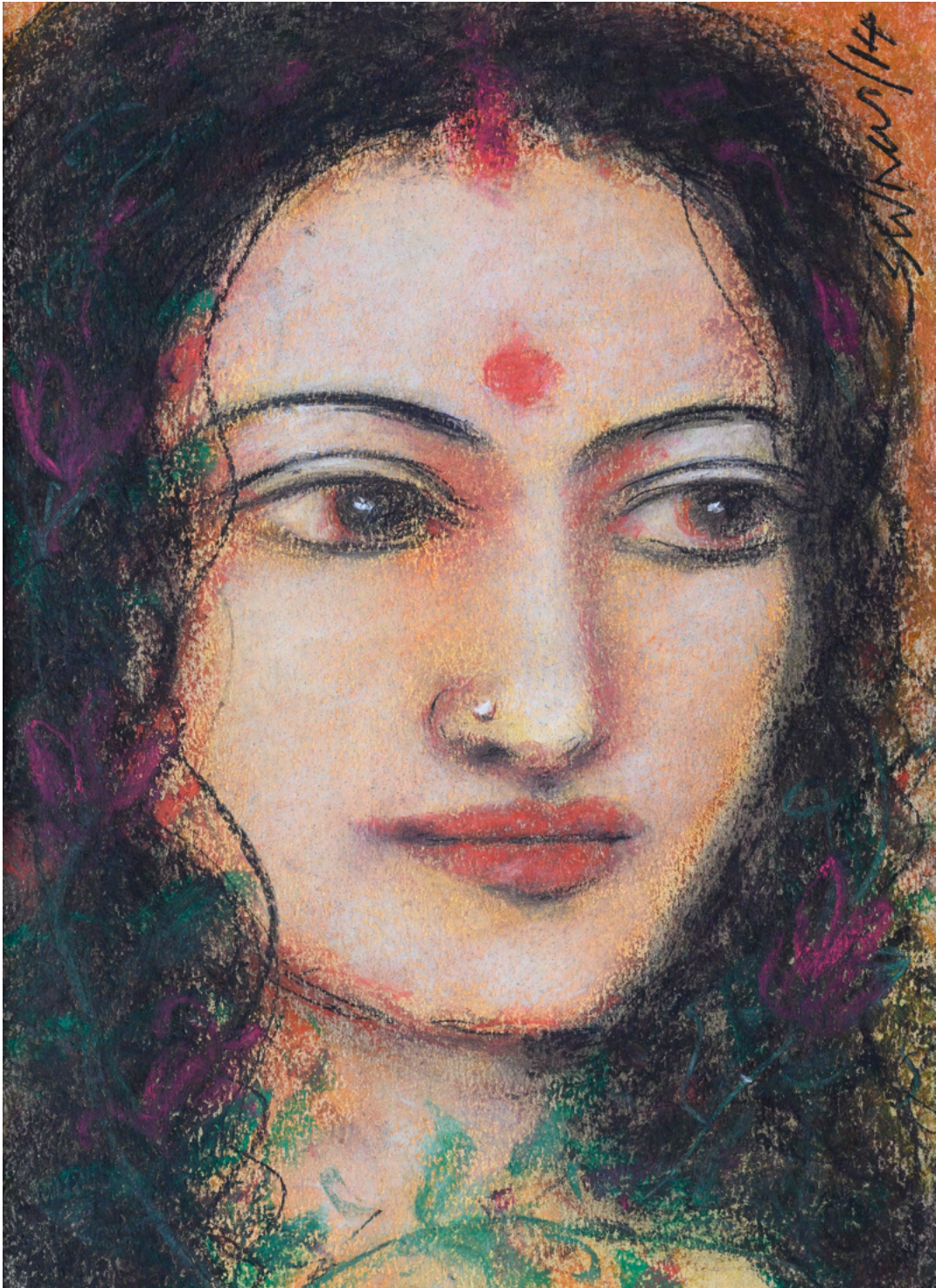
Mixed Media on Paper, 16 x 12, 2011



Mixed Media on Paper, 16 x 12, 2011



Mixed Media on Paper, 10 x 12, 2012



Mixed Media on Paper, 8 X 11.6, 2014



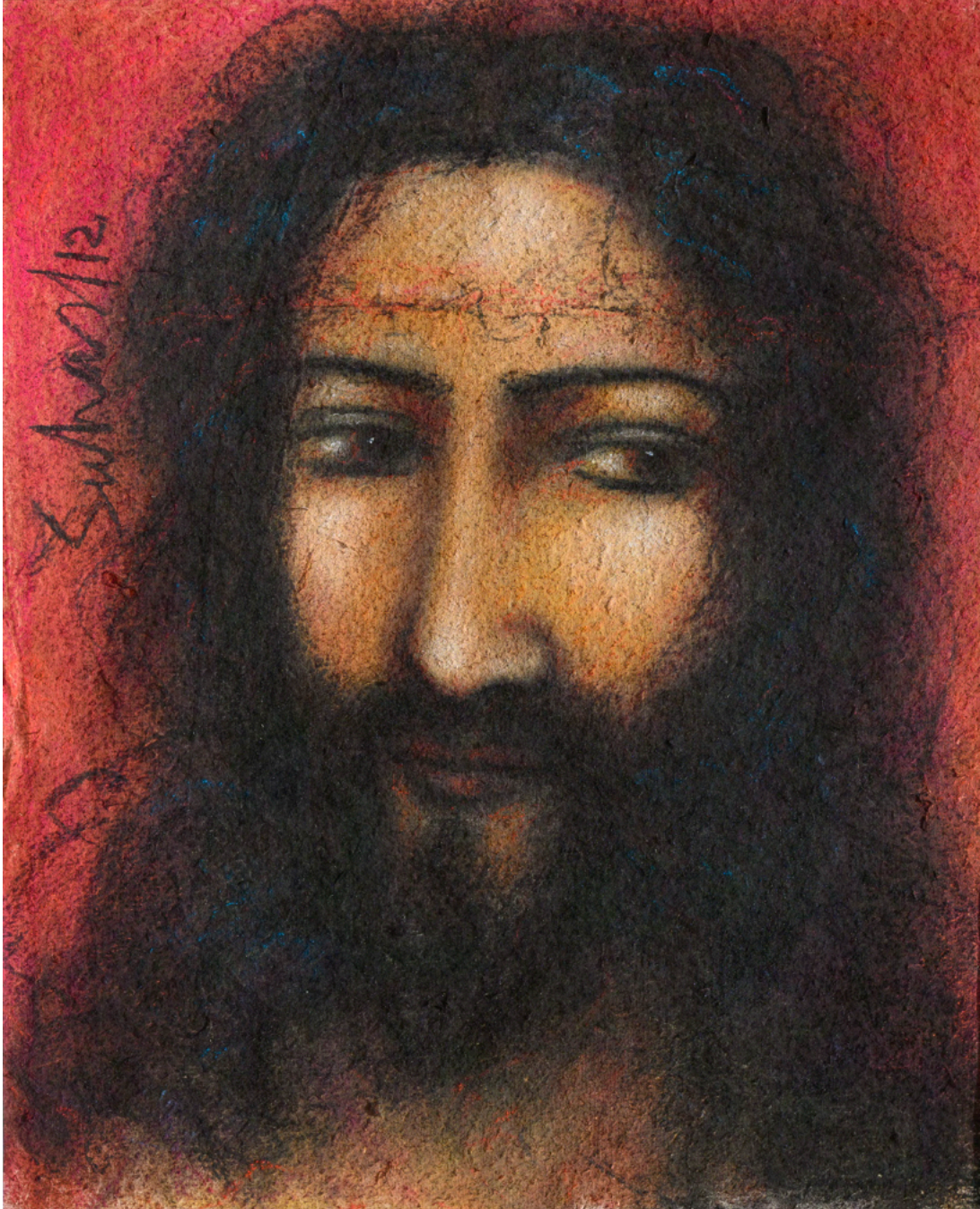
Tempera on Paper, 22 x 16, 2000



County on Paper, 20 x 28, 2011

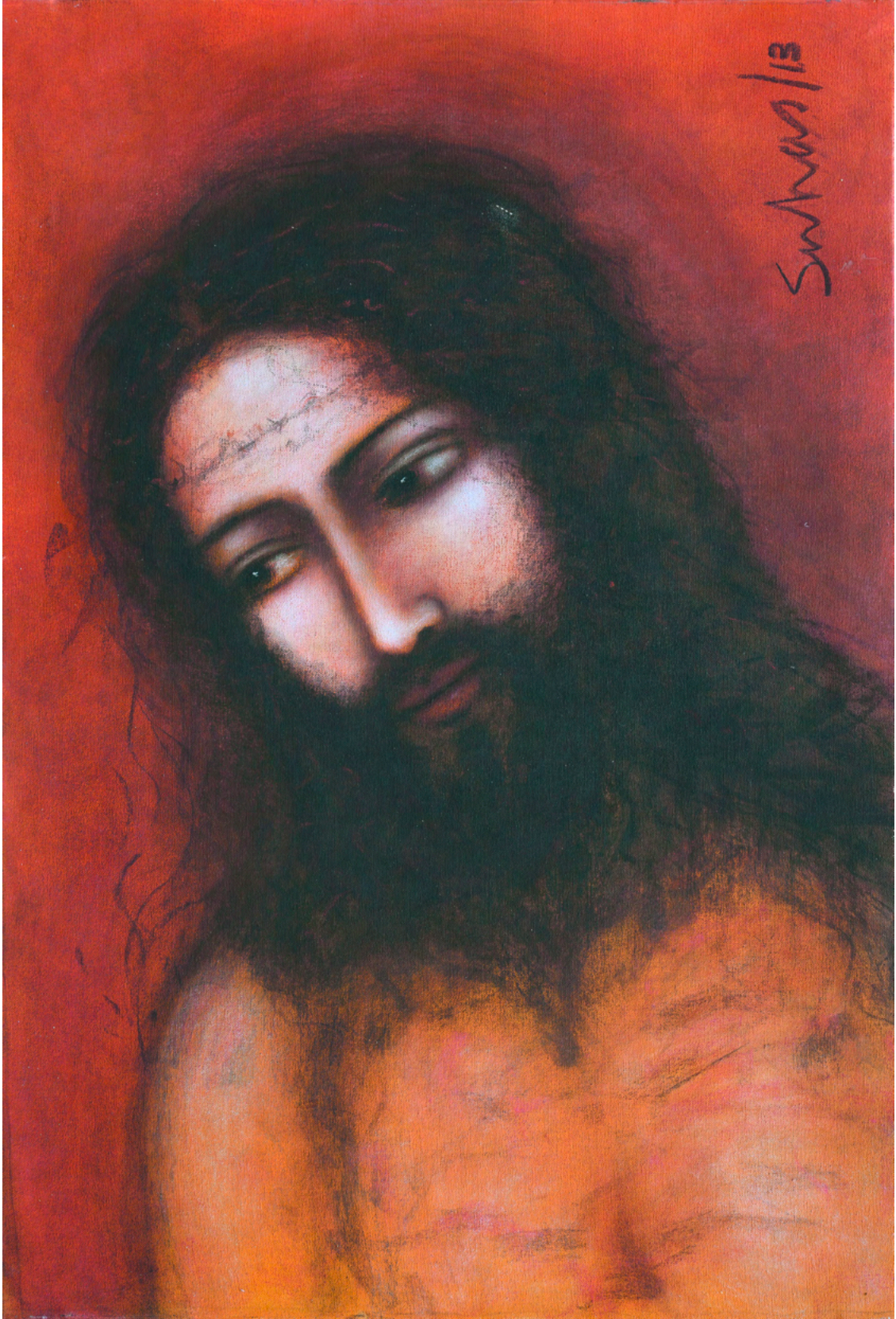


Mixed Media on Paper, 20 x 28, 2011



Mixed Media on Paper, 16 x 20, 2012

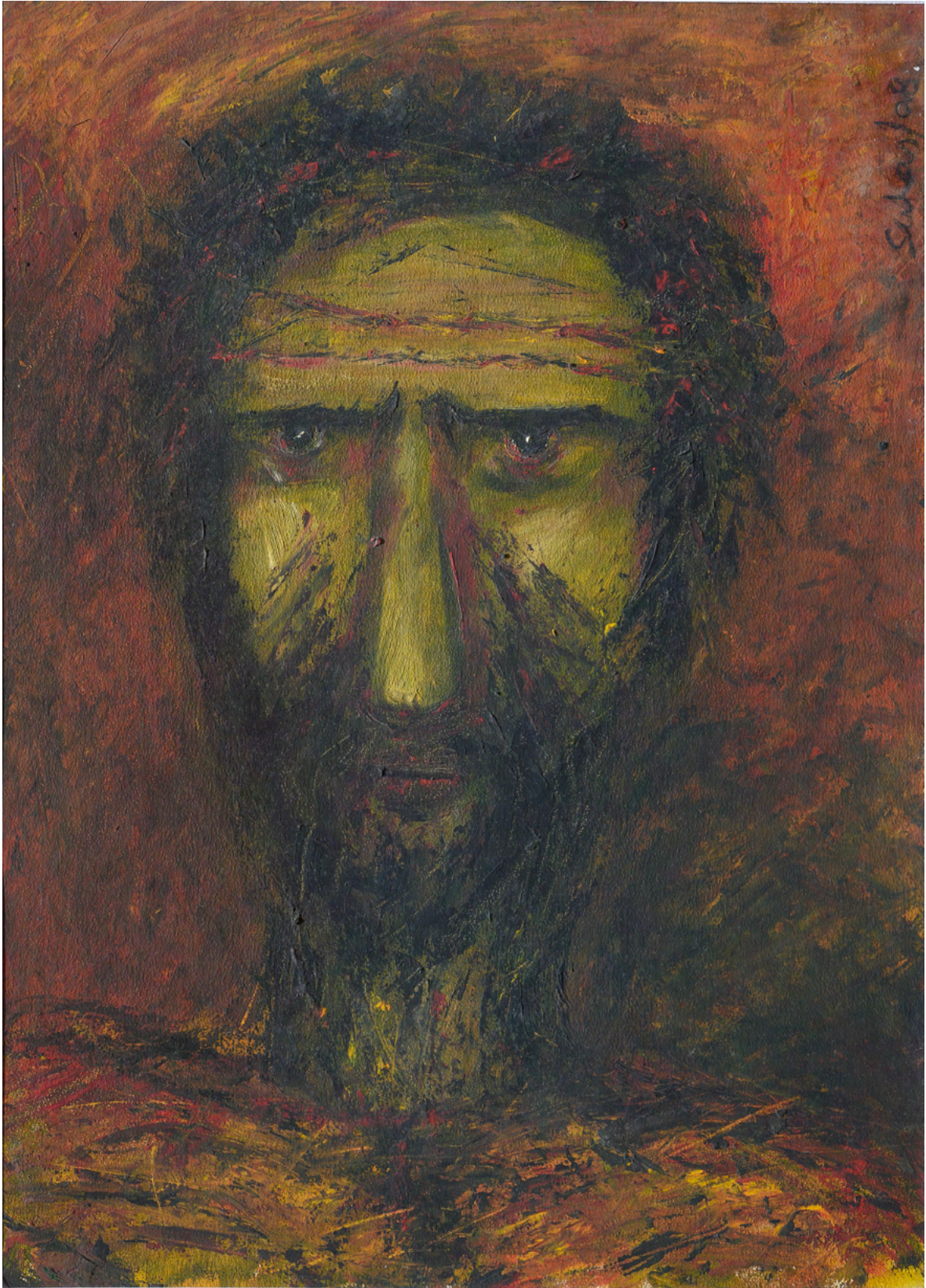




Mixed Media on Canvas, 24x36, 2013

2/10/2012



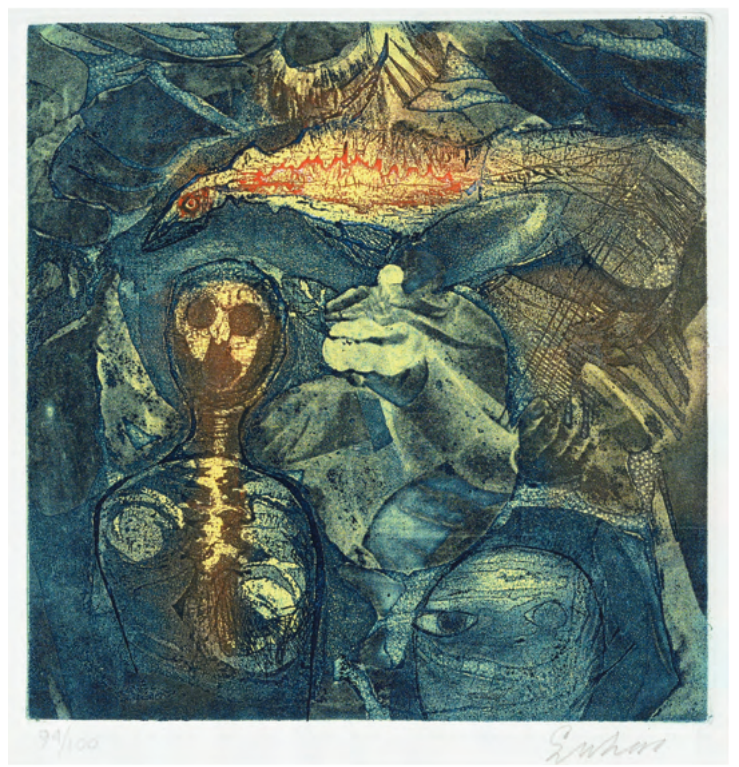


Oil on Canvas Board, 14 x 20, 1998

Mixed Media on Paper, 16 x 20, 2012



GRAPHICS PORTFOLIO















99/100

Enano



60/2c, Indian oil complex, Sri Aurobindo Marg,
Yusuf Sarai, New Delhi, Delhi 110016